



MAFL Funds : Season 2007

Where Statistics Meets Leather and Grass

13 May 2007

Season 2007, Number 7.1

In this Edition of the newsletter:

- Results of wagers and tips for Round 7
- Does Accuracy Matter?
- Alternative Premierships
- The Million Paws Walk

Errata for Newsletter No. 7

- On page 1, the guernseys for Richmond and Hawthorn were swapped. This has been corrected for this Newsletter (though, after their last two performances, Tigers fans and players could probably do with a bit of confusion over what they look like). Thanks to Dan for picking this error up.
- On page 3, the tips for CTL and all MM strategies were provided for a Brisbane v Carlton matchup, which would have been far more interesting had there been such a game this week. The tips should, of course, have been for a Brisbane v Adelaide game. The correct tips are shown in this Newsletter. Apologies to anyone who's been using the MM16 tips; MM16 actually tipped the winners, Adelaide, not Brisbane.

Dees Denied Again

 <p>Kangaroos v Essendon Telstra Dome 11th May, 7:40pm</p> <p>Head-to-Head Kan \$1.82 / Ess \$1.92</p> <p>Line Betting Kangaroos -6.5 pts</p> <p>Heritage Fund Bet WON 1.60% (1.45%)</p> <p>Alpha Fund Bet -</p> <p>Beta Fund Bet -</p> <p>Line Fund Bet LOST 5.00% (5.45%)</p> <hr/> <p>Kangaroos 18.9 (117) <i>def</i> Essendon 13.17 (95)</p> <p>Line Betting Kangaroos by 15.5pts</p>	 <p>Collingwood v Carlton MCG 12th May, 2:10pm</p> <p>Head-to-Head Col \$1.40 / Car \$2.80</p> <p>Line Betting Collingwood -15.5 pts</p> <p>Heritage Fund Bet -</p> <p>Alpha Fund Bet WON 1.00% (0.98%)</p> <p>Beta Fund Bet WON 1.00% (1.06%)</p> <p>Line Fund Bet -</p> <hr/> <p>Collingwood 17.17 (119) <i>def</i> Essendon 14.11 (95)</p> <p>Line Betting Collingwood by 8.5pts</p>	 <p>Port Adelaide v Richmond Football Park 12th May, 2:40pm</p> <p>Head-to-Head PA \$1.10 / Ric \$6.25</p> <p>Line Betting Port Adelaide -39.5 pts</p> <p>Heritage Fund Bet -</p> <p>Alpha Fund Bet -</p> <p>Beta Fund Bet -</p> <p>Line Fund Bet -</p> <hr/> <p>Port Adel 16.19 (115) <i>def</i> Richmond 10.15 (75)</p> <p>Line Betting Port Adelaide by 0.5pt</p>	 <p>Brisbane Lions v Adelaide Gabba 12th May, 7:10pm</p> <p>Head-to-Head Bri \$1.68 / Adel \$2.10</p> <p>Line Betting Brisbane -6.5 pts</p> <p>Heritage Fund Bet -</p> <p>Alpha Fund Bet -</p> <p>Beta Fund Bet -</p> <p>Line Fund Bet -</p> <hr/> <p>Adelaide 14.16 (100) <i>def</i> Brisbane 9.15 (69)</p> <p>Line Betting Adelaide by 37.5pts</p>
 <p>St Kilda v Sydney Telstra Dome 12th May, 7:10pm</p> <p>Head-to-Head StK \$1.83 / Syd \$1.90</p> <p>Line Betting St Kilda +6.5 pts</p> <p>Heritage Fund Bet -</p> <p>Alpha Fund Bet -</p> <p>Beta Fund Bet -</p> <p>Line Fund Bet -</p> <hr/> <p>St Kilda 15.7 (97) <i>def</i> Sydney 11.5 (71)</p> <p>Line Betting St Kilda by 32.5pts</p>	 <p>Geelong v West Coast Kardinia 13th May, 1:10pm</p> <p>Head-to-Head Gee \$1.90 / WC \$1.83</p> <p>Line Betting Geelong -6.5 pts</p> <p>Heritage Fund Bet -</p> <p>Alpha Fund Bet -</p> <p>Beta Fund Bet -</p> <p>Line Fund Bet LOST 5.62% (6.13%)</p> <hr/> <p>Geelong 16.13 (109) <i>def</i> West Coast 10.10 (70)</p> <p>Line Betting Geelong by 32.5pts</p>	 <p>Bulldogs v Melbourne Telstra Dome 13th May, 2:10pm</p> <p>Head-to-Head WB \$1.36 / Mel \$3.00</p> <p>Line Betting Bulldogs -15.5 pts</p> <p>Heritage Fund Bet -</p> <p>Alpha Fund Bet -</p> <p>Beta Fund Bet -</p> <p>Line Fund Bet -</p> <hr/> <p>Bulldogs 16.16 (112) <i>def</i> Melbourne 16.10 (106)</p> <p>Line Betting Melbourne by 9.5pts</p>	 <p>Fremantle v Hawthorn Subiaco 13th May, 2:40pm</p> <p>Head-to-Head Fre \$1.40 / Haw \$2.80</p> <p>Line Betting Fremantle -15.5 pts</p> <p>Heritage Fund Bet -</p> <p>Alpha Fund Bet -</p> <p>Beta Fund Bet -</p> <p>Line Fund Bet -</p> <hr/> <p>Fremantle 14.12 (96) <i>def</i> Hawthorn 11.14 (80)</p> <p>Line Betting Fremantle by 0.5pt</p>

We Win Some, We Lose Some

Somewhere tonight there's a very happy punter who's just taken \$36,000 from Sportsbet as a result of his successful \$40,000 plunge on the Cats at \$1.90 last Monday.

Unfortunately, we don't have grounds for similar levels of elation. For most investors, West Coast's and Essendon's loss on Line betting meant that their portfolios merely marked time this weekend. Here's the detail:

Result of Round 7 Wagers

Heritage Fund				ROI	82.0%
	Bet*	Price	Net Return*		
Kangaroos	1.95%	\$1.82	1.6%		Won by 22 pts
Total	1.95%		1.6%		
Alpha Fund				ROI	40.0%
	Bet*	Price	Net Return*		
Collingwood	2.50%	\$1.40	1.0%		Won by 24 pts
Total	2.50%		1.0%		
Beta Fund				ROI	40.0%
	Bet*	Price	Net Return*		
Collingwood	2.50%	\$1.40	1.0%		Won by 24 pts
Total	2.50%		1.0%		
Line Fund				ROI	(100.0%)
	Bet*	Price	Net Return*		
Essendon	5.00%	\$1.80	(5.0%)		Lost by 15.5 pts
West Coast	5.62%	\$1.82	(5.6%)		Lost by 32.5 pts
Total	10.62%		(10.6%)		

* all bets and net returns are calculated as a percentage of Notional Initial Funds

- Wins on all Head to Head bets and losses on both Line Bets. Net result: near enough to breakeven

The Alpha and Beta Funds' activity and success this weekend is pleasing. If we're to have an even moderately successful year's wagering, both of these Funds have to fire up, make bets and perform.

As well, the Heritage Fund continues to impress. It's return is now up to 12% on the season with an 8 and 10 win-loss record and an 11.4% ROI. That's way ahead of my expectations for this point in the season.

Which leaves only the Line Fund on which to comment. Certainly, I'd hoped for better than a 3 and 6 start to the season, but this was always going to be a volatile Fund and it won't take all that much to swing it back close to profitability.

So, on balance, I think we're doing okay, especially compared with where we were this time last year.

Here's how the profitability of each of the strategies now looks:

Overall Fund Performance

		Heritage	Alpha	Beta	Line	
Fund Return		+11.97%	+3.32%	(-4.43%)	(-18.89%)	
Joined [Swapped]	Strategy	Heritage	Alpha	Beta	Line	Overall Return
(Percentage in each Fund)						
Pre-Season	A*	20%	35%	35%	10%	+0.11%
Pre-Season	B	25%	25%	25%	25%	(-2.01%)
Pre-Season	C	30%	30%	30%	10%	+1.37%
Pre-Season	D	0%	0%	0%	100%	(-18.89%)
Pre-Season	E	20%	30%	30%	20%	(-1.72%)
Round 6	A*	20%	35%	35%	10%	+3.12%
Pre-Season [Round 7]	To C from A	30%	30%	30%	10%	+0.04%

* Recommended portfolio weightings

- Investors with the Recommended Portfolio weightings remain marginally ahead

So, those with the Recommended Portfolio weightings now find themselves 11c richer for every \$100 they've invested, and those who've followed Strategy C since the start of the season are ahead \$1.37 for every \$100 they've invested.

The team-by-team and Fund-by-Fund wagering statistics now look like this:

HERITAGE FUND							ALPHA FUND						
	Bets	Win	Loss	% Outlayed	ROI	% RONF		Bets	Win	Loss	% Outlayed	ROI	% RONF
Adelaide	1	1	0	9.8%	180.0%	17.6%	Adelaide	0	0	0	0.0%	0.0%	0.0%
Brisbane Lions	1	1	0	3.7%	145.0%	5.3%	Brisbane Lions	0	0	0	0.0%	0.0%	0.0%
Carlton	3	1	2	10.9%	42.7%	4.7%	Carlton	0	0	0	0.0%	0.0%	0.0%
Collingwood	1	1	0	5.1%	195.0%	9.9%	Collingwood	1	1	0	2.5%	40.0%	1.0%
Essendon	0	0	0	0.0%	0.0%	0.0%	Essendon	0	0	0	0.0%	0.0%	0.0%
Fremantle	0	0	0	0.0%	0.0%	0.0%	Fremantle	1	1	0	2.7%	86.0%	2.3%
Geelong	0	0	0	0.0%	0.0%	0.0%	Geelong	0	0	0	0.0%	0.0%	0.0%
Hawthorn	3	2	1	17.7%	55.8%	9.9%	Hawthorn	0	0	0	0.0%	0.0%	0.0%
Kangaroos	3	2	1	12.9%	73.7%	9.5%	Kangaroos	0	0	0	0.0%	0.0%	0.0%
Melbourne	3	0	3	20.8%	(100.0%)	(20.8%)	Melbourne	0	0	0	0.0%	0.0%	0.0%
Port Adelaide	0	0	0	0.0%	0.0%	0.0%	Port Adelaide	0	0	0	0.0%	0.0%	0.0%
Richmond	3	0	3	24.0%	(100.0%)	(24.0%)	Richmond	0	0	0	0.0%	0.0%	0.0%
St Kilda	0	0	0	0.0%	0.0%	0.0%	St Kilda	0	0	0	0.0%	0.0%	0.0%
Sydney	0	0	0	0.0%	0.0%	0.0%	Sydney	0	0	0	0.0%	0.0%	0.0%
West Coast	0	0	0	0.0%	0.0%	0.0%	West Coast	0	0	0	0.0%	0.0%	0.0%
Western Bulldogs	0	0	0	0.0%	0.0%	0.0%	Western Bulldogs	0	0	0	0.0%	0.0%	0.0%
Total	18	8	10	104.8%	11.4%	12.0%	Total	2	2	0	5.2%	63.8%	3.3%

BETA FUND							LINE FUND						
	Bets	Win	Loss	% Outlayed	ROI	% RONF		Bets	Win	Loss	% Outlayed	ROI	% RONF
Adelaide	0	0	0	0.0%	0.0%	0.0%	Adelaide	0	0	0	0.0%	0.0%	0.0%
Brisbane Lions	1	1	0	2.0%	80.0%	1.6%	Brisbane Lions	0	0	0	0.0%	0.0%	0.0%
Carlton	0	0	0	0.0%	0.0%	0.0%	Carlton	0	0	0	0.0%	0.0%	0.0%
Collingwood	2	1	1	5.4%	(35.4%)	(1.9%)	Collingwood	1	1	0	7.8%	90.0%	7.0%
Essendon	0	0	0	0.0%	0.0%	0.0%	Essendon	1	0	1	5.0%	(100.0%)	(5.0%)
Fremantle	0	0	0	0.0%	0.0%	0.0%	Fremantle	1	0	1	5.9%	(100.0%)	(5.9%)
Geelong	0	0	0	0.0%	0.0%	0.0%	Geelong	0	0	0	0.0%	0.0%	0.0%
Hawthorn	0	0	0	0.0%	0.0%	0.0%	Hawthorn	2	1	1	15.6%	(5.1%)	(0.8%)
Kangaroos	0	0	0	0.0%	0.0%	0.0%	Kangaroos	1	1	0	7.8%	90.0%	7.0%
Melbourne	1	0	1	4.1%	(100.0%)	(4.1%)	Melbourne	1	0	1	7.8%	(100.0%)	(7.8%)
Port Adelaide	0	0	0	0.0%	0.0%	0.0%	Port Adelaide	0	0	0	0.0%	0.0%	0.0%
Richmond	0	0	0	0.0%	0.0%	0.0%	Richmond	0	0	0	0.0%	0.0%	0.0%
St Kilda	0	0	0	0.0%	0.0%	0.0%	St Kilda	1	0	1	7.8%	(100.0%)	(7.8%)
Sydney	0	0	0	0.0%	0.0%	0.0%	Sydney	0	0	0	0.0%	0.0%	0.0%
West Coast	0	0	0	0.0%	0.0%	0.0%	West Coast	1	0	1	11.2%	(100.0%)	(11.2%)
Western Bulldogs	0	0	0	0.0%	0.0%	0.0%	Western Bulldogs	0	0	0	0.0%	0.0%	0.0%
Total	4	2	2	11.5%	(38.5%)	(4.4%)	Total	9	3	6	68.9%	(27.4%)	(18.9%)

Close, but Favourites Mostly Prevail

- Chi bags 6, but MM16 bags 7

A good weekend for favourites, with six out of eight winning, moving the season's tally to 36 from 56 (64%), which is roughly the average over recent seasons.

Chi managed six correct tips too, but this wasn't enough to close the gap on MM16. In fact, with the corrected Brisbane v Adelaide tip (see errata in the margin on page 1), MM16 tipped 7 from 8 – the best result of all our tipsters – to move it 5 tips clear of Chi and 2 tips clear of BKB.

Here's the detail:

Tips from all the Tipping Models (see Appendix for each Model's strategy)

Tipping	Kan v Ess	Col v Car	PA v Ric	Bri v Ade	StK v Syd	Gee v WC	WB v Mel	Fre v Haw
CTM	Kan by 9	Col by 22	PA by 11	Bri by 9	StK by 10	WC by 7	WB by 11	Fre by 11
QTM	Kan by 4	Col by 22	PA by 17	Bri by 10	StK by 12	WC by 10	WB by 9	Haw by 1
BKB	Kan by 6.5	Col by 15.5	PA by 39.5	Bri by 6.5	Syd by 6.5	Gee by 6.5	WB by 15.5	Fre by 15.5
CTL	Essendon	Collingwood	Port Adelaide	Brisbane	Sydney	West Coast	Western Bulldogs	Hawthorn
MM2	Kangaroos	Collingwood	Port Adelaide	Brisbane	Sydney	West Coast	Western Bulldogs	Hawthorn
MM4	Kangaroos	Collingwood	Port Adelaide	Adelaide	Sydney	West Coast	Western Bulldogs	Hawthorn
MM6	Essendon	Collingwood	Port Adelaide	Brisbane	Sydney	West Coast	Western Bulldogs	Hawthorn
MM8	Essendon	Collingwood	Port Adelaide	Adelaide	Sydney	West Coast	Western Bulldogs	Hawthorn
MM11	Essendon	Collingwood	Port Adelaide	Adelaide	Sydney	West Coast	Western Bulldogs	Hawthorn
MM16	Kangaroos	Collingwood	Port Adelaide	Adelaide	St Kilda	West Coast	Western Bulldogs	Fremantle
MM22	Kangaroos	Collingwood	Port Adelaide	Adelaide	Sydney	West Coast	Western Bulldogs	Fremantle
NIT	Kangaroos (7-4)	Collingwood (11-0)	Port Adelaide (11-0)	Brisbane Lions (8-5)	Sydney (8-3)	West Coast (10-1)	Western Bulldogs (11-0)	Hawthorn (7-4)

Line Betting	Chi	Kangaroos	Collingwood	Richmond	Brisbane	St Kilda	West Coast	Melbourne	Hawthorn
Quila	Essendon	Collingwood	Richmond	Brisbane	St Kilda	West Coast	Melbourne	Hawthorn	

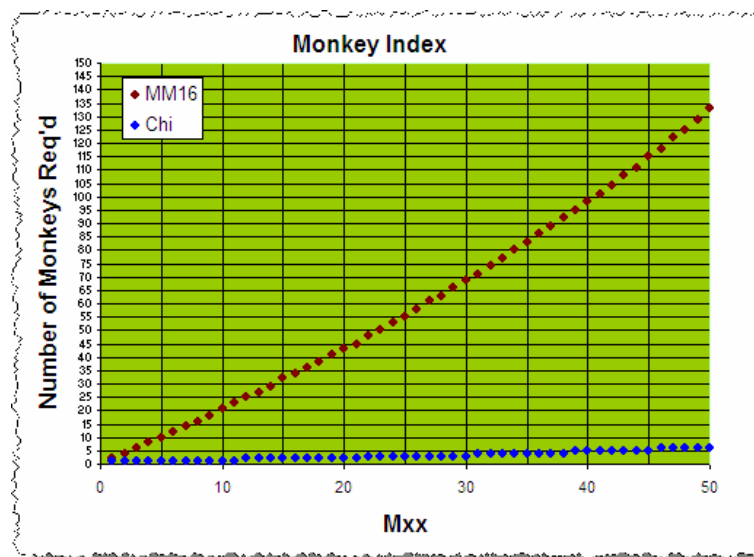
Here's the summary performance of each strategy so far this season:

Cumulative Tipping Results at the end of Round 7

	Cum	% Correct	Av Pred Err
MM16	38	67.9%	-
BKB	36	64.3%	27.3
CTM	33	58.9%	27.4
MM4	33	58.9%	-
MM22	33	58.9%	-
MM8	32	57.1%	-
MM6	30	53.6%	-
NIT	30	53.6%	-
QTM	29	51.8%	28.6
MM11	29	51.8%	-
CTL	27	48.2%	-
MM2	25	44.6%	-

Perhaps the most remarkable aspect of this table is that it shows that only 27 of 56 winners have been higher up on the ladder than their opponents. (And, only 15 of the last 32 winners have been higher up on the ladder.)

On the Monkey front, the MM16 and Chi results mean this:



So, you'd need 43 monkeys tipping at random to expect to have matched or bettered MM16's performance of 38 from 56 at least 20% of the time. (You'd need just 2 to expect to have matched or bettered Chi's 33 from 56 with the same probability).

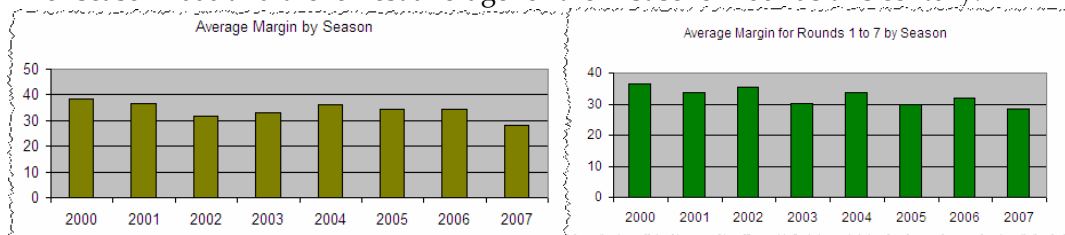
For those contemplating a wager or two in the coming weeks, MM16 recorded its seventh straight profitable weekend on level-staking:

MM16 - Level Staking Performance				
	Wins	Return	Cum Ret	Cum ROI
Round 1	5	\$1.64	\$1.64	20.5%
Round 2	5	\$0.14	\$1.78	11.1%
Round 3	6	\$2.00	\$3.78	15.8%
Round 4	6	\$0.98	\$4.76	14.9%
Round 5	4	\$0.68	\$5.44	13.6%
Round 6	5	\$0.62	\$6.06	12.6%
Round 7	7	\$3.01	\$9.07	16.2%

In fact, this weekend was the most profitable weekend for MM16 so far this season, with its 7 correct tips returning \$3.01 for an \$8.00 investment.

- The closest season this century?

The average margin of victory this weekend was just 25½ points, the third lowest of the season. (Port Adelaide's 40 point victory over the Tigers was the largest). This moved the season average to just 28.3, some 6 points lower than the average for season 2006 and the lowest average for the first seven rounds this century.



This season's most common margin of victory has been 16 points, which has occurred in 6 of the 56 games. Next most common has been 31 points, which has, amazingly, been the margin on 5 occasions, despite being the victory margin in only about 1.6% of all games this century prior to the start of this season.

Accuracy Isn't All That Important

Following the progress of Collingwood in their game against Carlton on Saturday, I saw the Pies trailing by 17 points at the half despite registering 15 scoring shots (4.11) to 14 (8.6), and this got me to wondering about the relative accuracy of the teams in front of goal.

In pure terms, accuracy should be measured by goals as a proportion of goals plus non-rushed behinds. But I can't find a source of rushed behinds, so allow me to be a little loose and define accuracy as goals divided by goals plus behinds. With that definition, here's what we get:

Team	GF	BF	PF	Acc %	Rank	GA	BA	PA	%	Pts	1	2	3	4	5	6	7
Port Adelaide	96	101	677	48.7%	12	78	83	551	122.9	24	✓	✓	L	✓	✓	✓	✓
West Coast	85	98	608	46.4%	14	72	72	504	120.6	24	✓	✓	✓	✓	✓	✓	L
Collingwood	89	104	638	46.1%	15	81	90	576	110.8	20	✓	L	✓	L	✓	✓	✓
Geelong	127	107	869	54.3%	4	84	79	583	149.1	16	L	✓	✓	L	L	✓	✓
Adelaide	79	77	551	50.6%	9	67	95	497	110.9	16	L	✓	✓	✓	L	L	✓
Brisbane Lions	89	94	628	48.6%	13	80	96	576	109.0	16	✓	✓	L	L	✓	✓	L
Kangaroos	99	92	686	51.8%	5	92	98	650	105.5	16	L	L	L	✓	✓	✓	✓
Hawthorn	90	91	631	49.7%	10	87	85	607	104.0	16	L	✓	✓	✓	L	✓	L
St Kilda	86	82	598	51.2%	8	84	74	578	103.5	16	✓	L	✓	L	L	✓	✓
Western Bulldogs	98	79	667	55.4%	3	99	101	695	96.0	16	✓	L	L	✓	✓	✓	✓
Sydney	83	78	576	51.6%	6	80	64	544	105.9	12	L	✓	✓	✓	L	✓	L
Essendon	106	82	718	56.4%	1	104	98	722	99.4	12	✓	✓	L	✓	✓	L	L
Fremantle	96	77	653	55.5%	2	101	87	693	94.2	12	L	L	L	✓	✓	L	✓
Carlton	92	112	664	45.1%	16	127	106	868	76.5	8	✓	L	✓	✓	L	L	L
Melbourne	77	80	542	49.0%	11	109	98	752	72.1	0	L	L	L	L	L	L	L
Richmond	83	78	576	51.6%	6	130	106	886	65.0	0	L	L	L	L	L	L	L

What I find utterly amazing about this table is that 4 of the top 6 teams on the ladder are ranked 12th, 13th, 14th and 15th in terms of accuracy (refer to the sixth column in the table above, headed "Acc %"). This year, it seems, it's not so much about being accurate as it is about preventing your opponents from having scoring opportunities and creating plenty of your own (almost regardless of what you do with them).

The evidence for this is as follows:

- The top 5 teams on the ladder fill 5 of the top 7 places in terms of fewest scoring shots allowed.
- The top 7 teams on the ladder fill 4 of the top 5 places in terms of total scoring shots (though, curiously, the 2nd best team on this measure, Carlton, are 3rd last).

And I thought this was such a simple game.

- Winning's about stopping scoring shots and creating plenty of your own

The Alternative Premierships

This weekend the Roos maintained their impressive record of having never lost a 1st quarter. Meantime, the Dees preserved their extraordinary record of not having led a game at any change other than the first. Only Richmond come anywhere near matching the Dees on this front, and even then all they can manage is to have been similarly unsuccessful in leading at the fourth blast of the siren.

End of 1st Quarter Premiership			End of 2nd Quarter Premiership			End of 3rd Quarter Premiership			End of 4th Quarter Premiership		
Team	Pts	%	Team	Pts	%	Team	Pts	%	Team	Pts	%
Kangaroos	28	181.3	Kangaroos	24	132.1	West Coast	24	116.2	Port Adelaide	24	122.9
Geelong	24	174.5	Geelong	20	146.8	Geelong	20	160.5	West Coast	24	120.6
Essendon	20	156.6	West Coast	20	133.9	Port Adelaide	20	132.9	Collingwood	20	110.8
Adelaide	20	116.4	Adelaide	20	132.1	Kangaroos	20	120.0	Geelong	16	149.1
West Coast	16	124.1	Essendon	18	115.4	Collingwood	18	101.7	Adelaide	16	110.9
St Kilda	16	114.3	Western Bulldogs	16	110.4	Adelaide	16	115.8	Brisbane Lions	16	109.0
Brisbane Lions	16	93.9	Port Adelaide	16	109.2	Brisbane Lions	16	114.8	Kangaroos	16	105.5
Port Adelaide	12	95.5	St Kilda	16	101.9	Western Bulldogs	16	100.2	Hawthorn	16	104.0
Sydney	12	91.8	Collingwood	14	87.1	St Kilda	16	99.8	St Kilda	16	103.5
Melbourne	12	78.9	Brisbane Lions	12	113.4	Hawthorn	12	100.0	Western Bulldogs	16	96.0
Collingwood	12	75.2	Sydney	12	83.2	Fremantle	12	98.1	Sydney	12	105.9
Fremantle	8	88.1	Fremantle	10	104.3	Essendon	12	97.3	Essendon	12	99.4
Western Bulldogs	8	86.8	Hawthorn	10	89.5	Sydney	8	86.9	Fremantle	12	94.2
Carlton	8	72.9	Carlton	8	78.2	Carlton	8	80.4	Carlton	8	76.5
Richmond	8	70.2	Richmond	8	61.0	Richmond	6	63.9	Melbourne	0	72.1
Hawthorn	4	68.2	Melbourne	0	61.2	Melbourne	0	63.9	Richmond	0	65.0

Mercifully, no team has now failed to win at least one quarter in one of their games. The Roos, as we've mentioned are king of the first quarter. The Bulldogs reign in the 2nd quarter, Port Adelaide and Geelong in the 3rd, whilst West Coast prevails in the Money Quarter, the 4th. Perhaps most surprising is the relatively poor showing of the now-competition leader, Port, in the 1st, 2nd and, especially, 4th quarters.

Maybe I should be calling the 3rd quarter the Money Quarter.

During 1st Quarter Premiership			During 2nd Quarter Premiership			During 3rd Quarter Premiership			During 4th Quarter Premiership		
Team	Pts	%	Team	Pts	%	Team	Pts	%	Team	Pts	%
Kangaroos	28	181.3	Western Bulldogs	22	150.4	Port Adelaide	24	196.5	West Coast	22	134.7
Geelong	24	174.5	Adelaide	20	153.1	Geelong	24	194.2	Sydney	20	208.2
Essendon	20	156.6	Brisbane Lions	20	139.6	Brisbane Lions	20	118.4	Collingwood	20	148.2
Adelaide	20	116.4	Fremantle	20	127.0	Collingwood	16	136.0	Hawthorn	20	117.5
West Coast	16	124.1	St Kilda	18	89.6	Fremantle	16	89.5	Melbourne	20	107.0
St Kilda	16	114.3	West Coast	16	147.6	Kangaroos	14	100.0	Geelong	18	119.6
Brisbane Lions	16	93.9	Geelong	16	123.5	West Coast	14	83.7	St Kilda	16	115.6
Port Adelaide	12	95.5	Port Adelaide	14	123.5	Hawthorn	12	119.5	Essendon	16	106.3
Sydney	12	91.8	Collingwood	14	99.4	St Kilda	12	96.6	Adelaide	16	94.9
Melbourne	12	78.9	Hawthorn	12	109.5	Carlton	12	84.7	Brisbane Lions	12	92.6
Collingwood	12	75.2	Kangaroos	12	96.8	Essendon	12	72.1	Port Adelaide	10	90.8
Fremantle	8	88.1	Richmond	12	51.2	Melbourne	12	69.8	Fremantle	10	82.5
Western Bulldogs	8	86.8	Essendon	8	89.8	Sydney	10	94.6	Western Bulldogs	8	84.5
Carlton	8	72.9	Carlton	8	83.8	Richmond	10	69.7	Kangaroos	8	77.3
Richmond	8	70.2	Sydney	8	72.7	Adelaide	8	92.3	Richmond	4	68.3
Hawthorn	4	68.2	Melbourne	4	46.3	Western Bulldogs	8	80.1	Carlton	4	64.7

It's interesting to note that, amongst the teams in the current Final 8, only Sydney has not done well in the 3rd quarter and, conversely, only Fremantle has done well in the 3rd quarter, but not so well in terms of the season proper.

The Million Paws Walk

It probably won't surprise you to hear that one of the charities that Debs and I support is the RSPCA. Dogs and cats have been a part of my life for as long as I can remember, and our first 'family' dog and cat after we were married both came from the RSPCA out at Yagoona. We think that what the RSPCA does is worth supporting.

In line with this, each year for the past five or so, one or both of us have participated in the Million Paws Walk, which is a pet-accompanied walk established to raise money for the RSPCA in Sydney. Next weekend, Debs, Chi, Quila and I will be doing the walk (though I've a nagging feeling that I'll be carrying Chi for a substantial part of it).

If anyone reading this newsletter would like to sponsor either or both of the Tipping Terrier (Quila) or the Clairvoyant Chihuahua (Chi), please send me an e-mail and I'll give you the details. Alternatively, please take a look at the RSPCA website and make up your own mind.



Hmm ... Sydney's usually strong at home, but Port's playing really well ...

'til Thursday

Tony

13 May 2007

Appendix

Tipping Model Strategies

Strategy Name	Basis for Tips
Chi Tipping Model (CTM)	Complex statistical model incorporating a range of factors.
Quila Tipping Model (QTM)	Uses an approach similar to that used for the CTM.
Bookies Know Best (BKB)	For each game, tips the TAB Sportsbet favourite. In the case of equal favourites, it tips the true home team or, if there's no true home team, tips the team with the higher ladder position (ties are broken using percentage then for-and-against margin).
Consult The Ladder (CTL)	Tips the team with the higher ladder position (ties are broken using percentage then for-and-against margin). For the first round of the season, use the ladder position at the end of the previous regular season.
Momentum Matters (MMx)	<p>A series of strategies that involve building competition ladders based only on the results of the most recent x rounds of regular season games (drawing on games from the previous season if required).</p> <p>The MM2 strategy considers only the last 2 regular season rounds, the MM4 strategy only the last 4 rounds, and so on. Once a ladder has been built for a strategy, the selected team is that with the superior ladder position (as per CTL above).</p> <p>This year we'll track the performance of MM2, MM4, MM6, MM8, MM11, MM16 and MM22.</p>
No Independent Thought (NIT)	Tips the team that is most popular amongst all other strategies.

Notional Initial Funds

For reasons that are somewhat technical (I'm happy to provide details to anyone who's interested but, broadly, it allows me to describe bets in terms of a common percentage for all Investors and still maintain the same share price for all Investors), I need to calculate what I call "Notional Initial Funds". It's calculated separately for each Fund.

For original Investors, the definition is straightforward:

$$\text{Notional Initial Funds} = \text{Actual Funds Invested}$$

For Investors who join the Fund post Round 1:

$$\text{Notional Initial Funds} = \text{Actual Funds Invested} / \text{Share Price at the time of investing}$$

(in other words, it's the notional amount that would need to have been invested at the start of the season in order to have returned an amount equal to the amount actually invested).

13 May 2007