



MAFL Funds : Season 2007

Where Statistics Meets Leather and Grass

02 September 2007

Season 2007, Number 22.1

In this Edition of the newsletter:

- Results of wagers and tips for Round 22
- Final Monkey Update
- Final Chiras Rankings
- Final Alternative Premiership Ladders

Swans' Win The Only Upset

 <p>Collingwood v Adelaide Telstra Dome 31st August, 7:40pm</p> <p>Head-to-Head Col \$2.00 / Ade \$1.75 (Adelaide 50-57%)</p> <p>Line Betting Collingwood +6½ pts</p> <p>Heritage Fund Bet -</p> <p>Alpha Fund Bet -</p> <p>Beta Fund Bet -</p> <p>Line Fund Bet -</p> <p>Adelaide 14.10 (94) <i>def.</i></p> <p>Collingwood 11.9 (75)</p> <p>Line Betting Adelaide by 12½ pts</p>	 <p>Richmond v St Kilda MCG 1st September, 2:10pm</p> <p>Head-to-Head Ric \$3.00 / StK \$1.35 (St Kilda 67-74%)</p> <p>Line Betting Richmond +15½ pts</p> <p>Heritage Fund Bet LOST 11.24% (7.08%)</p> <p>Alpha Fund Bet LOST 5.00% (4.40%)</p> <p>Beta Fund Bet -</p> <p>Line Fund Bet WON 7.00% (7.73%)</p> <p>St Kilda 14.18 (102) <i>def.</i></p> <p>Richmond 13.14 (92)</p> <p>Line Betting Richmond by 5½ pts</p>	 <p>West Coast v Essendon Subiaco 1st September, 2:10pm</p> <p>Head-to-Head WC \$1.09 / Ess \$6.50 (West Coast 85-92%)</p> <p>Line Betting West Coast -41½ pts</p> <p>Heritage Fund Bet -</p> <p>Alpha Fund Bet -</p> <p>Beta Fund Bet -</p> <p>Line Fund Bet WON 7.00% (7.73%)</p> <p>West Coast 21.6 (132) <i>def.</i></p> <p>Essendon 19.10 (124)</p> <p>Line Betting Essendon by 33½ pts</p>	 <p>Brisbane Lions v Geelong Gabba 1st September, 7:10pm</p> <p>Head-to-Head Bri \$3.00 / Gee \$1.35 (Geelong 67-74%)</p> <p>Line Betting Brisbane Lions +17½ pts</p> <p>Heritage Fund Bet LOST 7.94% (5.00%)</p> <p>Alpha Fund Bet -</p> <p>Beta Fund Bet -</p> <p>Line Fund Bet -</p> <p>Geelong 22.13 (145) <i>def.</i></p> <p>Brisbane 15.13 (103)</p> <p>Line Betting Geelong by 24½ pts</p>
 <p>Port Adelaide v Fremantle Football Park 1st September, 7:10pm</p> <p>Head-to-Head PA \$1.27 / Fre \$3.55 (Port Adelaide 72-79%)</p> <p>Line Betting Port Adelaide -21½ pts</p> <p>Heritage Fund Bet -</p> <p>Alpha Fund Bet -</p> <p>Beta Fund Bet -</p> <p>Line Fund Bet LOST 7.78% (8.59%)</p> <p>Port Adelaide 17.15 (117) <i>def.</i></p> <p>Fremantle 12.13 (85)</p> <p>Line Betting Port Adelaide by 10½ pts</p>	 <p>Sydney v Hawthorn SCG 2nd September, 1:10pm</p> <p>Head-to-Head Syd \$2.45 / Haw \$1.51 (Hawthorn 59-66%)</p> <p>Line Betting Sydney +12½ pts</p> <p>Heritage Fund Bet WON 8.65% (5.46%)</p> <p>Alpha Fund Bet -</p> <p>Beta Fund Bet WON 19.20% (24.49%)</p> <p>Line Fund Bet -</p> <p>Sydney 22.9 (141) <i>def.</i></p> <p>Hawthorn 10.9 (69)</p> <p>Line Betting Sydney by 84½ pts</p>	 <p>Bulldogs v Kangaroos Telstra Dome 2nd September, 2:10pm</p> <p>Head-to-Head WB \$3.60 / Kan \$1.26 (Kangaroos 72-79%)</p> <p>Line Betting Bulldogs +22½ pts</p> <p>Heritage Fund Bet LOST 10.89% (6.87%)</p> <p>Alpha Fund Bet -</p> <p>Beta Fund Bet -</p> <p>Line Fund Bet -</p> <p>Kangaroos 23.19 (157) <i>def.</i></p> <p>Bulldogs 14.9 (93)</p> <p>Line Betting Kangaroos by 41½ pts</p>	 <p>Melbourne v Carlton MCG 2nd September, 5:10pm</p> <p>Head-to-Head Mel \$1.33 / Car \$3.00 (Melbourne 67-75%)</p> <p>Line Betting No market</p> <p>Heritage Fund Bet -</p> <p>Alpha Fund Bet -</p> <p>Beta Fund Bet -</p> <p>Line Fund Bet -</p> <p>Melbourne 21.13 (139) <i>def.</i></p> <p>Carlton 15.18 (108)</p> <p>Line Betting No market</p>

- Nine bets for 4 wins and 5 losses; small profits for Strategy A, D and E Investors; losses for Strategy B, C and C+

Small Profit for Strategy A Investors

This weekend's results brought profits for the Beta and Line Funds, but losses for the Heritage and Alpha Funds. These latter Funds were denied profitability by a Tigers team that just couldn't quite hang on after leading by 3 points at the final change and continuing to lead for the early parts of the 4th quarter, only to wind up 10 points short at the final siren. The Heritage Fund also recorded losses on the Lions and the Dogs, but these bets had no serious prospect of a return at or shortly after the half-time break.

Here's what we have:

Results of Round 22 Wagers

Heritage Fund		ROI (59.4%)			
	Bet*	Price	Net Return*		
Richmond	11.24%	\$3.00	(11.2%)	Lost by 10 pts	
Brisbane	7.94%	\$3.00	(7.9%)	Lost by 42 pts	
Sydney	5.97%	\$2.45	8.7%	Won by 72 pts	
Bulldogs	10.89%	\$3.60	(10.9%)	Lost by 64 pts	
Total	36.0%		(21.4%)		

Alpha Fund		ROI (100.0%)			
	Bet*	Price	Net Return*		
Richmond	5.00%	\$3.00	(5.0%)	Lost by 10 pts	
Total	5.0%		(5.0%)		

Beta Fund		ROI 145.0%			
	Bet*	Price	Net Return*		
Sydney	13.24%	\$2.45	19.2%	Won by 72 pts	
Total	13.2%		19.2%		

Line Fund		ROI 26.7%			
	Bet*	Price	Net Return*		
Richmond	7.78%	\$1.90	7.0%	Won by 5½ pts	
Essendon	7.78%	\$1.90	7.0%	Won by 33½ pts	
Fremantle	7.78%	\$1.90	(7.8%)	Lost by 10½ pts	
Total	23.3%		6.2%		

These results are season-best for the Beta Fund and season-worst for the Heritage Fund:

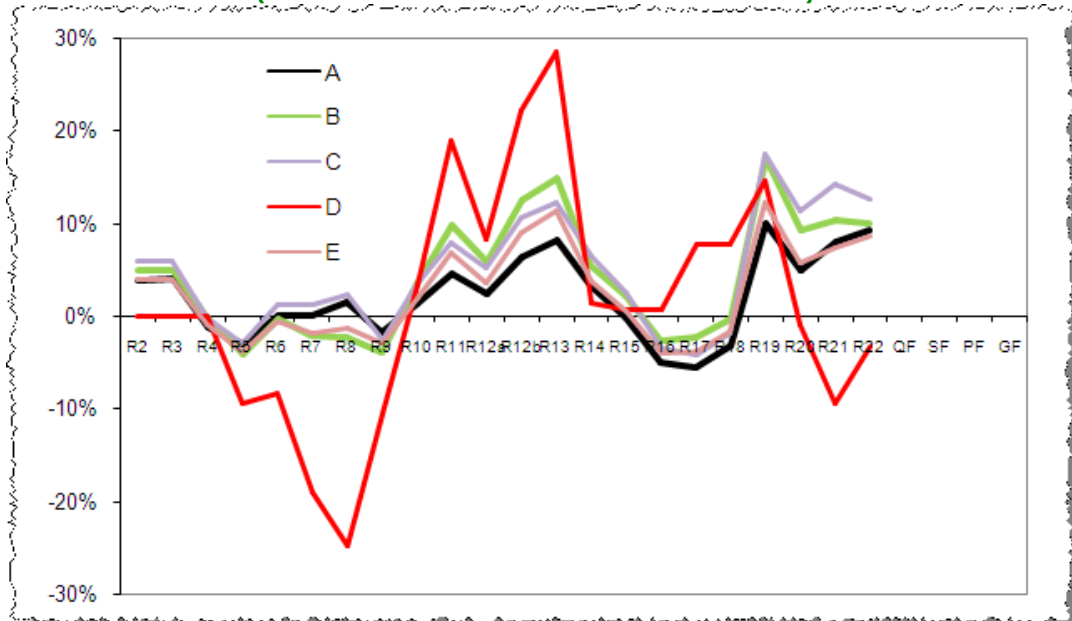
	Heritage		Alpha		Beta		Line		Weighted**	
	Bet %*	Ret %	Bet %*	Ret %	Bet %*	Ret %	Bet %*	Ret %	Bet %*	Ret %
R2	29.47%	19.90%							5.89%	3.98%
R3	15.47%	0.15%							3.09%	0.03%
R4	13.75%	(13.75%)			7.04%	(7.04%)			5.21%	(5.21%)
R5	23.24%	(8.32%)	2.70%	2.32%			38.96%	(9.35%)	9.49%	(1.79%)
R6	20.90%	12.39%			2.00%	1.60%	13.68%	1.08%	6.25%	3.15%
R7	1.95%	1.60%	2.50%	1.00%	2.50%	1.00%	10.62%	(10.62%)	3.20%	(0.04%)
R8	11.24%	(1.57%)	8.98%	6.76%			5.89%	(5.89%)	5.98%	1.46%
R9	16.66%	(16.66%)	2.30%	(2.30%)	1.74%	(1.74%)	30.04%	14.24%	7.75%	(3.32%)
R10	23.42%	25.76%			10.05%	(10.05%)	15.57%	14.01%	9.76%	3.04%
R11	17.52%	10.22%			0.88%	(0.88%)	33.21%	15.60%	7.13%	3.29%
R12a	5.41%	(5.41%)					10.76%	(10.76%)	2.16%	(2.16%)
R12b	7.46%	13.05%					15.57%	14.01%	3.05%	4.01%
R13					5.91%	3.25%	23.33%	6.22%	4.40%	1.76%
R14	10.33%	(10.33%)					27.06%	(27.06%)	4.77%	(4.77%)
R15	16.78%	(6.62%)			6.25%	(6.25%)	15.56%	(0.78%)	7.10%	(3.59%)
R16	13.56%	(13.56%)			6.00%	(6.00%)			4.81%	(4.81%)
R17	30.85%	(2.92%)			2.00%	(2.00%)	7.78%	7.00%	7.65%	(0.59%)
R18	22.72%	1.22%			5.25%	6.40%			6.38%	2.49%
R19	20.68%	62.55%					7.78%	7.00%	4.91%	13.21%
R20	10.93%	(12.49%)	3.58%	(3.09%)	4.38%	0.11%	15.56%	(15.56%)	6.53%	(5.10%)
R21	31.53%	3.39%	4.74%	9.00%			23.33%	(8.56%)	10.30%	2.97%
R22	36.03%	(21.41%)	5.00%	(5.00%)	13.24%	19.20%	23.33%	6.22%	15.92%	1.31%
QF/EF										
SF										
PF										
GF										
Total	379.89%	37.20%	29.80%	8.69%	67.24%	(2.40%)	318.03%	(3.18%)	141.75%	9.32%

* as a percentage of Notional Initial Funds

** based on Recommended Portfolio Weightings

Amongst the Major Strategies, A, D and E fared best this weekend.

Returns for Major Strategies
(all returns are as a % of Total Notional Initial Funds)



Investor Returns

	Bet*	Net Return*	ROI
Strategy A	15.92%	1.31%	8.23%
Strategy B	19.40%	(0.25%)	(1.27%)
Strategy C	18.61%	(1.54%)	(8.28%)
Strategy C+	28.11%	(10.18%)	(36.23%)
Strategy D	23.33%	6.22%	26.67%
Strategy E	17.34%	1.22%	7.05%

**all bets and net returns are calculated as a percentage of Notional Initial Funds*

Most gains and losses were quite small this weekend with the exception of that recorded by Strategy C+, which suffered due to its 60% Heritage Fund weighting and lost over 10%.

Taking into account this week's returns, most Investors now find themselves between 8 and 13% in front, though Strategy D Investors are showing a small loss.

Overall Fund Performance

		Heritage	Alpha	Beta	Line	
Fund Return		+37.20%	+8.69%	(-2.40%)	(-3.18%)	
Joined [Swapped]	Strategy	Heritage	Alpha	Beta	Line	Overall Return
(Percentage in each Fund)						
Pre-Season	A*	20%	35%	35%	10%	+9.32%
Pre-Season	B	25%	25%	25%	25%	+10.08%
Pre-Season	C	30%	30%	30%	10%	+12.73%
Pre-Season	D	0%	0%	0%	100%	(-3.18%)
Pre-Season	E	20%	30%	30%	20%	+8.69%
Round 6	A*	20%	35%	35%	10%	+12.61%
Pre-Season [Round 7 & 10]	A ▶ C ▶ A	20%	35%	35%	10%	+8.16%
Pre-Season [Round 13]	C ▶ C+	60%	10%	10%	20%	+8.00%

** Recommended portfolio weightings*

At the end of the regular season then the Heritage Fund is up around 37% having made 63 bets with a 25 and 38 (40%) record. Richmond remains the most profitable team for the Fund, the nine bets on them having realised a 51% RONF. Adelaide, Hawthorn, Collingwood and Sydney have also been solid RONF-providers for Heritage. Losses have been due primarily to Carlton and the Bulldogs. (Curiously, especially given the level of activity, the Fund is still yet to wager on Geelong or West Coast.)

The Alpha Fund had made only 9 bets this season for a 6 and 3 (67%) record and a 9% RONF. Richmond and Sydney have been the major profit contributors, Carlton and Melbourne the profit thieves.

HERITAGE FUND							ALPHA FUND						
	Bets	Win	Loss	% Outlayed	ROI	% RONF		Bets	Win	Loss	% Outlayed	ROI	% RONF
Adelaide	2	2	0	11.6%	174.5%	20.2%	Adelaide	0	0	0	0.0%	0.0%	0.0%
Brisbane Lions	3	1	2	14.7%	(44.1%)	(5.7%)	Brisbane Lions	1	1	0	0.5%	2.5%	0.0%
Carlton	13	3	10	77.8%	(42.6%)	(31.4%)	Carlton	1	0	1	3.1%	(100.0%)	(3.1%)
Collingwood	3	2	1	14.4%	53.4%	8.5%	Collingwood	1	1	0	2.5%	40.0%	1.0%
Essendon	4	2	2	24.9%	7.8%	2.0%	Essendon	0	0	0	0.0%	0.0%	0.0%
Fremantle	2	0	2	4.7%	(100.0%)	(3.4%)	Fremantle	1	1	0	2.7%	86.0%	2.3%
Geelong	0	0	0	0.0%	0.0%	0.0%	Geelong	0	0	0	0.0%	0.0%	0.0%
Hawthorn	5	3	2	24.0%	58.2%	13.3%	Hawthorn	1	1	0	1.7%	120.0%	2.0%
Kangaroos	6	3	3	35.9%	10.6%	2.2%	Kangaroos	0	0	0	0.0%	0.0%	0.0%
Melbourne	6	2	4	35.1%	(7.3%)	(3.8%)	Melbourne	1	0	1	2.3%	(100.0%)	(2.3%)
Port Adelaide	1	1	0	3.0%	135.0%	4.0%	Port Adelaide	0	0	0	0.0%	0.0%	0.0%
Richmond	9	3	6	79.8%	68.3%	50.8%	Richmond	2	1	1	9.7%	41.1%	4.0%
St Kilda	3	1	2	13.9%	(26.5%)	(3.7%)	St Kilda	0	0	0	0.0%	0.0%	0.0%
Sydney	1	1	0	6.0%	145.0%	8.7%	Sydney	1	1	0	7.3%	65.0%	4.8%
West Coast	0	0	0	0.0%	0.0%	0.0%	West Coast	0	0	0	0.0%	0.0%	0.0%
Western Bulldogs	5	1	4	42.7%	(54.4%)	(23.2%)	Western Bulldogs	0	0	0	0.0%	0.0%	0.0%
Total	63	25	38	388.4%	9.4%	37.2%	Total	9	6	3	29.8%	28.7%	8.7%

Only slightly less cautious than the Alpha Fund, the Beta Fund has made just 16 wagers this year, winning 7 and losing 9 (44%) and so far registering roughly a 2% loss, these losses due largely to wagers on Fremantle, Melbourne, Port Adelaide and Richmond. Offsetting these losses have been successful wagers on Adelaide, Essendon, Hawthorn and, in particular (thanks to this week's results), Sydney.

Finally, the Line Fund has made 44 bets for 22 wins and 22 losses (50%) and a negative RONF of around 3%. Pain has predominantly been inflicted by the Lions, Essendon, Fremantle, Hawthorn, St Kilda and the Bulldogs; joy has sprung mostly from Adelaide, Collingwood, Roos, Melbourne and Richmond wagers.

BETA FUND							LINE FUND						
	Bets	Win	Loss	% Outlayed	ROI	% RONF		Bets	Win	Loss	% Outlayed	ROI	% RONF
Adelaide	1	1	0	3.2%	148.0%	4.8%	Adelaide	1	1	0	7.8%	90.0%	7.0%
Brisbane Lions	3	2	1	8.1%	0.1%	(0.0%)	Brisbane Lions	1	0	1	7.0%	(100.0%)	(7.0%)
Carlton	0	0	0	0.0%	0.0%	0.0%	Carlton	6	3	3	41.8%	(7.7%)	(3.2%)
Collingwood	2	1	1	5.4%	(32.1%)	(1.9%)	Collingwood	3	2	1	21.5%	35.6%	8.1%
Essendon	1	1	0	5.9%	55.0%	3.3%	Essendon	4	1	3	23.6%	(37.1%)	(8.8%)
Fremantle	2	0	2	8.3%	(100.0%)	(8.3%)	Fremantle	4	0	4	29.2%	(100.0%)	(29.2%)
Geelong	0	0	0	0.0%	0.0%	0.0%	Geelong	0	0	0	0.0%	0.0%	0.0%
Hawthorn	1	1	0	2.0%	80.0%	1.6%	Hawthorn	3	1	2	23.3%	(35.1%)	(8.6%)
Kangaroos	0	0	0	0.0%	0.0%	0.0%	Kangaroos	3	3	0	23.3%	90.0%	21.0%
Melbourne	1	0	1	4.1%	(100.0%)	(4.1%)	Melbourne	5	4	1	38.9%	55.6%	20.2%
Port Adelaide	1	0	1	8.3%	(100.0%)	(8.3%)	Port Adelaide	0	0	0	0.0%	0.0%	0.0%
Richmond	1	0	1	6.0%	(100.0%)	(6.0%)	Richmond	5	4	1	38.9%	51.9%	20.2%
St Kilda	1	0	1	0.9%	(100.0%)	(0.9%)	St Kilda	3	1	2	21.5%	(28.1%)	(6.7%)
Sydney	2	1	1	15.0%	116.9%	17.5%	Sydney	1	1	0	5.6%	82.0%	4.6%
West Coast	0	0	0	0.0%	0.0%	0.0%	West Coast	2	1	1	13.4%	10.4%	1.4%
Western Bulldogs	0	0	0	0.0%	0.0%	0.0%	Western Bulldogs	3	0	3	22.3%	(100.0%)	(22.3%)
Total	16	7	9	67.2%	(2.5%)	(2.4%)	Total	44	22	22	318.1%	(0.7%)	(3.2%)

An Easy Round To Tip

- **BKB and Chi score 7; MM15 and MM16 score 6.**

With 7 of 8 favourites successful this weekend, it's little surprise that the average tipping scores are very high. In fact, the average score across our original band of tipsters was 6½, comfortably the season's highest average score.

Chi finished of the season well, scoring 7, leaving him on 112½ from 176 (63.9%) for the season and securing 4th place on the Tippers' Table. BKB also selected 7 winners, moving it to 118½ (67.3%), while MM15 and MM16 ended with a score of 6, taking them both to 113½ (64.5%).

Here's the detail:

Tips from all the Tipping Models (see Appendix for each Model's strategy)

Matchup	Head to Head				Line				
	Chi	Quila	BKB	CTL	Chi	Quila	A	B	C
Col Ade									
Ric StK									
WC Ess									
Bri Gee									
PA Fre									
Syd Haw									
WB Kan									
Mel Car					No market				
This Week	7	6	7	6	4	4			
Score	112.5	100.5	118.5	102.5	79	74	117.5	119.5	119.5

MM	2	3	4	5	6	7	8	9	10	11	12	13	14	15	16	17	18	19	20	21	22
Col Ade																					
Ric StK																					
WC Ess																					
Bri Gee																					
PA Fre																					
Syd Haw																					
WB Kan																					
Mel Car																					
This Week	7	6	5	8	7	7	7	7	6	7	6	6	6	6	6	6	6	6	6	6	
Score	83.5	100.5	103.5	103.5	101.5	106.5	103.5	105.5	104.5	102.5	105.5	106.5	111.5	113.5	113.5	106.5	108.5	106.5	107.5	110.5	105.5
Rank	21	20	15	15	19	7	15	11	14	18	11	7	3	1	1	7	5	7	6	4	11

As you can see, it was really only the Collingwood loss to Adelaide and the Swans win over the Hawks that caught a number of tipsters by surprise.

Here's the final Tipsters' Table:

Final Tipping Results

	Cum	% Correct	Av Pred Err	Rank
BKB	118.5	67.3%	28.20	1
MM15	113.5	64.5%	-	2 (aeq)
MM16	113.5	64.5%	-	2 (aeq)
CTM	112.5	63.9%	29.64	4
MM14	111.5	63.4%	-	5
MM21	110.5	62.8%	-	6
MM18	108.5	61.6%	-	7
MM20	107.5	61.1%	-	8
MM13	106.5	60.5%	-	9 (aeq)
MM17	106.5	60.5%	-	9 (aeq)
MM19	106.5	60.5%	-	9 (aeq)
MM7	106.5	60.5%	-	9 (aeq)
MM12	105.5	59.9%	-	13 (aeq)
MM22	105.5	59.9%	-	13 (aeq)
MM9	105.5	59.9%	-	13 (aeq)
MM10	104.5	59.4%	-	16 (aeq)
MM4	104.5	59.4%	-	16 (aeq)
MM5	103.5	58.8%	-	18 (aeq)
MM8	103.5	58.8%	-	18 (aeq)
CTL	102.5	58.2%	-	20 (aeq)
MM11	102.5	58.2%	-	20 (aeq)
NIT	102.5	58.2%	-	20 (aeq)
MM6	101.5	57.7%	-	23
MM3	100.5	57.1%	-	24 (aeq)
QTM	100.5	57.1%	31.11	24 (aeq)
MM2	93.5	53.1%	-	26

It's interesting to decompose each tipster's results into (rough) quarters of the season:

Decomposition of Final Tipping Results Into Season 'Quarters'

	R1-R5	R6-R11	1st Half	R12-R16	R17-R22	2nd Half	Total	2H v 1H
CTM	22	30.5	52.5	25	35	60	112.5	+7.5
QTM	19	29.5	48.5	21	31	52	100.5	+3.5
BKB	25	29.5	54.5	29	35	64	118.5	+9.5
CTL	19	25.5	44.5	27	31	58	102.5	+13.5
MM2	17	24.5	41.5	21	31	52	93.5	+10.5
MM3	20	26.5	46.5	22	32	54	100.5	+7.5
MM4	21	29.5	50.5	23	30	53	103.5	+2.5
MM5	22	26.5	48.5	22	33	55	103.5	+6.5
MM6	23	25.5	48.5	23	30	53	101.5	+4.5
MM7	21	29.5	50.5	25	31	56	106.5	+5.5
MM8	22	27.5	49.5	24	30	54	103.5	+4.5
MM9	23	25.5	48.5	26	31	57	105.5	+8.5
MM10	21	27.5	48.5	26	30	56	104.5	+7.5
MM11	19	28.5	47.5	27	28	55	102.5	+7.5
MM12	21	29.5	50.5	27	28	55	105.5	+4.5
MM13	23	29.5	52.5	26	28	54	106.5	+1.5
MM14	26	27.5	53.5	27	31	58	111.5	+4.5
MM15	26	29.5	55.5	28	30	58	113.5	+2.5
MM16	26	29.5	55.5	27	31	58	113.5	+2.5
MM17	24	30.5	54.5	22	30	52	106.5	(-2.5)
MM18	23	29.5	52.5	25	31	56	108.5	+3.5
MM19	21	28.5	49.5	25	32	57	106.5	+7.5
MM20	23	28.5	51.5	24	32	56	107.5	+4.5
MM21	24	27.5	51.5	26	33	59	110.5	+7.5
MM22	23	25.5	48.5	25	32	57	105.5	+8.5

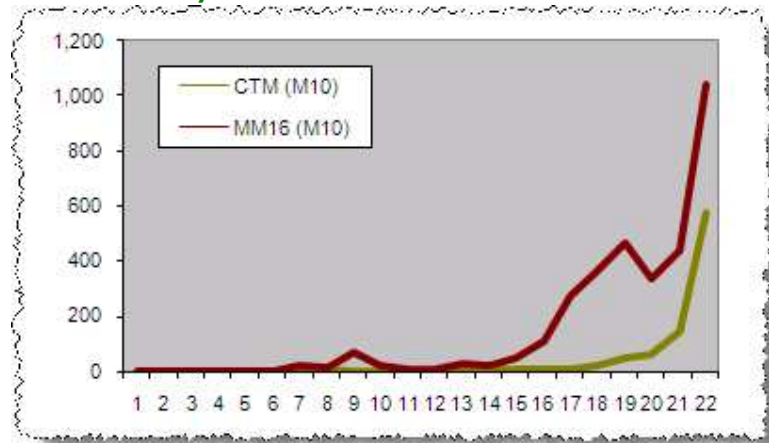
This tells us a few things (about this season at least):

- The bookies were remarkably consistent in predicting winners all year long – BKB is the best score or one fewer than it for all four quarters of the season
- The Ladder became a much better predictor of results in the second half of the season (+13.5 in the 2H v 1H column), but was still not a great predictor
- Momentum generally became a better predictor as the season progressed (note the plethora of pluses in the 2H v 1H column)
- Knowledge about the last 2 games is insufficient to become a reasonable tipster
- Quila needs to find a better approach to tipping

Final Monkey Update

Chi has finally put some distance between himself and the primates, his 7 from 8 this week lifting his M10 score to 574, this the number of Monkeys required, tipping at random, for the probability to be 10% that at least one of them would have as good a tipping record as his.

Round-by-Round M10 Scores: Chi and MM16



MM16 has finished 1 tip ahead of Chi, which, it transpires, is worth an additional 469 Monkeys at M10. For the record, BKB's tipping score of 118½ has an M10 equivalent of 29,384. That's quite a bit of monkey.

One technical thing I realised during the week is that I've probably been too kind to the Monkeys in counting draws as half tips for Chi and MM16. This forces Chi and MM16 to tie with the Monkey's performance for these games (since they effectively get a half for every game). If, instead, we leave these games out for Dog, Momentum Model and Monkey alike, the final M10 scores would have been 875 for Chi and 1,624 for MM16. So, I reckon I'll keep my dog (from what I've been hearing, he's been out-tipping a few of you too).

Final Chiras

Since I reintroduced the Chi Ranking System (Chiras) in the last newsletter, I thought I should report on the final Chiras rankings (for details on the System, see Newsletter 22): Under Chiras the final table looks like this:

Chi Rank	Team	Chi Ranking Points	Competition Points	Ladder Position
1	Geelong	576	72	1
2	West Coast	312	60	3
3	Port Adelaide	290	60	2
4	Kangaroos	242	56	4
5	Hawthorn	190	52	5
6	Adelaide	118	48	8
7	Sydney	102	50	7
8	Collingwood	88	52	6
9	St Kilda	4	46	9
10	Brisbane Lions	-46	40	10
10	Fremantle	-46	40	11
12	Western Bulldogs	-80	38	13
13	Essendon	-110	40	12
14	Melbourne	-500	20	14
15	Richmond	-558	14	16
16	Carlton	-582	16	15

Collingwood suffers most under Chiras, largely due to losses to Richmond and Melbourne earlier in the season. What's pleasing about this result with Chiras is that it seems to appropriately adjust Collingwood's ladder position for the relatively easy run home that they had, which you might recall we discussed some weeks back.

In contrast, Sydney's two wins against Hawthorn during the season and its win over Port Adelaide all served to elevate its Chiras position. Adelaide, meantime, owes its lofty position to wins over Sydney, the Roos, Hawthorn, Port Adelaide and Collingwood at various stages.

At the other end of the ladder, Richmond's wins over Essendon and Collingwood are enough to see it climb over Carlton, leaving the Blues with the Chiras Spoon.

West Coast's claim to 2nd over Port Adelaide can, I think, be argued based on each team's comparative record against others in the Final 8.

Top 8 Teams' Records Against Other Top 8 Teams

	W	L	Agg Margin
Geelong	7	3	171
West Coast	6	3	-36
Adelaide	6	4	100
Port Adelaide	5	5	-16
Hawthorn	5	5	-92
Collingwood	4	5	-2
Sydney	3	7	4
Kangaroos	3	7	-129

We'll analyse the relative performance of the top 8 teams a bit more closely in the next newsletter.

The Alternative Premierships

I'll not spend long on these this week other than to declare Sydney the winner of the During the 4th Quarter Premiership (a close-run thing indeed, with Sydney, the Hawks and the Cats each finishing on 62 points and separable only on percentage).

End of 1st Quarter Premiership			End of 2nd Quarter Premiership			End of 3rd Quarter Premiership			End of 4th Quarter Premiership		
Team	Pts	%	Team	Pts	%	Team	Pts	%	Team	Pts	%
Geelong	76	184.9	Geelong	74	162.6	Geelong	76	158.0	Geelong	72	152.8
Kangaroos	62	121.3	West Coast	60	120.2	West Coast	64	112.3	Port Adelaide	60	113.5
Adelaide	60	118.1	Kangaroos	60	118.6	Kangaroos	60	119.4	West Coast	60	111.7
Port Adelaide	56	132.9	Port Adelaide	56	113.9	Port Adelaide	52	117.7	Kangaroos	56	109.3
West Coast	54	112.3	Adelaide	52	111.8	Sydney	52	109.3	Hawthorn	52	113.0
Essendon	48	99.6	Sydney	50	109.4	Hawthorn	52	105.0	Collingwood	52	101.0
Sydney	42	102.4	St Kilda	50	103.8	St Kilda	48	102.7	Sydney	50	119.6
Carlton	40	87.4	Collingwood	46	103.4	Adelaide	44	106.5	Adelaide	48	109.9
Fremantle	38	92.5	Hawthorn	44	90.8	Collingwood	42	98.7	St Kilda	46	96.5
Brisbane Lions	36	103.0	Fremantle	42	105.3	Brisbane Lions	40	102.8	Brisbane Lions	40	105.4
Collingwood	36	82.3	Brisbane Lions	38	104.4	Fremantle	40	102.1	Fremantle	40	102.5
St Kilda	34	93.2	Western Bulldogs	32	87.4	Western Bulldogs	36	85.0	Essendon	40	91.2
Hawthorn	32	83.4	Richmond	32	83.3	Richmond	26	78.8	Western Bulldogs	38	85.5
Western Bulldogs	30	91.4	Essendon	28	86.0	Essendon	24	88.3	Melbourne	20	78.2
Richmond	30	81.4	Carlton	20	76.4	Carlton	24	80.2	Carlton	16	74.4
Melbourne	30	68.7	Melbourne	20	69.4	Melbourne	24	74.3	Richmond	14	77.2

During 1st Quarter Premiership			During 2nd Quarter Premiership			During 3rd Quarter Premiership			During 4th Quarter Premiership		
Team	Pts	%	Team	Pts	%	Team	Pts	%	Team	Pts	%
Geelong	76	184.9	Collingwood	70	131.0	Geelong	68	149.1	Sydney	62	157.3
Kangaroos	62	121.3	West Coast	60	128.7	Port Adelaide	56	125.7	Hawthorn	62	141.0
Adelaide	60	118.1	St Kilda	54	116.5	Kangaroos	54	121.1	Geelong	62	139.6
Port Adelaide	56	132.9	Geelong	52	141.7	Hawthorn	52	138.2	Essendon	52	100.3
West Coast	54	112.3	Adelaide	52	105.6	Sydney	50	109.1	West Coast	50	110.0
Essendon	48	99.6	Kangaroos	50	115.7	West Coast	50	98.7	Fremantle	50	103.9
Sydney	42	102.4	Brisbane Lions	50	105.9	Brisbane Lions	48	100.0	Adelaide	48	121.4
Carlton	40	87.4	Fremantle	48	122.2	St Kilda	44	100.6	Brisbane Lions	48	113.0
Fremantle	38	92.5	Sydney	48	117.1	Fremantle	42	96.7	Port Adelaide	46	101.7
Brisbane Lions	36	103.0	Port Adelaide	42	97.5	Essendon	40	92.8	Melbourne	44	91.1
Collingwood	36	82.3	Richmond	40	85.6	Collingwood	36	89.5	Western Bulldogs	40	86.9
St Kilda	34	93.2	Western Bulldogs	38	82.4	Carlton	36	87.3	Kangaroos	38	87.9
Hawthorn	32	83.4	Hawthorn	36	97.9	Melbourne	36	85.3	Collingwood	36	109.0
Western Bulldogs	30	91.4	Melbourne	30	70.1	Adelaide	34	96.8	St Kilda	30	79.3
Richmond	30	81.4	Carlton	22	66.2	Richmond	30	70.6	Richmond	24	72.7
Melbourne	30	68.7	Essendon	12	75.3	Western Bulldogs	28	80.1	Carlton	12	59.6

~~*~*~*~*~*~*~*~*~*~*~*~*~*~*

So, the first week of the Finals looks like this:

Qualifying Final #2

Friday Night (7:50pm CST) - Port Adelaide v West Coast at Football Park

Elimination Final #1

Saturday Afternoon (2:30pm AEST) - Hawthorn v Adelaide at Telstra Dome

Elimination Final #2

Saturday Night (7:30pm AEST) - Collingwood v Sydney at the MCG

Qualifying Final #1

Sunday Afternoon (2:45pm AEST) - Geelong v Kangaroos at the MCG

Tony

02 September 2007

Appendix

Tipping Model Strategies

Strategy Name	Basis for Tips
Chi Tipping Model (CTM)	Complex statistical model incorporating a range of factors.
Quila Tipping Model (QTM)	Uses an approach similar to that used for the CTM.
Bookies Know Best (BKB)	For each game, tips the TAB Sportsbet favourite. In the case of equal favourites, it tips the true home team or, if there's no true home team, tips the team with the higher ladder position (ties are broken using percentage then for-and-against margin).
Consult The Ladder (CTL)	Tips the team with the higher ladder position (ties are broken using percentage then for-and-against margin). For the first round of the season, use the ladder position at the end of the previous regular season.
Momentum Matters (MMx)	A series of strategies that involve building competition ladders based only on the results of the most recent x rounds of regular season games (drawing on games from the previous season if required). The MM2 strategy considers only the last 2 regular season rounds, the MM4 strategy only the last 4 rounds, and so on. Once a ladder has been built for a strategy, the selected team is that with the superior ladder position (as per CTL above). This year we'll track the performance of MM2, MM4, MM6, MM8, MM11, MM16 and MM22.
No Independent Thought (NIT)	Tips the team that is most popular amongst all other strategies.

Notional Initial Funds

For reasons that are somewhat technical (I'm happy to provide details to anyone who's interested but, broadly, it allows me to describe bets in terms of a common percentage for all Investors and still maintain the same share price for all Investors), I need to calculate what I call "Notional Initial Funds". It's calculated separately for each Fund.

For original Investors, the definition is straightforward:

$$\text{Notional Initial Funds} = \text{Actual Funds Invested}$$

For Investors who join the Fund post Round 1:

$$\text{Notional Initial Funds} = \text{Actual Funds Invested} / \text{Share Price at the time of investing}$$

(in other words, it's the notional amount that would need to have been invested at the start of the season in order to have returned an amount equal to the amount actually invested).

02 September 2007