



MAFL Funds : Season 2007

Where Statistics Meets Leather and Grass

26 August 2007

Season 2007, Number 21.1

In this Edition of the newsletter:

- Results of wagers and tips for Round 21
- Monkey Update
- The Alternative Premierships

Cats Beaten At Last

 <p>St Kilda v West Coast Telstra Dome 24th August, 7:40pm</p>	 <p>Carlton v Kangaroos Telstra Dome 25th August, 2:10pm</p>	 <p>Fremantle v Melbourne Subiaco 25th August, 2:10pm</p>	 <p>Collingwood v Sydney MCG 25th August, 7:10pm</p>
<p>Head-to-Head StK \$1.95 / WC \$1.78 (West Coast 49-56%)</p>	<p>Head-to-Head Car \$5.50 / Kan \$1.13 (Kangaroos 82-89%)</p>	<p>Head-to-Head Fre \$1.14 / Mel \$5.25 (Fremantle 81-88%)</p>	<p>Head-to-Head Col \$2.30 / Syd \$1.57 (Sydney 57-64%)</p>
<p>Line Betting St Kilda +6½ pts</p>	<p>Line Betting Carlton +27½ pts</p>	<p>Line Betting Fremantle -31½ pts</p>	<p>Line Betting Collingwood +9½ pts</p>
<p>Heritage Fund Bet LOST 3.07% (1.98%)</p>	<p>Heritage Fund Bet LOST 9.35% (6.02%)</p>	<p>Heritage Fund Bet -</p>	<p>Heritage Fund Bet WON 4.54% (2.93%)</p>
<p>Alpha Fund Bet -</p>	<p>Alpha Fund Bet -</p>	<p>Alpha Fund Bet -</p>	<p>Alpha Fund Bet -</p>
<p>Beta Fund Bet -</p>	<p>Beta Fund Bet -</p>	<p>Beta Fund Bet -</p>	<p>Beta Fund Bet -</p>
<p>Line Fund Bet -</p>	<p>Line Fund Bet LOST 7.78% (7.84%)</p>	<p>Line Fund Bet -</p>	<p>Line Fund Bet -</p>
<p>West Coast 16.10 (106) <i>def.</i> St Kilda 14.14 (98)</p>	<p>Kangaroos 24.17 (161) <i>def.</i> Carlton 11.13 (79)</p>	<p>Fremantle 22.12 (144) <i>def.</i> Melbourne 12.13 (85)</p>	<p>Collingwood 15.11 (101) <i>def.</i> Sydney 11.10 (76)</p>
<p>Line Betting West Coast by 1½ pts</p>	<p>Line Betting Kangaroos by 5½ pts</p>	<p>Line Betting Fremantle by 27½ pts</p>	<p>Line Betting Collingwood by 34½ pts</p>
 <p>Adelaide v Brisbane Lions Football Park 25th August, 7:10pm</p>	 <p>Bulldogs v Hawthorn Telstra Dome 26th August, 1:10pm</p>	 <p>Geelong v Port Adelaide Kardinia Park 26th August, 2:10pm</p>	 <p>Richmond v Essendon MCG 26th August, 5:10pm</p>
<p>Head-to-Head Ade \$1.38 / Bri \$2.90 (Adelaide 66-73%)</p>	<p>Head-to-Head WB \$3.00 / Haw \$1.36 (Hawthorn 67-74%)</p>	<p>Head-to-Head Gee \$1.18 / PA \$4.40 (Geelong 77-85%)</p>	<p>Head-to-Head Ric \$2.90 / Ess \$1.38 (Essendon 66-73%)</p>
<p>Line Betting Adelaide -15½ pts</p>	<p>Line Betting Bulldogs +15½ pts</p>	<p>Line Betting Geelong -26½ pts</p>	<p>Line Betting Richmond +15½ pts</p>
<p>Heritage Fund Bet -</p>	<p>Heritage Fund Bet LOST 6.34% (4.09%)</p>	<p>Heritage Fund Bet -</p>	<p>Heritage Fund Bet WON 17.61% (11.35%)</p>
<p>Alpha Fund Bet -</p>	<p>Alpha Fund Bet -</p>	<p>Alpha Fund Bet -</p>	<p>Alpha Fund Bet WON 9.00% (8.60%)</p>
<p>Beta Fund Bet -</p>	<p>Beta Fund Bet -</p>	<p>Beta Fund Bet -</p>	<p>Beta Fund Bet -</p>
<p>Line Fund Bet -</p>	<p>Line Fund Bet LOST 7.78% (7.84%)</p>	<p>Line Fund Bet -</p>	<p>Line Fund Bet WON 7.00% (7.06%)</p>
<p>Adelaide 12.14 (86) <i>def.</i> Brisbane Lions 8.12 (60)</p>	<p>Hawthorn 22.19 (151) <i>def.</i> Bulldogs 10.7 (67)</p>	<p>Pt Adelaide 16.10 (106) <i>def.</i> Geelong 15.11 (101)</p>	<p>Richmond 17.17 (119) <i>def.</i> Essendon 13.14 (92)</p>
<p>Line Betting Adelaide by 10½ pts</p>	<p>Line Betting Hawthorn by 68½ pts</p>	<p>Line Betting Port Adelaide by 31½ pts</p>	<p>Line Betting Richmond by 42½ pts</p>

- Nine bets, four winners (three of them thanks to the Tigers)

Thank You, Tigers (Again)

Carlton's capitulation to the Roos on Saturday afternoon meant that, even after the Pies' much-appreciated win over the Swans on Saturday evening, Investor happiness was largely dependent on the Tigers upsetting the Dons.

Once again, the Tigers delivered, kicking 7.2 to 4.3 in the last to run out relatively comfortable winners by 27 points.

In other games, St Kilda started brilliantly against the Eagles and took a 22 point lead into half time only to stumble in the 3rd quarter, scoring just 1.1, and then were forced to play catch-up in the 4th quarter, eventually losing by just 8 points.

The Bulldogs also looked good early, but their quarter-time lead was largely due to the Hawks' appalling accuracy (they kicked 1.7). Once the Hawks rediscovered their radar, they produced quarters yielding 5, 7 and 9 goals to overrun the Dogs and win by 84 points.

Here's what we have:

Results of Round 21 Wagers

Heritage Fund				ROI	10.8%
	Bet*	Price	Net Return*		
St Kilda	3.07%	\$1.95	(3.1%)		Lost by 8 pts
Carlton	9.35%	\$5.50	(9.3%)		Lost by 82 pts
Collingwood	3.50%	\$2.30	4.5%		Won by 25 pts
Bulldogs	6.34%	\$3.00	(6.3%)		Lost by 84 pts
Richmond	9.27%	\$2.90	17.6%		Won by 27 pts
Total	31.5%		3.4%		

Alpha Fund				ROI	190.0%
	Bet*	Price	Net Return*		
Richmond	4.74%	\$2.90	9.0%		Won by 27 pts
Total	4.7%		9.0%		

Line Fund				ROI	(36.7%)
	Bet*	Price	Net Return*		
Carlton	7.78%	\$1.90	(7.8%)		Lost by 54½ pts
Bulldogs	7.78%	\$1.90	(7.8%)		Lost by 68½ pts
Richmond	7.78%	\$1.90	7.0%		Won by 42½ pts
Total	23.3%		(8.6%)		

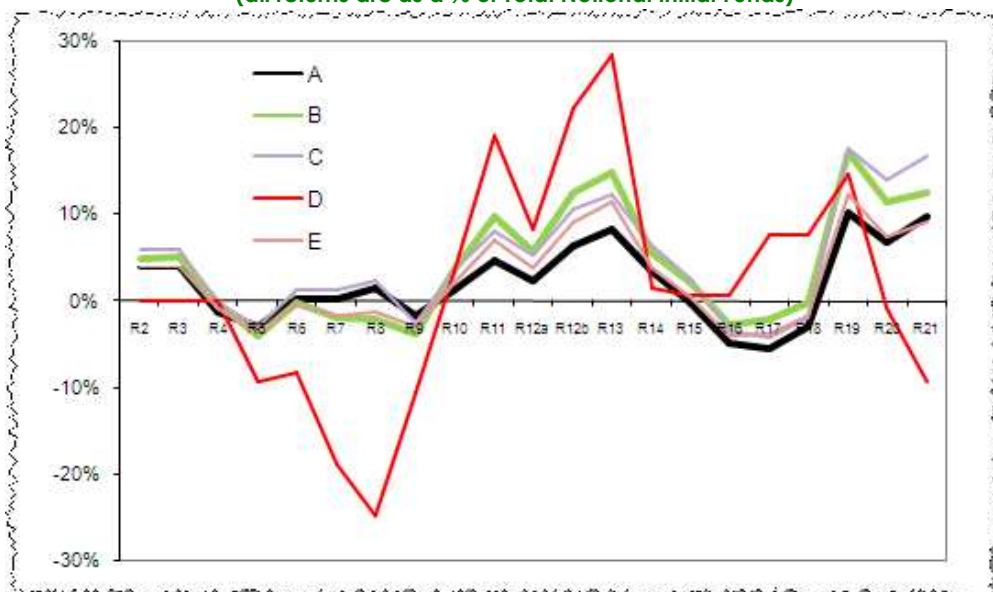
Investor Returns			
	Bet*	Net Return*	ROI
Strategy A	10.30%	2.97%	28.87%
Strategy B	14.90%	0.96%	6.44%
Strategy C	13.21%	2.86%	21.66%
Strategy C+	24.06%	1.22%	5.08%
Strategy D	23.33%	(8.56%)	(36.67%)
Strategy E	12.39%	1.67%	13.45%

* all bets and net returns are calculated as a percentage of Notional Initial Funds

So, profits ranging between about 1 and 3% for all Investors except those in Strategy D; they lost around 8½% this week.

Here's what that means for Investors, firstly as a graph:

Returns of Major Strategies
(all returns are as a % of Total Notional Initial Funds)



And here's the current position as a table:

Overall Fund Performance						
		Heritage	Alpha	Beta	Line	
Fund Return		+58.61%	+13.68%	(-21.60%)	(-9.40%)	
Joined [Swapped]	Strategy	Heritage	Alpha	Beta	Line	Overall Return
		(Percentage in each Fund)				
Pre-Season	A*	20%	35%	35%	10%	+8.01%
Pre-Season	B	25%	25%	25%	25%	+10.32%
Pre-Season	C	30%	30%	30%	10%	+14.27%
Pre-Season	D	0%	0%	0%	100%	(-9.40%)
Pre-Season	E	20%	30%	30%	20%	+7.47%
Round 6	A*	20%	35%	35%	10%	+10.77%
Pre-Season [Round 7 & 10]	A ▶ C ▶ A	20%	35%	35%	10%	+6.55%
Pre-Season [Round 13]	C ▶ C+	60%	10%	10%	20%	+15.18%

* Recommended portfolio weightings

(NB Last week I neglected to update the returns for the last three rows in this table. Apologies to the affected Investors.)

Chi Bags Six

Geelong's and Essendon's losses hurt most tipsters this weekend, many also failed to pick the Crows and the Pies, and a significant number felt that the Saints would prevail over the Eagles. All of which meant that this weekend's average tipping result was the lowest since Round 12.

Chi, though, managed a league-leading 6 from 8, getting him to within 2 tips of both MM16 and MM15, who managed only 5 and 4 respectively. BKB also managed just 5 this week, but that should be enough to see it take the tipping title as it is now 4 tips clear of the field.

- Chi scores 6, BKB and MM16 manage 5, and MM15 scores 4. BKB is now 4 tips clear.

Here's the detail:

Tips from all the Tipping Models (see Appendix for each Model's strategy)

Matchup	Head to Head				Line		A B C		
	Chi	Quila	BKB	CTL	Chi	Quila	A	B	C
StK WC									
Car Kan									
Fre Mel									
Col Syd									
Ade Bri									
WB Haw									
Gee PA									
Ric Ess									
This Week	6	4	5	5	3	2			
Score	105.5	94.5	111.5	96.5	75	70	111.5	113.5	115.5

MM	2	3	4	5	6	7	8	9	10	11	12	13	14	15	16	17	18	19	20	21	22	
StK WC																						
Car Kan																						
Fre Mel																						
Col Syd																						
Ade Bri																						
WB Haw																						
Gee PA																						
Ric Ess																						
This Week	4	5	4	4	3	3	3	3	3	3	3	4	4	4	5	5	6	5	5	6	6	
Score	86.5	94.5	98.5	95.5	94.5	99.5	96.5	98.5	98.5	99.5	95.5	99.5	100.5	105.5	107.5	107.5	100.5	102.5	100.5	101.5	104.5	99.5
Rank	21	19	13	17	19	10	16	13	13	17	10	7	3	1	1	7	5	7	6	4	10	

Here's the current cumulative table:

Cumulative Tipping Results

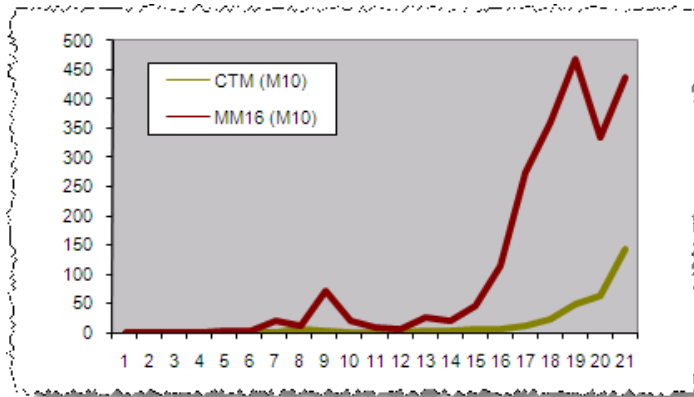
	Cum	% Correct	Av Pred Err
BKB	111.5	66.4%	28.11
MM15	107.5	64.0%	-
MM16	107.5	64.0%	-
CTM	105.5	62.8%	29.81
MM14	105.5	62.8%	-
MM21	104.5	62.2%	-
MM18	102.5	61.0%	-
MM20	101.5	60.4%	-
MM13	100.5	59.8%	-
MM17	100.5	59.8%	-
MM19	100.5	59.8%	-
MM22	99.5	59.2%	-
MM7	99.5	59.2%	-
MM12	99.5	59.2%	-
MM4	98.5	58.6%	-
MM9	98.5	58.6%	-
MM10	98.5	58.6%	-
CTL	96.5	57.4%	-
MM8	96.5	57.4%	-
NIT	96.5	57.4%	-
MM5	95.5	56.8%	-
MM11	95.5	56.8%	-
QTM	94.5	56.3%	31.38
MM6	94.5	56.3%	-
MM3	94.5	56.3%	-
MM2	86.5	51.5%	-

Monkey Update

With another solid round's tipping, Chi has lifted his M10 score to a very creditable 142. MM16's now stands at 439.

I think it's fair to declare victory over the primates.

Round-by-Round M10 Scores: Chi and MM16



The Alternative Premierships

Only one Alternative Premiership remains to be decided: the During the 4th quarter Premiership. Hawthorn need only to draw their final 4th quarter against the Swans next week to take it out; a Swans victory, however, will see them take the title.

End of 1st Quarter Premiership			End of 2nd Quarter Premiership			End of 3rd Quarter Premiership			End of 4th Quarter Premiership		
Team	Pts	%	Team	Pts	%	Team	Pts	%	Team	Pts	%
Geelong	72	182.7	Geelong	70	164.0	Geelong	72	158.1	Geelong	68	153.6
Kangaroos	62	126.5	West Coast	56	116.7	West Coast	60	109.8	Port Adelaide	56	112.5
Adelaide	56	113.5	Kangaroos	56	116.2	Kangaroos	56	117.5	West Coast	56	112.1
Port Adelaide	52	128.5	Port Adelaide	52	111.9	Hawthorn	52	109.7	Hawthorn	52	118.3
West Coast	50	109.2	Adelaide	48	112.1	Port Adelaide	48	118.3	Kangaroos	52	106.4
Essendon	48	102.8	St Kilda	46	103.9	Sydney	48	105.3	Collingwood	52	102.0
Carlton	40	91.7	Collingwood	46	103.7	St Kilda	48	103.1	Sydney	46	116.0
Sydney	38	96.3	Sydney	46	101.5	Collingwood	42	99.2	Adelaide	44	109.2
Fremantle	38	96.2	Hawthorn	44	97.6	Adelaide	40	106.2	St Kilda	42	95.8
Brisbane Lions	36	107.5	Fremantle	42	108.0	Brisbane Lions	40	105.8	Brisbane Lions	40	108.2
Collingwood	36	85.0	Brisbane Lions	38	106.6	Fremantle	40	102.4	Fremantle	40	104.2
Hawthorn	32	88.2	Western Bulldogs	32	89.0	Western Bulldogs	36	86.3	Essendon	40	91.1
St Kilda	30	89.5	Richmond	32	82.6	Essendon	24	90.1	Western Bulldogs	38	87.3
Richmond	30	83.3	Essendon	28	88.5	Carlton	24	80.7	Melbourne	16	75.8
Western Bulldogs	26	89.0	Carlton	20	78.2	Richmond	22	77.7	Carlton	16	74.3
Melbourne	26	63.1	Melbourne	16	65.2	Melbourne	20	71.4	Richmond	14	76.6

During 1st Quarter Premiership			During 2nd Quarter Premiership			During 3rd Quarter Premiership			During 4th Quarter Premiership		
Team	Pts	%	Team	Pts	%	Team	Pts	%	Team	Pts	%
Geelong	72	182.7	Collingwood	66	127.2	Geelong	64	146.8	Hawthorn	62	147.4
Kangaroos	62	126.5	West Coast	56	124.9	Port Adelaide	56	132.4	Sydney	58	154.6
Adelaide	56	113.5	St Kilda	54	122.5	Kangaroos	50	120.2	Geelong	58	141.8
Port Adelaide	52	128.5	Geelong	52	145.7	Sydney	50	113.4	West Coast	50	119.3
West Coast	50	109.2	Adelaide	52	110.7	Hawthorn	48	137.0	Fremantle	50	109.5
Essendon	48	102.8	Fremantle	48	123.7	Brisbane Lions	48	104.3	Brisbane Lions	48	115.8
Carlton	40	91.7	Kangaroos	46	106.5	West Coast	46	97.4	Essendon	48	94.0
Sydney	38	96.3	Brisbane Lions	46	105.6	St Kilda	44	101.6	Adelaide	44	119.4
Fremantle	38	96.2	Sydney	44	107.2	Essendon	40	93.3	Melbourne	44	90.7
Brisbane Lions	36	107.5	Port Adelaide	38	97.2	Fremantle	38	93.2	Port Adelaide	42	96.3
Collingwood	36	85.0	Western Bulldogs	38	89.0	Collingwood	36	90.1	Western Bulldogs	40	90.2
Hawthorn	32	88.2	Hawthorn	36	107.0	Melbourne	36	85.9	Collingwood	36	112.3
St Kilda	30	89.5	Richmond	36	81.8	Carlton	32	85.5	Kangaroos	34	83.2
Richmond	30	83.3	Melbourne	26	67.4	Adelaide	30	95.3	St Kilda	26	76.4
Western Bulldogs	26	89.0	Carlton	22	65.9	Western Bulldogs	28	80.4	Richmond	24	73.8
Melbourne	26	63.1	Essendon	12	77.1	Richmond	26	68.7	Carlton	8	57.9

It's been a while since we took a look at the correlations between the points scored in these various Premierships and those scored in the Premiership proper. The correlations now are:

Correlation Between Competition Points and Points In ...

	1st	2nd	3rd	4th
<i>End of Quarter Premierships</i>	0.63	0.90	0.90	1.00
<i>During the Quarter Premierships</i>	0.63	0.57	0.75	0.60

As we've seen before, leading at the end of any quarter is a key indicator of likely victory. Here we see this in the high positive correlations in the top row.

Also, we once again see the importance of winning the 3rd quarter, evidenced by the +0.75 correlation between competition points and 'points' scored in the During the 3rd Quarter Premiership.

This weekend's results are consistent with these season-wide findings.

Winning teams led at the end of:

- Three of eight first quarters (and also tied at the end of two)
- Six of eight second quarters
- Eight of eight third quarters

Also, winning teams won:

- Three of eight first quarters (and also tied two)
- Seven of eight second quarters
- Eight of eight third quarters
- Five of eight fourth quarters

~~*~*~*~*~*~*~*~*~*~*~*~*~*~*

For anyone who might be wondering, the Funds do traditionally trade through the Finals. If you'd like to cash out your position as at the end of the next round, please let me know and I'll make the necessary arrangements to pay you whatever is owing to you.

Last year the Fund was very conservative during the Finals; this year? Who knows?

'til Thursday

Tony

26 August 2007

Appendix

Tipping Model Strategies

Strategy Name	Basis for Tips
Chi Tipping Model (CTM)	Complex statistical model incorporating a range of factors.
Quila Tipping Model (QTM)	Uses an approach similar to that used for the CTM.
Bookies Know Best (BKB)	For each game, tips the TAB Sportsbet favourite. In the case of equal favourites, it tips the true home team or, if there's no true home team, tips the team with the higher ladder position (ties are broken using percentage then for-and-against margin).
Consult The Ladder (CTL)	Tips the team with the higher ladder position (ties are broken using percentage then for-and-against margin). For the first round of the season, use the ladder position at the end of the previous regular season.
Momentum Matters (MMx)	A series of strategies that involve building competition ladders based only on the results of the most recent x rounds of regular season games (drawing on games from the previous season if required). The MM2 strategy considers only the last 2 regular season rounds, the MM4 strategy only the last 4 rounds, and so on. Once a ladder has been built for a strategy, the selected team is that with the superior ladder position (as per CTL above). This year we'll track the performance of MM2, MM4, MM6, MM8, MM11, MM16 and MM22.
No Independent Thought (NIT)	Tips the team that is most popular amongst all other strategies.

Notional Initial Funds

For reasons that are somewhat technical (I'm happy to provide details to anyone who's interested but, broadly, it allows me to describe bets in terms of a common percentage for all Investors and still maintain the same share price for all Investors), I need to calculate what I call "Notional Initial Funds". It's calculated separately for each Fund.

For original Investors, the definition is straightforward:

$$\text{Notional Initial Funds} = \text{Actual Funds Invested}$$

For Investors who join the Fund post Round 1:

$$\text{Notional Initial Funds} = \text{Actual Funds Invested} / \text{Share Price at the time of investing}$$

(in other words, it's the notional amount that would need to have been invested at the start of the season in order to have returned an amount equal to the amount actually invested).

26 August 2007