



MAFL Funds : Season 2007

Where Statistics Meets Leather and Grass

12 August 2007

Season 2007, Number 19.1

In this Edition of the newsletter:

- Results of wagers and tips for Round 19
- Monkey Update
- The Alternative Premierships

Tigers and Dees Spring Upsets

 **Richmond**
v
Collingwood
MCG
10th August, 7:40pm

Head-to-Head
Ric \$6.25 / Col \$1.10
(Collingwood 84-91%)

Line Betting
Richmond +36½ pts

Heritage Fund Bet
WON 69.93% (66.50%)

Alpha Fund Bet
-

Beta Fund Bet
-

Line Fund Bet
-

Richmond 18.8 (116)
def.
Collingwood 14.12 (96)

Line Betting
Richmond by 56½ pts

 **Hawthorn**
v
Brisbane Lions
MCG
11th August, 2:10pm

Head-to-Head
Haw \$1.72 / Bri \$2.05
(Hawthorn 51-58%)

Line Betting
Hawthorn -6½ pts

Heritage Fund Bet
-

Alpha Fund Bet
-

Beta Fund Bet
-

Line Fund Bet
-

Hawthorn 17.13 (115)
def.
Brisbane 13.13 (91)

Line Betting
Hawthorn by 17½ pts

 **Port Adelaide**
v
Carlton
Football Park
11th August, 2:40pm

Head-to-Head
PA \$1.06 / Car \$8.00
(Port Adelaide 88-94%)

Line Betting
Port Adelaide -39½ pts

Heritage Fund Bet
-

Alpha Fund Bet
-

Beta Fund Bet
-

Line Fund Bet
-

Pt Adelaide 17.14 (116)
def.
Carlton 14.9 (93)

Line Betting
Carlton by 16½ pts

 **Bulldogs**
v
Melbourne
Telstra Dome
11th August, 7:10pm

Head-to-Head
Bul \$1.22 / Mel \$4.00
(Bulldogs 75-82%)

Line Betting
Bulldogs -23½ pts

Heritage Fund Bet
-

Alpha Fund Bet
-

Beta Fund Bet
-

Line Fund Bet
-

Melbourne 19.15 (129)
def.
Bulldogs 12.15 (87)

Line Betting
Melbourne by 65½ pts

 **Sydney**
v
St Kilda
Telstra Stadium
11th August, 7:10pm

Head-to-Head
Syd \$1.37 / StK \$2.95
(Sydney 66-73%)

Line Betting
Sydney -17½ pts

Heritage Fund Bet
-

Alpha Fund Bet
-

Beta Fund Bet
-

Line Fund Bet
WON 7.00% (6.50%)

Sydney 12.10 (82)
def.
St Kilda 9.11 (65)

Line Betting
St Kilda by ½ pt

 **Kangaroos**
v
West Coast
Telstra Dome
12th August, 1:10pm

Head-to-Head
Kan \$2.30 / WC \$1.57
(West Coast 57-64%)

Line Betting
Kangaroos +8½ pts

Heritage Fund Bet
LOST 7.37% (7.00%)

Alpha Fund Bet
-

Beta Fund Bet
-

Line Fund Bet
-

West Coast 17.17 (119)
def.
Kangaroos 15.12 (102)

Line Betting
West Coast by 8½ pts

 **Geelong**
v
Adelaide
Kardinia Park
12th August, 2:10pm

Head-to-Head
Gee \$1.20 / Ade \$4.20
(Geelong 76-83%)

Line Betting
Geelong -23½ pts

Heritage Fund Bet
-

Alpha Fund Bet
-

Beta Fund Bet
-

Line Fund Bet
-

Geelong 15.13 (103)
def.
Adelaide 10.10 (70)

Line Betting
Geelong by 9½ pts

 **Fremantle**
v
Essendon
Subiaco
12th August, 2:40pm

Head-to-Head
Fre \$1.15 / Ess \$5.00
(Fremantle 80-87%)

Line Betting
Fremantle -32½ pts

Heritage Fund Bet
-

Alpha Fund Bet
-

Beta Fund Bet
-

Line Fund Bet
-

Fremantle 21.14 (140)
def.
Essendon 11.11 (77)

Line Betting
Fremantle by 30½ pts

- Three bets for two wins including the underdog Tigers makes for a profitable weekend for all

Our Mascot Chi Says “Yeah!”



I could write at length about the philosophy behind the four MAFL Funds, explain how the Heritage Fund is based on hours of research during which I found that home team underdogs won more often than their odds suggest they should, remind you that this Fund will back losers more often than it will back winners but that the returns made on the winners should more than compensate for the wagers lost on the losers, and so on.

Or, I could just tell you that on Friday night, priced at \$6.25 and carrying a Fund Record 13.32% on their backs, the Tigers (running last) faced Collingwood (equal 3rd) and led at every change, eventually winning by 20 points, causing the Heritage Fund to leap 69.9c and making a small mascot very happy.

Same message, better story.

After that, the remainder of the weekend couldn't help but be anticlimactic, though there was some excitement still to be had as, on Saturday night, the Saints registered a seemingly meaningless behind 6¼ minutes into time-on in the 4th to drag our Line bet out of the fire, and then, on Sunday, the Roos remained in touch with the Eagles for most of the game before trailing off late in the final term to lose by 17.

And so, we have this summary:

Result of Round 19 Wagers

Heritage Fund				ROI	302.4%
	Bet*	Price	Net Return*		
Richmond	13.32%	\$6.25	69.9%	Won by 20 pts	
Kangaroos	7.37%	\$2.30	(7.4%)	Lost by 17 pts	
Total	20.7%		62.6%		

Line Fund				ROI	90.0%
	Bet*	Price	Net Return*		
St Kilda	7.78%	\$1.90	7.0%	Won by ½ pt	
Total	7.8%		7.0%		

Investor Returns			
	Bet*	Net Return*	ROI
Strategy A	4.92%	13.21%	268.76%
Strategy B	7.12%	17.39%	244.33%
Strategy C	6.99%	19.47%	278.71%
Strategy C+	13.97%	38.94%	278.71%
Strategy D	7.78%	7.00%	90.00%
Strategy E	5.69%	13.91%	244.33%

*all bets and net returns are calculated as a percentage of Notional Initial Funds

Increases then in the (notional initial) wealth of all Investors this week, with returns varying from 7% for those following Strategy D to a whopping 39% for those pursuing Strategy C+, a strategy that's long on Heritage and Line.

The 69.9c increase in the Heritage Fund resulting from the Tigers' victory is, you'll not be at all surprised to hear, considerably the largest single return in MAFL history, eclipsing a 28.9c increase from a successful wager on the Blues at \$4.50 in Round 18 of 2006, and a 24.9c increase from a similarly spectacular wager on the Tigers at \$5.75 in Round 8 of that same season.

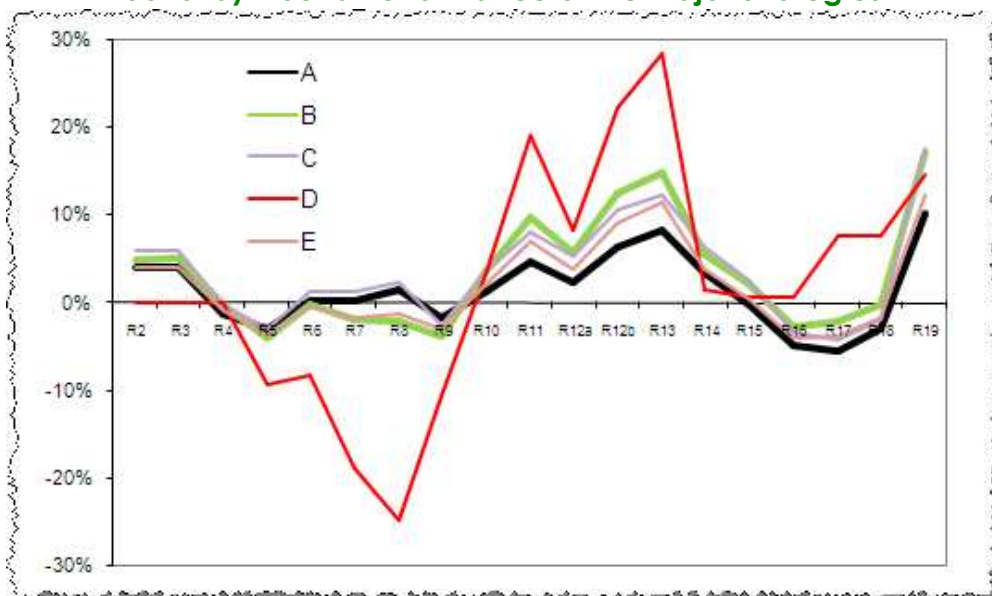
Here's what it all means for Investors:

Overall Fund Performance						
	Heritage	Alpha	Beta	Line		
Fund Return	+67.71%	+7.77%	(-21.71%)	+14.71%		
Joined [Swapped]	Strategy	Heritage	Alpha	Beta	Line	Overall Return
(Percentage in each Fund)						
Pre-Season	A*	20%	35%	35%	10%	+10.14%
Pre-Season	B	25%	25%	25%	25%	+17.12%
Pre-Season	C	30%	30%	30%	10%	+17.60%
Pre-Season	D	0%	0%	0%	100%	+14.71%
Pre-Season	E	20%	30%	30%	20%	+12.30%
Round 6	A*	20%	35%	35%	10%	+13.23%
Pre-Season [Round 7 & 10]	A ▶ C ▶ A	20%	35%	35%	10%	+9.14%
Pre-Season [Round 13]	C ▶ C+	60%	10%	10%	20%	+23.31%

* Recommended portfolio weightings

It's a week though where numbers alone don't do the story justice. Here's one of the prettiest pictures I've seen for quite a while:

Round-by-Round Performance of the Major Strategies



I might not know art, but I do know what I like. I'm particularly taken here by the artist's minimalist use of lines, and the sense of optimism conveyed by the upward sloping brushstrokes on the far right of the canvas.

Chi Narrows the Gap to MM16

- **BKB now leads outright and is the first to 100. Chi trails MM16 by 4 tips.**

Collingwood's loss to the Tigers caught all our tipsters by surprise this weekend, as did the Bulldogs' loss to Melbourne (note that I erroneously recorded the tips of a few MM strategies in Thursday's newsletter - I think I was too focused on making the table look attractive rather than on making sure it was accurate). A number of tipsters also, to their cost, opted for the Roos over the Eagles and St Kilda over Sydney.

All of which contributed to an average score of just 4.58 out of 8 for our regular tipsters, the lowest average since Round 12.

Chi and BKB each fared well, bagging 6 from 8, as did MM19, MM20, MM21 and MM22, this score being the weekend's best. MM16 and MM15 managed only 5, allowing Chi to close within 4 tips of MM16.

Here's the detail, with the presence of a guernsey connoting a correct tip and the absence connoting an incorrect tip.

Tips from all the Tipping Models (see Appendix for each Model's strategy)

Matchup	Head to Head				Line	
	Chi	Quila	BKB	CTL	Chi	Quila
Ric v Col						
Haw v Bri						
PA v Car						
WB v Mel						
Syd v StK						
Kan v WC						
Gee v Ade						
Fre v Ess						
This Week	6	5	6	4	3	2
Total	94	84	100	86	67	63

MM	2	3	4	5	6	7	8	9	10	11	12	13	14	15	16	17	18	19	20	21	22	A	B	C
Ric Col																								
Haw Bri																								
PA Car																								
WB Mel																								
Syd StK																								
Kan WC																								
Gee Ade																								
Fre Ess																								
MM	2	3	4	5	6	7	8	9	10	11	12	13	14	15	16	17	18	19	20	21	22	A	B	C
This Week	5	3	3	4	3	3	3	3	5	4	5	4	5	5	5	5	4	6	6	6	6	4	4	4
Total	78	83	88	85	85	90	87	89	89	88	92	92	96	98	98	91	91	90	91	93	89	101	104	105
Rank	21	20	15	18	18	10	17	12	12	15	5	5	3	1	2	7	7	10	7	4	12			

In League order, here's where all the various tipsters are at:

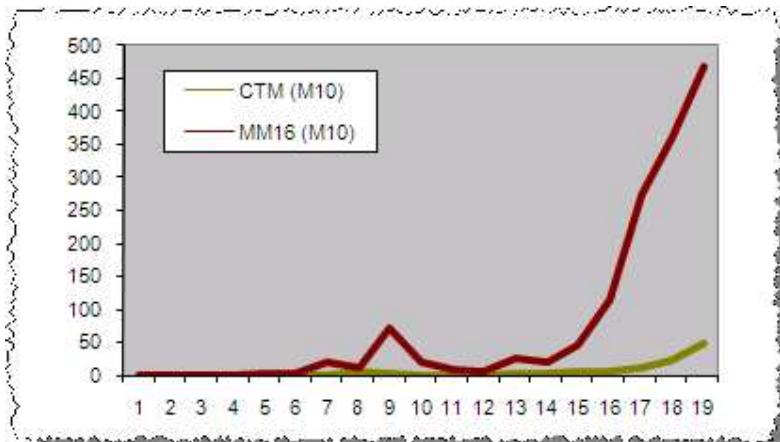
Cumulative Tipping Results

	Cum	% Correct	Av Pred Err
BKB	100	65.8%	29.03
MM15	99	65.1%	-
MM16	98	64.5%	-
MM14	96	63.2%	-
CTM	94	61.8%	30.42
MM21	93	61.2%	-
MM12	92	60.5%	-
MM13	92	60.5%	-
MM17	91	59.9%	-
MM18	91	59.9%	-
MM20	91	59.9%	-
MM7	90	59.2%	-
MM19	90	59.2%	-
MM9	89	58.6%	-
MM10	89	58.6%	-
MM22	89	58.6%	-
MM4	88	57.9%	-
MM11	88	57.9%	-
NIT	87	57.2%	-
MM8	87	57.2%	-
CTL	86	56.6%	-
MM5	85	55.9%	-
MM6	85	55.9%	-
QTM	84	55.3%	32.03
MM3	83	54.6%	-
MM2	78	51.3%	-

Monkey Update

Once again both Chi and MM16 have increased their M10 scores, Chi to 49 and MM16 to 470. These are season-best M10 scores for them both; I think they have the monkeys on the run.

Round-by-Round M10 Scores: Chi and MM16



The Alternative Premierships

With three rounds still to play, Geelong has wrapped up the End of 2nd, 3rd and 4th Quarter Premierships, and looks tough to beat in the End of 1st Quarter Premiership too, needing just one more win to guarantee the complete set.

Scanning across the End of Quarter Premierships it's clear that, amongst Traditional Premiership contenders, Sydney and Hawthorn have been the masters at come-from-behind victories.

End of 1st Quarter Premiership			End of 2nd Quarter Premiership			End of 3rd Quarter Premiership			End of 4th Quarter Premiership		
Team	Pts	%	Team	Pts	%	Team	Pts	%	Team	Pts	%
Geelong	68	197.4	Geelong	66	171.8	Geelong	68	164.4	Geelong	64	159.7
Kangaroos	58	131.1	West Coast	52	119.2	Kangaroos	52	118.0	Hawthorn	48	115.1
Adelaide	48	113.4	Kangaroos	52	115.3	West Coast	52	109.2	Port Adelaide	48	113.2
West Coast	46	115.4	Port Adelaide	48	113.6	Port Adelaide	44	119.9	West Coast	48	111.1
Port Adelaide	44	122.8	Sydney	44	103.7	Hawthorn	44	107.2	Kangaroos	48	103.9
Essendon	44	104.0	Adelaide	40	109.2	Sydney	44	106.7	Sydney	44	119.5
Brisbane Lions	36	111.2	Hawthorn	40	97.1	St Kilda	44	101.1	Collingwood	44	100.1
Carlton	36	90.5	Fremantle	38	105.2	Brisbane Lions	40	110.7	Brisbane Lions	38	110.6
Fremantle	32	95.6	St Kilda	38	99.9	Fremantle	36	101.8	St Kilda	38	94.0
Hawthorn	32	95.3	Collingwood	38	98.5	Western Bulldogs	36	87.8	Western Bulldogs	38	91.4
Sydney	32	93.7	Brisbane Lions	36	110.2	Collingwood	34	96.2	Adelaide	36	106.0
Richmond	30	85.1	Essendon	28	89.9	Adelaide	32	101.9	Fremantle	36	103.2
Collingwood	30	80.2	Western Bulldogs	28	88.0	Carlton	24	81.9	Essendon	36	90.9
St Kilda	26	82.9	Richmond	28	82.3	Essendon	20	89.7	Melbourne	16	76.5
Melbourne	24	61.3	Carlton	16	77.2	Melbourne	20	71.8	Carlton	16	75.1
Western Bulldogs	22	85.8	Melbourne	16	67.8	Richmond	18	75.9	Richmond	10	74.6

The During 2nd, 3rd and 4th Premierships are all still up for grabs, with Collingwood looking good things for the During the 2nd Quarter Premiership, Geelong well placed in the During the 3rd Quarter Premiership, and the During the 4th Quarter Premiership a race amongst Hawthorn, Sydney and Geelong.

Meantime Carlton have all but secured the Spoon for the During the 4th Quarter Premiership after being blown away in yet another 4th quarter, leaving them with just 2 winning 4th quarters all season.

During 1st Quarter Premiership			During 2nd Quarter Premiership			During 3rd Quarter Premiership			During 4th Quarter Premiership		
Team	Pts	%	Team	Pts	%	Team	Pts	%	Team	Pts	%
Geelong	68	197.4	Collingwood	58	120.7	Geelong	60	150.1	Hawthorn	58	141.7
Kangaroos	58	131.1	St Kilda	50	123.6	Port Adelaide	52	133.5	Sydney	54	168.4
Adelaide	48	113.4	Geelong	48	148.1	Brisbane Lions	48	111.6	Geelong	54	147.2
West Coast	46	115.4	West Coast	48	123.3	Kangaroos	46	124.3	Essendon	44	94.7
Port Adelaide	44	122.8	Fremantle	44	118.1	Sydney	46	113.0	West Coast	42	116.9
Essendon	44	104.0	Sydney	44	115.6	West Coast	42	92.1	Fremantle	42	107.0
Brisbane Lions	36	111.2	Adelaide	44	104.9	Hawthorn	40	128.9	Adelaide	40	120.6
Carlton	36	90.5	Brisbane Lions	42	109.2	St Kilda	40	103.6	Brisbane Lions	40	110.4
Fremantle	32	95.6	Port Adelaide	38	105.0	Essendon	36	89.3	Western Bulldogs	40	102.6
Hawthorn	32	95.3	Kangaroos	38	101.2	Fremantle	34	96.1	Melbourne	40	92.0
Sydney	32	93.7	Western Bulldogs	38	91.1	Collingwood	32	91.7	Port Adelaide	38	94.4
Richmond	30	85.1	Richmond	32	79.3	Carlton	32	91.3	Collingwood	36	114.4
Collingwood	30	80.2	Hawthorn	28	98.6	Melbourne	32	80.5	Kangaroos	26	75.7
St Kilda	26	82.9	Melbourne	26	75.0	Western Bulldogs	28	87.4	St Kilda	26	75.1
Melbourne	24	61.3	Carlton	18	64.8	Adelaide	22	88.8	Richmond	20	71.0
Western Bulldogs	22	85.8	Essendon	12	78.8	Richmond	18	64.6	Carlton	8	57.6

Of continuing concern to fans must be the final term performances of the Roos, Collingwood and Port Adelaide. In finals, it won't be enough to play well for three quarters and then hope to cruise to the finish.

Appendix

Tipping Model Strategies

Strategy Name	Basis for Tips
Chi Tipping Model (CTM)	Complex statistical model incorporating a range of factors.
Quila Tipping Model (QTM)	Uses an approach similar to that used for the CTM.
Bookies Know Best (BKB)	For each game, tips the TAB Sportsbet favourite. In the case of equal favourites, it tips the true home team or, if there's no true home team, tips the team with the higher ladder position (ties are broken using percentage then for-and-against margin).
Consult The Ladder (CTL)	Tips the team with the higher ladder position (ties are broken using percentage then for-and-against margin). For the first round of the season, use the ladder position at the end of the previous regular season.
Momentum Matters (MMx)	A series of strategies that involve building competition ladders based only on the results of the most recent x rounds of regular season games (drawing on games from the previous season if required). The MM2 strategy considers only the last 2 regular season rounds, the MM4 strategy only the last 4 rounds, and so on. Once a ladder has been built for a strategy, the selected team is that with the superior ladder position (as per CTL above). This year we'll track the performance of MM2, MM4, MM6, MM8, MM11, MM16 and MM22.
No Independent Thought (NIT)	Tips the team that is most popular amongst all other strategies.

Notional Initial Funds

For reasons that are somewhat technical (I'm happy to provide details to anyone who's interested but, broadly, it allows me to describe bets in terms of a common percentage for all Investors and still maintain the same share price for all Investors), I need to calculate what I call "Notional Initial Funds". It's calculated separately for each Fund.

For original Investors, the definition is straightforward:

$$\text{Notional Initial Funds} = \text{Actual Funds Invested}$$

For Investors who join the Fund post Round 1:

$$\text{Notional Initial Funds} = \text{Actual Funds Invested} / \text{Share Price at the time of investing}$$

(in other words, it's the notional amount that would need to have been invested at the start of the season in order to have returned an amount equal to the amount actually invested).

12 August 2007