



MAFL Funds : Season 2007

Where Statistics Meets Leather and Grass

5 August 2007

Season 2007, Number 18.1

In this Edition of the newsletter:

- Results of wagers and tips for Round 18
- Monkey Update
- The Alternative Premierships

Eagles Stumble Again

 <p>Bulldogs v St Kilda Telstra Dome 3rd August, 7:40pm</p>	 <p>Carlton v Collingwood MCG 4th August, 2:10pm</p>	 <p>Geelong v Richmond Kardinia Park 4th August, 2:10pm</p>	 <p>Brisbane Lions v Kangaroos Gabba 4th August, 7:10pm</p>
<p>Head-to-Head WB \$3.50 / StK \$1.27 (St Kilda 71-79%)</p>	<p>Head-to-Head Car \$6.50 / Col \$1.09 (Collingwood 85-92%)</p>	<p>Head-to-Head Gee \$1.02 / Ric \$11.00 (Geelong 91-98%)</p>	<p>Head-to-Head Bri \$1.64 / Kan \$2.18 (Brisbane 54-61%)</p>
<p>Line Betting Bulldogs +21½ pts</p>	<p>Line Betting Carlton +32½ pts</p>	<p>Line Betting Geelong -50½ pts</p>	<p>Line Betting Brisbane -7½ pts</p>
<p>Heritage Fund Bet WON 8.34% (8.03%)</p>	<p>Heritage Fund Bet LOST 9.79% (9.42%)</p>	<p>Heritage Fund Bet -</p>	<p>Heritage Fund Bet -</p>
<p>Alpha Fund Bet -</p>	<p>Alpha Fund Bet -</p>	<p>Alpha Fund Bet -</p>	<p>Alpha Fund Bet -</p>
<p>Beta Fund Bet -</p>	<p>Beta Fund Bet -</p>	<p>Beta Fund Bet -</p>	<p>Beta Fund Bet -</p>
<p>Line Fund Bet -</p>	<p>Line Fund Bet -</p>	<p>Line Fund Bet -</p>	<p>Line Fund Bet -</p>
<p>Bulldogs 12.13 (85) <i>drew with</i> St Kilda 12.13 (85)</p>	<p>Collingwood 18.12 (120) <i>def</i> Carlton 14.12 (96)</p>	<p>Geelong 21.13 (139) <i>def</i> Richmond 11.3 (69)</p>	<p>Brisbane 10.17 (77) <i>def</i> Kangaroos 5.10 (40)</p>
<p>Line Betting Bulldogs by 21½ pts</p>	<p>Line Betting Carlton by 8½ pts</p>	<p>Line Betting Geelong by 19½ pts</p>	<p>Line Betting Brisbane by 29½ pts</p>
 <p>Adelaide v Port Adelaide Football Park 4th August, 7:10pm</p>	 <p>Melbourne v Sydney Manuka Oval 5th August, 1:10pm</p>	 <p>Hawthorn v Essendon MCG 5th August, 2:10pm</p>	 <p>West Coast v Fremantle Subiaco 5th August, 2:40pm</p>
<p>Head-to-Head Ade \$2.48 / PA \$1.50 (Port Adelaide 60-67%)</p>	<p>Head-to-Head Mel \$7.25 / Syd \$1.07 (Sydney 86-94%)</p>	<p>Head-to-Head Haw \$1.80 / Ess \$1.94 (Hawthorn 49-56%)</p>	<p>Head-to-Head WC \$1.28 / Fre \$3.40 (West Coast 71-78%)</p>
<p>Line Betting Adelaide +11½ pts</p>	<p>Line Betting Melbourne +43½ pts</p>	<p>Line Betting Hawthorn -6½ pts</p>	<p>Line Betting West Coast -19½ pts</p>
<p>Heritage Fund Bet WON 2.67% (2.57%)</p>	<p>Heritage Fund Bet -</p>	<p>Heritage Fund Bet -</p>	<p>Heritage Fund Bet -</p>
<p>Alpha Fund Bet -</p>	<p>Alpha Fund Bet -</p>	<p>Alpha Fund Bet -</p>	<p>Alpha Fund Bet -</p>
<p>Beta Fund Bet WON 4.80% (6.68%)</p>	<p>Beta Fund Bet -</p>	<p>Beta Fund Bet WON 1.60% (2.23%)</p>	<p>Beta Fund Bet -</p>
<p>Line Fund Bet -</p>	<p>Line Fund Bet -</p>	<p>Line Fund Bet -</p>	<p>Line Fund Bet -</p>
<p>Adelaide 9.19 (73) <i>def</i> Port Adelaide 10.5 (65)</p>	<p>Sydney 17.10 (112) <i>def</i> Melbourne 9.10 (64)</p>	<p>Hawthorn 17.17 (119) <i>def</i> Essendon 7.14 (56)</p>	<p>Fremantle 19.10 (124) <i>def</i> West Coast 14.13 (97)</p>
<p>Line Betting Adelaide by 19½ pts</p>	<p>Line Betting Sydney by 4½ pts</p>	<p>Line Betting Hawthorn by 56½ pts</p>	<p>Line Betting Fremantle by 46½ pts</p>

- Five bets for four winners (though, sadly, not the Blues) – roughly 1½ to 2½% increase in Notional Initial Funds for all Investors except those employing Strategy D.

Good But Not Perfect

Had the Bulldogs hung on for another 3 seconds, or the Blues not raised draft-related suspicions by capitulating so pathetically in the final term, this would have been a truly memorable weekend indeed.

Instead, it was a mildly profitable weekend, reversing the trend of the past 4 weeks and driving most Investors back towards outright profitability.

I don't think I've explained this season what happens with head-to-head wagers in the event of a draw, such as was the case with our Bulldogs bet this weekend.

Quite simply, the payout is at one half of the price so, instead of getting back \$3.50 for every \$1 we invested (for a net \$2.50 profit), we got back \$1.75 for every \$1 invested (net \$0.75). In essence then, we made 30% ($\$0.75/\2.50) of the profit we would have made had the Dogs clung on. Still, a profit's a profit.

Here's the detail of the weekend:

Results of Round 18 Wagers

Heritage Fund		ROI		5.4%
	Bet*	Price	Net Return*	
Bulldogs	11.12%	\$3.50	8.3%	Draw
Carlton	9.79%	\$6.50	(9.8%)	Lost by 24 pts
Adelaide	1.80%	\$2.48	2.7%	Won by 8 pts
Total	22.7%		1.2%	

Beta Fund		ROI		122.0%
	Bet*	Price	Net Return*	
Adelaide	3.24%	\$2.48	4.8%	Won by 8 pts
Hawthorn	2.00%	\$1.80	1.6%	Won by 63 pts
Total	5.2%		6.4%	

Investor Returns			
	Bet*	Net Return*	ROI
Strategy A	6.38%	2.49%	38.96%
Strategy B	6.99%	1.91%	27.28%
Strategy C	8.39%	2.29%	27.28%
Strategy C+	14.15%	1.37%	9.71%
Strategy D	0.00%	0.00%	-
Strategy E	6.12%	2.17%	35.40%

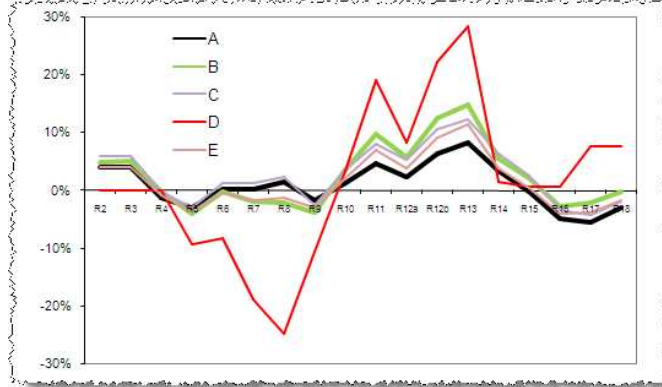
*all bets and net returns are calculated as a percentage of Notional Initial Funds

You'll notice that there's a new table amongst these results: the Investor Returns table at the bottom. The column headed 'Bet*' gives, for each Strategy, the percentage of Notional Initial Funds (NIF) that were at risk over the weekend; the column headed 'Net Return*' gives the net return (in terms of NIF), for each Strategy, on the weekend's wagers; and the column headed 'ROI' gives, for each Strategy, the Return on Investment (ie Net Return / Bet).

So, as you can see, no strategy made a loss this weekend, and most, in fact, made about a 1½ to 2½% Net Return on ROIs ranging between from around 10 to 40%.

All of which leaves the cumulative position looking thus:

Round-by-Round Performance of Major Strategies (all returns are as a % of Total Notional Initial Funds)



In numbers then, the current position looks like this:

Overall Fund Performance						
		Heritage	Alpha	Beta	Line	
Fund Return		+5.16%	+7.77%	(-21.71%)	+7.71%	
Joined [Swapped]	Strategy	Heritage	Alpha	Beta	Line	Overall Return
(Percentage in each Fund)						
Pre-Season	A*	20%	35%	35%	10%	(-3.07%)
Pre-Season	B	25%	25%	25%	25%	(-0.27%)
Pre-Season	C	30%	30%	30%	10%	(-1.86%)
Pre-Season	D	0%	0%	0%	100%	+7.71%
Pre-Season	E	20%	30%	30%	20%	(-1.61%)
Round 6	A*	20%	35%	35%	10%	(-0.31%)
Pre-Season [Round 7 & 10]	A ▶ C ▶ A	20%	35%	35%	10%	(-4.53%)
Pre-Season [Round 13]	C ▶ C+	60%	10%	10%	20%	(-8.18%)

* Recommended portfolio weightings

It's been a while since we took an extended look at the Fund-by-Fund, Round-by-Round picture, so here it is:

Round-by-Round, Fund-by-Fund Performance

	Heritage		Alpha		Beta		Line		Weighted**	
	Bet %*	Ret %	Bet %*	Ret %	Bet %*	Ret %	Bet %*	Ret %	Bet %*	Ret %
R2	29.47%	19.90%							5.89%	3.98%
R3	15.47%	0.15%							3.09%	0.03%
R4	13.75%	(13.75%)			7.04%	(7.04%)			5.21%	(5.21%)
R5	23.24%	(8.32%)	2.70%	2.32%			38.96%	(9.35%)	9.49%	(1.79%)
R6	20.90%	12.39%			2.00%	1.60%	13.68%	1.08%	6.25%	3.15%
R7	1.95%	1.60%	2.50%	1.00%	2.50%	1.00%	10.62%	(10.62%)	3.20%	(0.04%)
R8	11.24%	(1.57%)	8.98%	6.76%			5.89%	(5.89%)	5.98%	1.46%
R9	16.66%	(16.66%)	2.30%	(2.30%)	1.74%	(1.74%)	30.04%	14.24%	7.75%	(3.32%)
R10	23.42%	25.76%			10.05%	(10.05%)	15.57%	14.01%	9.76%	3.04%
R11	17.52%	10.22%			0.88%	(0.88%)	33.21%	15.60%	7.13%	3.29%
R12a	5.41%	(5.41%)					10.76%	(10.76%)	2.16%	(2.16%)
R12b	7.46%	13.05%					15.57%	14.01%	3.05%	4.01%
R13					5.91%	3.25%	23.33%	6.22%	4.40%	1.76%
R14	10.33%	(10.33%)					27.06%	(27.06%)	4.77%	(4.77%)
R15	16.78%	(6.62%)			6.25%	(6.25%)	15.56%	(0.78%)	7.10%	(3.59%)
R16	13.56%	(13.56%)			6.00%	(6.00%)			4.81%	(4.81%)
R17	30.85%	(2.92%)			2.00%	(2.00%)	7.78%	7.00%	7.65%	(0.59%)
R18	22.72%	1.22%			5.25%	6.40%			6.38%	2.49%
Total	280.72%	5.16%	16.49%	7.77%	49.62%	(21.71%)	248.03%	7.71%	104.08%	(3.07%)

* as a percentage of Notional Initial Funds

** based on Recommended Portfolio Weightings

As you can see, this weekend the Heritage Fund reversed a 4-week losing streak and the Beta Fund reversed a similar streak of one week's lesser duration. You can also see just how huffy the Alpha Fund's been since experiencing its first and only loss of the season way back in Round 9.

It's also been a while since we looked at the Team-by-Team, Fund-by-Fund view.

Looking first at the Heritage Fund, we find that Adelaide, the Roos and Hawthorn have been the sterling performers, delivering an aggregate RONF of over 50% on the back of 8 successful bets from 11.

Conversely, the Blues and the Tigers have been RONF destroyers, wiping off almost 40% of NIF in losing 13 from 17 bets. This weekend, of course, could have changed this picture dramatically for the Blues.

For the Alpha Fund, nothing's changed since last we looked: Sydney are the Fund's best performer and Melbourne its poorest.

Team-by-Team, Fund-by-Fund Performance

HERITAGE FUND							ALPHA FUND						
	Bets	Win	Loss	% Outlayed	ROI	% RONF		Bets	Win	Loss	% Outlayed	ROI	% RONF
Adelaide	2	2	0	11.6%	174.5%	20.2%	Adelaide	0	0	0	0.0%	0.0%	0.0%
Brisbane Lions	2	1	1	6.7%	26.3%	2.2%	Brisbane Lions	0	0	0	0.0%	0.0%	0.0%
Carlton	11	3	8	60.5%	(26.0%)	(14.1%)	Carlton	0	0	0	0.0%	0.0%	0.0%
Collingwood	2	1	1	10.9%	27.6%	4.0%	Collingwood	1	1	0	2.5%	40.0%	1.0%
Essendon	4	2	2	24.9%	7.8%	2.0%	Essendon	0	0	0	0.0%	0.0%	0.0%
Fremantle	2	0	2	4.7%	(100.0%)	(3.4%)	Fremantle	1	1	0	2.7%	86.0%	2.3%
Geelong	0	0	0	0.0%	0.0%	0.0%	Geelong	0	0	0	0.0%	0.0%	0.0%
Hawthorn	5	3	2	24.0%	58.2%	13.3%	Hawthorn	1	1	0	1.7%	120.0%	2.0%
Kangaroos	4	3	1	20.0%	94.1%	18.1%	Kangaroos	0	0	0	0.0%	0.0%	0.0%
Melbourne	6	2	4	35.1%	(7.3%)	(3.8%)	Melbourne	1	0	1	2.3%	(100.0%)	(2.3%)
Port Adelaide	0	0	0	0.0%	0.0%	0.0%	Port Adelaide	0	0	0	0.0%	0.0%	0.0%
Richmond	6	1	5	46.0%	(53.4%)	(25.5%)	Richmond	0	0	0	0.0%	0.0%	0.0%
St Kilda	2	1	1	10.8%	(5.6%)	(0.6%)	St Kilda	0	0	0	0.0%	0.0%	0.0%
Sydney	0	0	0	0.0%	0.0%	0.0%	Sydney	1	1	0	7.3%	65.0%	4.8%
West Coast	0	0	0	0.0%	0.0%	0.0%	West Coast	0	0	0	0.0%	0.0%	0.0%
Western Bulldogs	3	0.5	2.5	25.5%	(23.6%)	(6.0%)	Bulldogs	0	0	0	0.0%	0.0%	0.0%
Total	49	19.5	29.5	280.7%	1.4%	5.2%	Total	5	4	1	16.5%	46.7%	7.8%

Adelaide has now grabbed top honours for the Beta Fund, and is one of only three teams showing positive returns for the Fund, the others being Essendon and Hawthorn. Eight teams show negative returns for the Fund, worst amongst them Freo, Port and the Tigers.

The Line Fund's hero teams are the Roos and Melbourne, with honourable mentions for the Crows, Pies and Tigers. Chief value destroyers have been the Dons, Freo and the Saints.

BETA FUND							LINE FUND						
	Bets	Win	Loss	% Outlayed	ROI	% RONF		Bets	Win	Loss	% Outlayed	ROI	% RONF
Adelaide	1	1	0	3.2%	148.0%	4.8%	Adelaide	1	1	0	7.8%	90.0%	7.0%
Brisbane Lions	2	1	1	3.7%	(2.8%)	(0.1%)	Brisbane Lions	1	0	1	7.0%	(100.0%)	(7.0%)
Carlton	0	0	0	0.0%	0.0%	0.0%	Carlton	5	3	2	34.0%	13.5%	4.6%
Collingwood	2	1	1	5.4%	(32.1%)	(1.9%)	Collingwood	3	2	1	21.5%	35.6%	8.1%
Essendon	1	1	0	5.9%	55.0%	3.3%	Essendon	3	0	3	15.8%	(100.0%)	(15.8%)
Fremantle	2	0	2	8.3%	(100.0%)	(8.3%)	Fremantle	2	0	2	13.7%	(200.0%)	(13.7%)
Geelong	0	0	0	0.0%	0.0%	0.0%	Geelong	0	0	0	0.0%	0.0%	0.0%
Hawthorn	1	1	0	2.0%	80.0%	1.6%	Hawthorn	3	1	2	23.3%	(35.1%)	(8.6%)
Kangaroos	0	0	0	0.0%	0.0%	0.0%	Kangaroos	3	3	0	23.3%	90.0%	21.0%
Melbourne	1	0	1	4.1%	(100.0%)	(4.1%)	Melbourne	5	4	1	38.9%	55.6%	20.2%
Port Adelaide	1	0	1	8.3%	(100.0%)	(8.3%)	Port Adelaide	0	0	0	0.0%	0.0%	0.0%
Richmond	1	0	1	6.0%	(100.0%)	(6.0%)	Richmond	3	2	1	23.3%	26.5%	6.2%
St Kilda	1	0	1	0.9%	(100.0%)	(0.9%)	St Kilda	2	0	2	13.7%	(200.0%)	(13.7%)
Sydney	1	0	1	1.7%	(100.0%)	(1.7%)	Sydney	1	1	0	5.6%	82.0%	4.6%
West Coast	0	0	0	0.0%	0.0%	0.0%	West Coast	2	1	1	13.4%	10.4%	1.4%
Bulldogs	0	0	0	0.0%	0.0%	0.0%	Bulldogs	1	0	1	6.7%	(100.0%)	(6.7%)
Total	14	5	9	49.6%	(43.0%)	(21.7%)	Total	35	18	17	248.1%	3.6%	7.7%

Overall, Geelong remains the only team on which every Fund has yet to wager. Carlton, in contrast, is the team on which most wagers have been made across the Funds: they've been the subject of 16 wagers, registering 6 wins and 10 losses, this representing a net 2.4% loss for Investors following Strategy A.

Across all Funds we've now made 103 bets for 47 winners and 56 losses. (Since we actually made money on the Bulldogs' draw, I've recorded it as a winning bet).

- **BKB pulls one clear of MM16, with Chi now 5 back from MM16.**

BKB Retakes the Lead

A slightly tougher round to tip this week, partly because the Dogs v Saints draw capped the maximum possible score at 7½ and partly because of the upset Freo, Adelaide and (to some tipsters) Lions victories. The average score per tipster was just 4.83, about 0.6 tips less than last week.

Here's the detail:

Tips from all the Tipping Models (see Appendix for each Model's strategy)

Tipping	WB v STK	Car v Col	Gee v Ric	Bri v Kan	Ade v PA	Mel v Syd	Haw v Ess	WC v Fre	This Rnd
CTM	StK by 20	Col by 13	Gee by 24	Bri by 15	PA by 12	Syd by 8	Haw by 12	WC by 3	5.5
QTM	StK by 19	Col by 12	Gee by 26	Bri by 16	PA by 9	Syd by 3	Haw by 21	WC by 4	5.5
BKB	StK by 21½	Col by 32½	Gee by 50½	Bri by 7½	PA by 11½	Syd by 43½	Haw by 6½	WC by 19½	5.5
CTL	St Kilda	Collingwood	Geelong	Kangaroos	Port Adelaide	Sydney	Hawthorn	West Coast	4.5
MM2	St Kilda	Collingwood	Geelong	Brisbane Lions	Port Adelaide	Sydney	Essendon	West Coast	5.5
MM4	St Kilda	Collingwood	Geelong	Brisbane Lions	Port Adelaide	Sydney	Hawthorn	West Coast	5.5
MM6	St Kilda	Collingwood	Geelong	Kangaroos	Port Adelaide	Sydney	Hawthorn	West Coast	4.5
MM8	St Kilda	Collingwood	Geelong	Kangaroos	Port Adelaide	Sydney	Hawthorn	West Coast	4.5
MM11	St Kilda	Collingwood	Geelong	Kangaroos	Port Adelaide	Sydney	Hawthorn	West Coast	4.5
MM16	St Kilda	Collingwood	Geelong	Kangaroos	Port Adelaide	Sydney	Hawthorn	West Coast	4.5
MM22	St Kilda	Collingwood	Geelong	Kangaroos	Port Adelaide	Sydney	Hawthorn	West Coast	4.5
NIT	St Kilda (11-0)	Collingwood (11-0)	Geelong (11-0)	Kangaroos (6-5)	Port Adelaide (11-0)	Sydney (11-0)	Hawthorn (10-1)	West Coast (11-0)	4.5
Line Betting									
Chi	Western Bulldogs	Carlton	Richmond	Brisbane Lions	Port Adelaide	Melbourne	Hawthorn	Fremantle	5
Quila	Western Bulldogs	Carlton	Richmond	Brisbane Lions	Adelaide	Melbourne	Hawthorn	Fremantle	6

Chi and Quila have both finally turned in a better-than-random result on Line Betting, with Chi bagging 6 and Quila 5, though this still leaves them at just 44% and 42% respectively for the season.

This week I thought I'd show the extended Tipsters' League Table, showing all the MMx Strategies.

Cumulative Tipping Results (Extended List)

	Cum	% Correct	Av Pred Err
MM15	94	65.3%	-
BKB	94	65.3%	29.22
MM16	93	64.6%	-
MM14	91	63.2%	-
MM13	88	61.1%	-
CTM	88	61.1%	30.70
MM7	87	60.4%	-
MM12	87	60.4%	-
MM18	87	60.4%	-
MM21	87	60.4%	-
MM4	86	59.7%	-
MM9	86	59.7%	-
MM17	86	59.7%	-
MM4	85	59.0%	-
MM20	85	59.0%	-
MM8	84	58.3%	-
MM11	84	58.3%	-
MM10	84	58.3%	-
MM19	84	58.3%	-
MM22	83	57.6%	-
CTL	82	56.9%	-
NIT	82	56.9%	-
MM6	82	56.9%	-
MM5	81	56.3%	-
MM3	80	55.6%	-
QTM	79	54.9%	32.18
MM2	73	50.7%	-

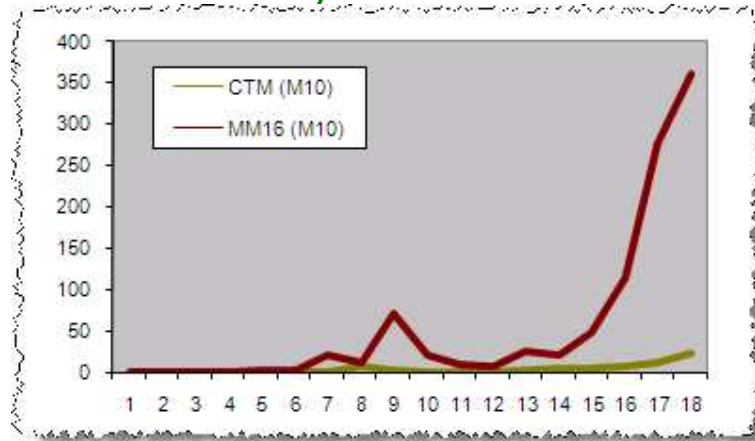
As you can see, MM15 leads jointly with BKB, followed by MM16, then MM14 and MM13, tied with Chi. It's interesting to note how well MM4 does given the relatively poor showings of MM2, MM3, MM5 and MM6.

(By the way, the records of the three strategies that we introduced in the previous newsletter now stand at 97 (Strategy A), 100 (Strategy B), and 101 (Strategy C)).

Monkey Update

Chi and MM16, with their scores of 5½ and 4½ respectively, have both leapt to season-high M10 scores. Chi's is now at 23, while MM16's is at 361. (MM15's and BKB's M10 scores are 685).

Round-by-Round M10 Scores



The Alternative Premierships

You do just have to marvel at the Cats' performance this year. So far, they have:

- Led at quarter-time in 16 of 18 games
- Led at half-time in 15 games and been tied once
- Led at three-quarter-time in 16 of 18 games
- Won 15 of 18 games, including the last 13 in a row
- Won 16 first quarters
- Won 12 second quarters
- Won 14 third quarters
- Won 12 and tied 1 fourth quarter

No other team has a record anywhere near as impressive. Whilst the Roos have had their noses in front at the end of almost as many quarters, they've done nowhere near as well during each term, winning only 9 (and drawing 1) 2nd quarters, winning 11 (and drawing 1) 3rd quarters, and winning just 6 (and drawing 1) final terms.

End of 1st Quarter Premiership			End of 2nd Quarter Premiership			End of 3rd Quarter Premiership			End of 4th Quarter Premiership		
Team	Pts	%	Team	Pts	%	Team	Pts	%	Team	Pts	%
Geelong	64	190.6	Geelong	62	172.4	Geelong	64	164.1	Geelong	60	160.4
Kangaroos	56	133.6	Kangaroos	52	117.7	Kangaroos	52	121.2	Kangaroos	48	105.2
Adelaide	48	122.3	West Coast	48	119.6	West Coast	48	108.4	Hawthorn	44	114.4
West Coast	44	116.6	Port Adelaide	44	109.8	Port Adelaide	44	121.5	Port Adelaide	44	112.6
Essendon	44	104.5	Sydney	42	103.9	St Kilda	44	101.5	West Coast	44	110.7
Port Adelaide	40	117.4	Adelaide	40	111.8	Brisbane Lions	40	114.1	Collingwood	44	101.3
Brisbane Lions	36	113.3	Hawthorn	40	97.5	Sydney	40	106.7	Sydney	40	119.2
Carlton	36	94.4	Collingwood	38	99.3	Hawthorn	40	105.2	Brisbane Lions	38	113.1
Sydney	32	95.3	St Kilda	36	99.9	Western Bulldogs	36	90.5	St Kilda	38	94.8
Collingwood	30	82.6	Fremantle	34	104.1	Collingwood	34	97.0	Western Bulldogs	38	93.0
Fremantle	28	95.0	Brisbane Lions	32	110.2	Adelaide	32	104.8	Adelaide	36	108.8
Hawthorn	28	93.7	Essendon	28	90.5	Fremantle	32	99.2	Essendon	36	93.6
Richmond	26	80.9	Western Bulldogs	28	90.0	Essendon	20	91.5	Fremantle	32	99.8
Western Bulldogs	22	85.7	Richmond	24	80.4	Carlton	20	80.9	Carlton	16	74.8
St Kilda	22	80.7	Carlton	16	79.1	Melbourne	16	67.4	Melbourne	12	73.4
Melbourne	20	58.6	Melbourne	12	64.0	Richmond	14	73.8	Richmond	6	72.5

During 1st Quarter Premiership			During 2nd Quarter Premiership			During 3rd Quarter Premiership			During 4th Quarter Premiership		
Team	Pts	%	Team	Pts	%	Team	Pts	%	Team	Pts	%
Geelong	64	190.6	Collingwood	54	119.5	Geelong	56	147.8	Hawthorn	58	146.3
Kangaroos	56	133.6	St Kilda	50	127.7	Port Adelaide	52	149.0	Sydney	50	165.9
Adelaide	48	122.3	Geelong	48	154.9	Brisbane Lions	48	122.0	Geelong	50	150.3
West Coast	44	116.6	West Coast	44	122.8	Kangaroos	46	129.1	Essendon	44	100.2
Essendon	44	104.5	Fremantle	40	116.0	Sydney	42	112.7	Adelaide	40	123.3
Port Adelaide	40	117.4	Sydney	40	113.9	St Kilda	40	104.9	Melbourne	40	93.7
Brisbane Lions	36	113.3	Adelaide	40	101.7	West Coast	38	89.9	West Coast	38	117.8
Carlton	36	94.4	Brisbane Lions	38	106.9	Hawthorn	36	121.0	Fremantle	38	101.5
Sydney	32	95.3	Kangaroos	38	103.4	Essendon	36	93.5	Collingwood	36	117.2
Collingwood	30	82.6	Western Bulldogs	38	96.1	Collingwood	32	92.3	Brisbane Lions	36	109.9
Fremantle	28	95.0	Port Adelaide	34	102.3	Fremantle	30	91.4	Western Bulldogs	36	100.6
Hawthorn	28	93.7	Richmond	32	79.8	Western Bulldogs	28	91.8	Port Adelaide	34	88.5
Richmond	26	80.9	Hawthorn	28	101.0	Carlton	28	84.4	St Kilda	26	76.9
Western Bulldogs	22	85.7	Melbourne	22	69.7	Melbourne	28	74.9	Kangaroos	26	74.7
St Kilda	22	80.7	Carlton	18	64.6	Adelaide	22	92.0	Richmond	16	69.1
Melbourne	20	58.6	Essendon	12	79.6	Richmond	14	62.5	Carlton	8	59.0

This week was a bit unusual in that only 3 of the winning teams won their 3rd quarter.

Here’s the summary performance of the winning teams (ignoring the Bulldogs v Saints drawn game):

- 1st Quarter: Won 5, Lost 2
- 2nd Quarter: Won 5, Drew 1, Lost 1
- 3rd Quarter: Won 3, Lost 4
- 4th Quarter: Won 6, Lost 1

The final term was far more important than the 3rd this week, perhaps not completely surprisingly as, in six of the games, the margin at the final change was just 25 points or fewer.

~*

Finally, here’s a look at the current table, along with the winning and losing streaks of each team. Interesting to note that only the Cats, the Lions and, to a lesser extent, the Saints, have any significant momentum heading into Round 19.

Team	Pts	%	GF	BF	PF	Ace %	Rank	GA	BA	PA	1	2	3	4	5	6	7	8	9	10	11	12	13	14	15	16	17	18
Geelong	60	160.4	301	269	2,075	52.8%	8	186	178	1,294	L	W	W	L	L	W	W	W	W	W	W	W	W	W	W	W	W	W
Kangaroos	48	105.2	239	238	1,672	50.1%	12	226	233	1,589	L	L	L	W	W	W	W	W	W	W	W	W	W	W	W	W	W	L
Hawthorn	44	114.4	244	216	1,680	53.0%	7	209	215	1,469	L	W	W	W	W	W	W	W	W	W	W	W	W	W	W	W	L	L
Port Adelaide	44	112.6	275	238	1,888	53.6%	5	242	225	1,677	W	W	W	W	W	W	W	W	W	L	L	L	L	W	W	W	W	W
West Coast	44	110.7	241	242	1,688	49.9%	13	221	199	1,525	W	W	W	W	W	W	W	W	W	W	W	W	W	W	L	L	L	L
Collingwood	44	101.3	233	260	1,658	47.3%	16	236	220	1,636	W	L	W	L	W	W	W	L	L	W	W	W	L	L	L	L	L	L
Sydney	40	119.2	244	205	1,669	54.3%	2	203	182	1,400	L	W	L	W	L	L	W	W	W	W	W	W	W	W	W	W	W	W
Brisbane Lions	38	113.1	238	241	1,669	49.7%	14	207	234	1,476	W	W	W	W	W	W	W	W	W	L	L	L	L	L	L	L	L	L
St Kilda	38	94.8	211	217	1,483	49.3%	15	227	203	1,565	W	L	W	L	L	W	W	L	L	L	L	L	L	L	L	L	L	L
Western Bulldogs	38	93.0	261	225	1,791	53.7%	4	279	251	1,925	W	L	L	W	L	L	W	W	W	W	W	W	W	W	W	W	W	L
Adelaide	36	108.8	219	210	1,524	51.0%	11	199	207	1,401	W	W	W	W	L	L	W	W	W	W	W	W	W	W	W	W	L	L
Essendon	36	93.6	259	219	1,773	54.2%	3	276	239	1,895	W	L	W	L	L	W	W	W	W	W	W	W	W	W	W	W	W	L
Fremantle	32	99.8	264	205	1,789	56.3%	1	258	245	1,793	L	L	L	W	W	W	W	W	W	W	W	W	W	W	W	W	W	W
Carlton	16	74.8	256	243	1,779	51.3%	10	353	259	2,377	W	L	L	L	L	L	L	L	L	L	L	L	L	L	L	L	L	L
Melbourne	12	73.4	212	195	1,467	52.1%	9	289	264	1,998	L	L	L	L	L	L	L	L	L	L	L	L	L	L	L	L	L	L
Richmond	6	72.5	225	195	1,545	53.6%	6	311	264	2,130	L	L	L	L	L	L	L	L	L	L	L	D	L	W	L	L	L	L

‘til Thursday then.

Appendix

Tipping Model Strategies

Strategy Name	Basis for Tips
Chi Tipping Model (CTM)	Complex statistical model incorporating a range of factors.
Quila Tipping Model (QTM)	Uses an approach similar to that used for the CTM.
Bookies Know Best (BKB)	For each game, tips the TAB Sportsbet favourite. In the case of equal favourites, it tips the true home team or, if there's no true home team, tips the team with the higher ladder position (ties are broken using percentage then for-and-against margin).
Consult The Ladder (CTL)	Tips the team with the higher ladder position (ties are broken using percentage then for-and-against margin). For the first round of the season, use the ladder position at the end of the previous regular season.
Momentum Matters (MMx)	A series of strategies that involve building competition ladders based only on the results of the most recent x rounds of regular season games (drawing on games from the previous season if required). The MM2 strategy considers only the last 2 regular season rounds, the MM4 strategy only the last 4 rounds, and so on. Once a ladder has been built for a strategy, the selected team is that with the superior ladder position (as per CTL above). This year we'll track the performance of MM2, MM4, MM6, MM8, MM11, MM16 and MM22.
No Independent Thought (NIT)	Tips the team that is most popular amongst all other strategies.

Notional Initial Funds

For reasons that are somewhat technical (I'm happy to provide details to anyone who's interested but, broadly, it allows me to describe bets in terms of a common percentage for all Investors and still maintain the same share price for all Investors), I need to calculate what I call "Notional Initial Funds". It's calculated separately for each Fund.

For original Investors, the definition is straightforward:

$$\text{Notional Initial Funds} = \text{Actual Funds Invested}$$

For Investors who join the Fund post Round 1:

$$\text{Notional Initial Funds} = \text{Actual Funds Invested} / \text{Share Price at the time of investing}$$

(in other words, it's the notional amount that would need to have been invested at the start of the season in order to have returned an amount equal to the amount actually invested).

5 August 2007