



MAFL Funds : Season 2007

Where Statistics Meets Leather and Grass

29 July 2007

Season 2007, Number 17.1

In this Edition of the newsletter:

- Results of wagers and tips for Round 17
- Monkey Update
- The Alternative Premierships

Lions Awake

 <p>Bulldogs v West Coast Telstra Dome 27th July, 7:40pm</p>	 <p>Carlton v St Kilda Telstra Dome 28th July, 2:10pm</p>	 <p>Fremantle v Geelong Subiaco 28th July, 2:10pm</p>	 <p>Collingwood v Brisbane Lions MCG 28th July, 7:10pm</p>
<p>Head-to-Head WB \$3.45 / WC \$1.28 (West Coast 71-78%)</p>	<p>Head-to-Head Car \$6.25 / StK \$1.10 (St Kilda 84-91%)</p>	<p>Head-to-Head Fre \$2.25 / Gee \$1.60 (Geelong 56-63%)</p>	<p>Head-to-Head Col \$1.32 / Bri \$3.20 (Collingwood 69-76%)</p>
<p>Line Betting Bulldogs +21½ pts</p>	<p>Line Betting Carlton +42½ pts</p>	<p>Line Betting Fremantle +8½ pts</p>	<p>Line Betting Collingwood -20½ pts</p>
<p>Heritage Fund Bet LOST 7.77% (7.27%)</p>	<p>Heritage Fund Bet LOST 8.94% (8.37%)</p>	<p>Heritage Fund Bet LOST 1.56% (1.46%)</p>	<p>Heritage Fund Bet -</p>
<p>Alpha Fund Bet -</p>	<p>Alpha Fund Bet -</p>	<p>Alpha Fund Bet -</p>	<p>Alpha Fund Bet -</p>
<p>Beta Fund Bet -</p>	<p>Beta Fund Bet -</p>	<p>Beta Fund Bet LOST 2.00% (2.71%)</p>	<p>Beta Fund Bet -</p>
<p>Line Fund Bet -</p>	<p>Line Fund Bet -</p>	<p>Line Fund Bet -</p>	<p>Line Fund Bet -</p>
<p>West Coast 24.14 (158) <i>def</i></p>	<p>St Kilda 16.15 (111) <i>def</i></p>	<p>Geelong 20.20 (140) <i>def</i></p>	<p>Brisbane 22.17 (149) <i>def</i></p>
<p>Bulldogs 9.17 (71)</p>	<p>Carlton 15.11 (101)</p>	<p>Fremantle 10.12 (72)</p>	<p>Collingwood 7.14 (56)</p>
<p>Line Betting West Coast by 65½ pts</p>	<p>Line Betting Carlton by 32½ pts</p>	<p>Line Betting Geelong by 59½ pts</p>	<p>Line Betting Brisbane by 113½ pts</p>
 <p>Sydney v Richmond SCG 28th July, 7:10pm</p>	 <p>Hawthorn v Kangaroos Aurora Stadium 29th July, 1:10pm</p>	 <p>Essendon v Adelaide MCG 29th July, 2:10pm</p>	 <p>Port Adelaide v Melbourne Football Park 29th July, 4:10pm</p>
<p>Head-to-Head Syd \$1.10 / Ric \$6.25 (Sydney 84-91%)</p>	<p>Head-to-Head Haw \$1.62 / Kan \$2.20 (Hawthorn 55-62%)</p>	<p>Head-to-Head Ess \$2.25 / Ade \$1.60 (Adelaide 56-63%)</p>	<p>Head-to-Head PA \$1.11 / Mel \$6.00 (Port Adelaide 83-90%)</p>
<p>Line Betting Sydney -39½ pts</p>	<p>Line Betting Hawthorn -7½ pts</p>	<p>Line Betting Essendon +7½ pts</p>	<p>Line Betting Port Adelaide -39½ pts</p>
<p>Heritage Fund Bet -</p>	<p>Heritage Fund Bet WON 8.60% (8.05%)</p>	<p>Heritage Fund Bet WON 6.75% (6.32%)</p>	<p>Heritage Fund Bet -</p>
<p>Alpha Fund Bet -</p>	<p>Alpha Fund Bet -</p>	<p>Alpha Fund Bet -</p>	<p>Alpha Fund Bet -</p>
<p>Beta Fund Bet -</p>	<p>Beta Fund Bet -</p>	<p>Beta Fund Bet -</p>	<p>Beta Fund Bet -</p>
<p>Line Fund Bet -</p>	<p>Line Fund Bet WON 7.00% (6.95%)</p>	<p>Line Fund Bet -</p>	<p>Line Fund Bet -</p>
<p>Sydney 21.12 (138) <i>def</i></p>	<p>Kangaroos 16.12 (108) <i>def</i></p>	<p>Essendon 18.9 (117) <i>def</i></p>	<p>Pt Adelaide 25.13 (163) <i>def</i></p>
<p>Richmond 10.12 (72)</p>	<p>Hawthorn 10.11 (71)</p>	<p>Adelaide 16.9 (102)</p>	<p>Melbourne 11.8 (74)</p>
<p>Line Betting Sydney by 26½ pts</p>	<p>Line Betting Kangaroos by 44½ pts</p>	<p>Line Betting Essendon by 22½ pts</p>	<p>Line Betting Port Adelaide by 49½ pts</p>

- Seven bets for three wins; a small loss for some, and small to medium gains for others

Redemptive Sunday

This weekend started badly, with the Bulldogs surrendering on Friday night yet again, taking a hefty chunk of our Heritage Funds with them. Then, Saturday, the Blues got far closer than a team at \$6.25 - \$7 in some quarters - deserved to, finishing an agonizing 2 goals short of springing the upset that would've been oh so lucrative for many Investors.

Next, Fremantle capitulated against the Cats, and the weekend looked exceedingly bleak.

Come Sunday then and it was all up to the Roos and the Dons. And, they delivered, erasing most of Friday's and Saturday's losses for Investors following Strategies A and C, and springing profits for those with Strategies B, D and E.

So, not a season-defining round as I'd suggested, but instead a round where most of us risked a lot, some of us lost a little and some of us won a little.

Here's the detail:

Result of Round 17 Wagers

Heritage Fund		ROI		
	Bet*	Price	Net Return*	
Bulldogs	7.77%	\$3.45	(7.8%)	Lost by 87 pts
Carlton	8.94%	\$6.25	(8.9%)	Lost by 10 pts
Fremantle	1.56%	\$2.25	(1.6%)	Lost by 68 pts
Kangaroos	7.17%	\$2.20	8.6%	Won by 37 pts
Essendon	5.40%	\$2.25	6.8%	Won by 12 pts
Total	30.8%		(2.9%)	

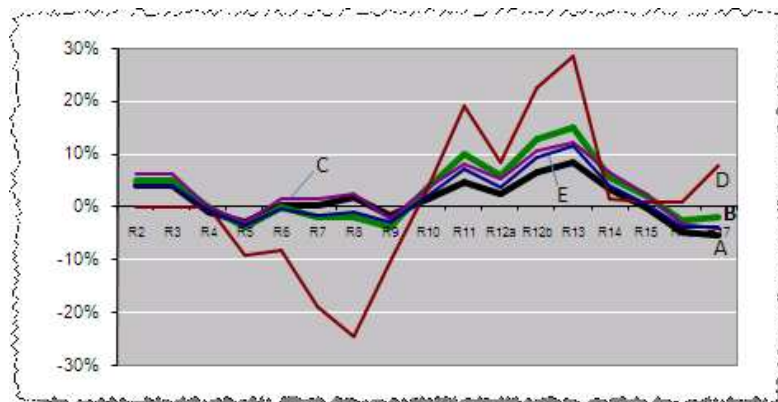
Beta Fund		ROI		
	Bet*	Price	Net Return*	
Fremantle	2.00%	\$2.25	(2.0%)	Lost by 68 pts
Total	2.0%		(2.0%)	

Line Fund		ROI		
	Bet*	Price	Net Return*	
Kangaroos	7.78%	\$1.90	7.0%	Won by 44½ pts
Total	7.8%		7.0%	

* all bets and net returns are calculated as a percentage of Notional Initial Funds

Which means that, at least, the bleeding appears to have been staunched for most strategies (indeed, the patient's showing signs of recovery in a few cases):

Round-by-Round Performance of Major Strategies (all returns are as a % of Total Notional Initial Funds)



Numerically, here's how that all looks:

Overall Fund Performance						
		Heritage	Alpha	Beta	Line	
Fund Return		+3.94%	+7.77%	(-28.11%)	+7.71%	
Joined [Swapped]	Strategy	Heritage	Alpha	Beta	Line	Overall Return
(Percentage in each Fund)						
Pre-Season	A*	20%	35%	35%	10%	(-5.56%)
Pre-Season	B	25%	25%	25%	25%	(-2.17%)
Pre-Season	C	30%	30%	30%	10%	(-4.15%)
Pre-Season	D	0%	0%	0%	100%	+7.71%
Pre-Season	E	20%	30%	30%	20%	(-3.77%)
Round 6	A*	20%	35%	35%	10%	(-2.97%)
Pre-Season [Round 7 & 10]	A ▶ C ▶ A	20%	35%	35%	10%	(-7.09%)
Pre-Season [Round 13]	C ▶ C+	60%	10%	10%	20%	(-9.63%)

* Recommended portfolio weightings

- MM16 rejoins the lead; Chi trails by 6

Another Good Round For Tipsters

Another solid week's tipping for our tipsters, with the weekend average of 5.42 the third highest of the season. Top score for the week was 6.

Three results hurt a number of tipsters: the Eagles' win over the Dogs, the Lions' win over the Pies, and the Dons' win over the Crows. A few more were hurt by the Roos' win over the Hawks.

Here's the detail:

Tips from all the Tipping Models (see Appendix for each Model's strategy)

Tipping	WB v WC	Car v StK	Fre v Gee	Col v Bri	Syd v Ric	Haw v Kan	Ess v Ade	PA v Mel	This Rnd
CTM	WC by 2	StK by 8	Gee by 9	Col by 14	Syd by 28	Haw by 14	Ade by 9	PA by 29	5
QTM	WB by 1	StK by 20	Gee by 10	Col by 11	Syd by 25	Haw by 9	Ade by 17	PA by 28	4
BKB	WC by 21%	StK by 42%	Gee by 8%	Col by 20%	Syd by 39%	Haw by 7%	Ade by 7%	PA by 39%	5
CTL	West Coast	St Kilda	Geelong	Collingwood	Sydney	Kangaroos	Adelaide	Port Adelaide	6
MM2	Western Bulldogs	St Kilda	Geelong	Brisbane	Sydney	Kangaroos	Adelaide	Port Adelaide	6
MM4	Western Bulldogs	St Kilda	Geelong	Brisbane	Sydney	Kangaroos	Adelaide	Port Adelaide	6
MM6	Western Bulldogs	St Kilda	Geelong	Brisbane	Sydney	Kangaroos	Adelaide	Port Adelaide	6
MM8	Western Bulldogs	St Kilda	Geelong	Collingwood	Sydney	Kangaroos	Essendon	Port Adelaide	6
MM11	Western Bulldogs	St Kilda	Geelong	Collingwood	Sydney	Kangaroos	Adelaide	Port Adelaide	5
MM16	West Coast	St Kilda	Geelong	Collingwood	Sydney	Kangaroos	Adelaide	Port Adelaide	6
MM22	West Coast	St Kilda	Geelong	Collingwood	Sydney	Hawthorn	Adelaide	Port Adelaide	5
NIT	Western Bulldogs (6-5)	St Kilda (11-0)	Geelong (11-0)	Collingwood (8-3)	Sydney (11-0)	Kangaroos (7-4)	Adelaide (10-1)	Port Adelaide (11-0)	5
Line Betting									
Chi	Western Bulldogs	Carlton	Geelong	Brisbane Lions	Richmond	Hawthorn	Adelaide	Melbourne	3
Quila	Western Bulldogs	Carlton	Geelong	Brisbane Lions	Richmond	Hawthorn	Adelaide	Melbourne	3

So, MM16 pulls one back on BKB to rejoin the lead. Chi sits 6 behind them both.

Cumulative Tipping Results

	Cum	% Correct	Av Pred Err
BKB	88.5	65.1%	29.42
MM16	88.5	65.1%	-
CTM	82.5	60.7%	30.74
MM4	80.5	59.2%	-
MM8	79.5	58.5%	-
MM11	79.5	58.5%	-
CTL	77.5	57.0%	-
MM22	77.5	57.0%	-
NIT	77.5	57.0%	-
MM6	76.5	56.3%	-
QTM	73.5	54.0%	32.38
MM2	68.5	50.4%	-

It's been a while since we took a look at how level-staking MM16's tips would've fared. (In other words, if we'd bet \$1 with Sportsbet on each of MM16's tips, how would we have performed?)

Here's the story:

MM16: Round-by-Round Level-Staking Performance

MM16 - Level Staking Performance				
	Wins	Return	Cum Ret	Cum ROI
Round 1	5	\$1.64	\$1.64	20.5%
Round 2	5	\$0.14	\$1.78	11.1%
Round 3	6	\$2.00	\$3.78	15.8%
Round 4	6	\$0.98	\$4.76	14.9%
Round 5	4	\$0.68	\$5.44	13.6%
Round 6	5	\$0.62	\$6.06	12.6%
Round 7	7	\$3.01	\$9.07	16.2%
Round 8	4	(\$2.55)	\$6.52	10.2%
Round 9	7	\$3.24	\$9.76	13.6%
Round 10	3.5	(\$2.50)	\$7.26	9.1%
Round 11	3	(\$3.37)	\$3.89	4.4%
Round 12	4	(\$0.70)	\$3.19	3.3%
Round 13	7	\$3.18	\$6.37	6.1%
Round 14	4	(\$1.69)	\$4.68	4.2%
Round 15	6	\$1.56	\$6.24	5.2%
Round 16	6	\$0.15	\$6.39	5.0%
Round 17	6	\$0.39	\$6.78	5.0%

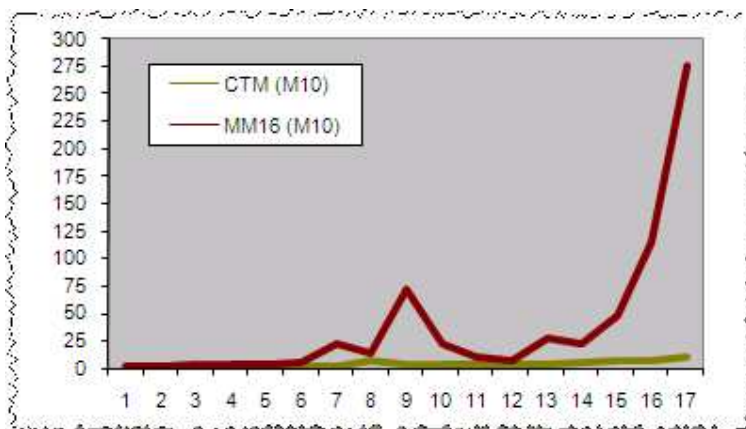
So, despite some unpleasantness in five of the seven rounds between Round 8 and Round 14, we'd still find ourselves comfortably profitable, having made 6.78 times whatever our staking unit was, this representing a 5% ROI.

Interestingly, it seems that, whenever MM16 tips at better than chance it makes money. I smell a 2008 MAFL Fund in the making.

Monkey Update

Inch-by-inch, round-by-round, Chi climbs the evolutionary ladder.

Round-by-Round M10 Scores for MM16 and Chi



Chi's M10 score is now at 11, up three on last week and up 9 on the last 5 weeks. MM16's M10 score is at 276 this week up 162.

Appendix

Tipping Model Strategies

Strategy Name	Basis for Tips
Chi Tipping Model (CTM)	Complex statistical model incorporating a range of factors.
Quila Tipping Model (QTM)	Uses an approach similar to that used for the CTM.
Bookies Know Best (BKB)	For each game, tips the TAB Sportsbet favourite. In the case of equal favourites, it tips the true home team or, if there's no true home team, tips the team with the higher ladder position (ties are broken using percentage then for-and-against margin).
Consult The Ladder (CTL)	Tips the team with the higher ladder position (ties are broken using percentage then for-and-against margin). For the first round of the season, use the ladder position at the end of the previous regular season.
Momentum Matters (MMx)	A series of strategies that involve building competition ladders based only on the results of the most recent x rounds of regular season games (drawing on games from the previous season if required). The MM2 strategy considers only the last 2 regular season rounds, the MM4 strategy only the last 4 rounds, and so on. Once a ladder has been built for a strategy, the selected team is that with the superior ladder position (as per CTL above). This year we'll track the performance of MM2, MM4, MM6, MM8, MM11, MM16 and MM22.
No Independent Thought (NIT)	Tips the team that is most popular amongst all other strategies.

Notional Initial Funds

For reasons that are somewhat technical (I'm happy to provide details to anyone who's interested but, broadly, it allows me to describe bets in terms of a common percentage for all Investors and still maintain the same share price for all Investors), I need to calculate what I call "Notional Initial Funds". It's calculated separately for each Fund.

For original Investors, the definition is straightforward:

$$\text{Notional Initial Funds} = \text{Actual Funds Invested}$$

For Investors who join the Fund post Round 1:

$$\text{Notional Initial Funds} = \text{Actual Funds Invested} / \text{Share Price at the time of investing}$$

(in other words, it's the notional amount that would need to have been invested at the start of the season in order to have returned an amount equal to the amount actually invested).

29 July 2007