



MAFL Funds : Season 2007

Where Statistics Meets Leather and Grass

1 July 2007

Season 2007, Number 13.1

In this Edition of the newsletter:

- Results of wagers and tips for Round 13
- Monkey Update
- Winning the Tight Ones
- The Alternative Premierships

Errata:

Due to a cut-and-paste error, this page in Thursday's Newsletter showed us with a small bet on Fremantle (mirroring what we'd had on Freo in Round 12). Unfortunately, we had no such bet in this round (as page 2 and the Ready Reckoner reflected). At a price of \$1.22, it wouldn't have made much difference, but apologies for any false elation nonetheless.

Hats Off To The Handicapper

 <p>Essendon v Melbourne Telstra Dome 29th June, 7:40pm</p>	 <p>Geelong v Sydney Kardinia Park 30th June, 2:10pm</p>	 <p>Fremantle v Carlton Subiaco 30th June, 2:10pm</p>	 <p>Brisbane v Port Adelaide Gabba 30th June, 7:10pm</p>
<p>Head-to-Head Ess \$1.55 / Mel \$2.35 (Essendon 57-65%)</p>	<p>Head-to-Head Gee \$1.30 / Syd \$3.30 (Geelong 70-77%)</p>	<p>Head-to-Head Fre \$1.22 / Car \$4.00 (Fremantle 75-82%%)</p>	<p>Head-to-Head Bri \$2.05 / PA \$1.72 (Port Adelaide 51-58%)</p>
<p>Line Betting Essendon -7.5 pts</p>	<p>Line Betting Geelong -17.5 pts</p>	<p>Line Betting Fremantle -23.5 pts</p>	<p>Line Betting Brisbane +6.5 pts</p>
<p>Heritage Fund Bet -</p>	<p>Heritage Fund Bet -</p>	<p>Heritage Fund Bet -</p>	<p>Heritage Fund Bet -</p>
<p>Alpha Fund Bet -</p>	<p>Alpha Fund Bet -</p>	<p>Alpha Fund Bet -</p>	<p>Alpha Fund Bet -</p>
<p>Beta Fund Bet WON 3.25% (3.92%)</p>	<p>Beta Fund Bet -</p>	<p>Beta Fund Bet -</p>	<p>Beta Fund Bet -</p>
<p>Line Fund Bet WON 7.00% (5.72%)</p>	<p>Line Fund Bet -</p>	<p>Line Fund Bet -</p>	<p>Line Fund Bet -</p>
<p>Essendon 19.11 (125) <i>def</i> Melbourne 18.15 (123)</p>	<p>Geelong 13.9 (87) <i>def</i> Sydney 10.9 (69)</p>	<p>Fremantle 27.11 (173) <i>def</i> Carlton 13.18 (96)</p>	<p>Pt Adelaide 17.10 (112) <i>def</i> Brisbane 15.15 (105)</p>
<p>Line Betting Melbourne by 5.5pts</p>	<p>Line Betting Geelong by 0.5pts</p>	<p>Line Betting Fremantle by 53.5pts</p>	<p>Line Betting Port Adelaide by 0.5pts</p>
 <p>St Kilda v Richmond Telstra Dome 30th June, 7:10pm</p>	 <p>Adelaide v West Coast Football Park 1st July, 12:40pm</p>	 <p>Kangaroos v Bulldogs MCG 1st July, 2:10pm</p>	 <p>Collingwood v Hawthorn Telstra Dome 1st July, 5:10pm</p>
<p>Head-to-Head StK \$1.57 / Ric \$2.30 (St Kilda 57-64%)</p>	<p>Head-to-Head Ade \$1.62 / WC \$2.20 (Adelaide 55-62%)</p>	<p>Head-to-Head Kan \$1.94 / WB \$1.80 (Bulldogs 49-56%)</p>	<p>Head-to-Head Col \$2.20 / Haw \$1.62 (Hawthorn 55-62%)</p>
<p>Line Betting St Kilda -8.5 pts</p>	<p>Line Betting Adelaide -8.5 pts</p>	<p>Line Betting Kangaroos +6.5 pts</p>	<p>Line Betting Collingwood +8.5 pts</p>
<p>Heritage Fund Bet -</p>	<p>Heritage Fund Bet -</p>	<p>Heritage Fund Bet -</p>	<p>Heritage Fund Bet -</p>
<p>Alpha Fund Bet -</p>	<p>Alpha Fund Bet -</p>	<p>Alpha Fund Bet -</p>	<p>Alpha Fund Bet -</p>
<p>Beta Fund Bet -</p>	<p>Beta Fund Bet -</p>	<p>Beta Fund Bet -</p>	<p>Beta Fund Bet -</p>
<p>Line Fund Bet LOST 7.78% (6.36%)</p>	<p>Line Fund Bet WON 7.00% (5.72%)</p>	<p>Line Fund Bet -</p>	<p>Line Fund Bet -</p>
<p>St Kilda 17.15 (117) <i>def</i> Richmond 15.10 (100)</p>	<p>West Coast 14.11 (95) <i>def</i> Adelaide 10.14 (74)</p>	<p>Kangaroos 17.9 (111) <i>def</i> Bulldogs 11.19 (85)</p>	<p>Hawthorn 15.5 (95) <i>def</i> Collingwood 12.15 (87)</p>
<p>Line Betting St Kilda by 8.5pts</p>	<p>Line Betting West Coast by 29.5pts</p>	<p>Line Betting Kangaroos by 32.5pts</p>	<p>Line Betting Collingwood by 0.5pts</p>

- Three wins from four bets as the Beta Fund looks to turn the corner and the Line Fund continues its winning ways.

Beta Fund Answers The Critics

When you've only a 6 point margin spanning the entirety of the results that will make two bets that you have on the same game profitable, and when a team goals in the last six seconds to produce exactly such a result, I guess you have to acknowledge that you may have been the beneficiary of something very close to luck.

Duly acknowledged. Surely, though, the Beta Fund deserved a break.

Actually, it could have been an even better weekend had the Tigers stayed just a little closer to the Saints on Saturday night. Their eventual loss by 17 points meant that they fell only 9 points short of prevailing on line betting and, as it turned out, of giving us the perfect weekend.

Never mind - I'll settle for 3 wins from 4 bets most weekends.

Here's the detail:

Results of Round 13 Wagers

Beta Fund				ROI	55.0%
	Bet*	Price	Net Return*		
Essendon	5.91%	\$1.55	3.3%	Won by 2 pts	
Total	5.9%		3.3%		

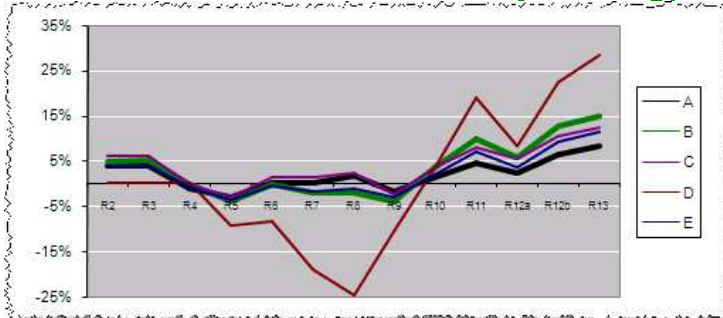
Line Fund				ROI	26.7%
	Bet*	Price	Net Return*		
Melbourne	7.78%	\$1.90	7.0%	Won by 5.5 pts	
Richmond	7.78%	\$1.90	(7.8%)	Lost by 8.5 pts	
West Coast	7.78%	\$1.90	7.0%	Won by 29.5 pts	
Total	23.3%		6.2%		

* all bets and net returns are calculated as a percentage of Notional Initial Funds

So, the Beta Fund favourite jinx is broken, at least for now, as it makes only its second successful bet of the season, and the Line Fund extends its record of consecutive profitable rounds to five.

Here's the detail in charts and numbers:

Cumulative Returns for Each Major Strategy



Overall Fund Performance

		Heritage	Alpha	Beta	Line	
Fund Return		+37.36%	+7.77%	(-13.86%)	+28.55%	
Joined [Swapped]	Strategy	Heritage	Alpha	Beta	Line	Overall Return
<small>(Percentage in each Fund)</small>						
Pre-Season	A*	20%	35%	35%	10%	+8.20%
Pre-Season	B	25%	25%	25%	25%	+14.96%
Pre-Season	C	30%	30%	30%	10%	+12.24%
Pre-Season	D	0%	0%	0%	100%	+28.55%
Pre-Season	E	20%	30%	30%	20%	+11.36%
Round 6	A*	20%	35%	35%	10%	+11.63%
Pre-Season [Round 7 & 10]	A ▶ C ▶ A	20%	35%	35%	10%	+7.32%
Pre-Season [Round 13]	C ▶ C+	60%	10%	10%	20%	+10.64%

* Recommended portfolio weightings

And here's the team-by-team, Fund-by-Fund position:

HERITAGE FUND							ALPHA FUND						
	Bets	Win	Loss	% Outlayed	ROI	% ROIF		Bets	Win	Loss	% Outlayed	ROI	% ROIF
Adelaide	1	1	0	9.8%	180.0%	17.6%	Adelaide	0	0	0	0.0%	0.0%	0.0%
Brisbane Lions	2	1	1	6.7%	26.3%	2.2%	Brisbane Lions	0	0	0	0.0%	0.0%	0.0%
Carlton	8	3	5	38.1%	17.9%	8.3%	Carlton	0	0	0	0.0%	0.0%	0.0%
Collingwood	1	1	0	5.1%	195.0%	9.9%	Collingwood	1	1	0	2.5%	40.0%	1.0%
Essendon	1	1	0	6.3%	135.0%	8.5%	Essendon	0	0	0	0.0%	0.0%	0.0%
Fremantle	1	0	1	3.1%	(100.0%)	(1.8%)	Fremantle	1	1	0	2.7%	86.0%	2.3%
Geelong	0	0	0	0.0%	0.0%	0.0%	Geelong	0	0	0	0.0%	0.0%	0.0%
Hawthorn	5	3	2	24.0%	58.2%	13.3%	Hawthorn	1	1	0	1.7%	120.0%	2.0%
Kangaroos	3	2	1	12.9%	79.3%	9.5%	Kangaroos	0	0	0	0.0%	0.0%	0.0%
Melbourne	6	2	4	35.1%	(7.3%)	(3.8%)	Melbourne	1	0	1	2.3%	(100.0%)	(2.3%)
Port Adelaide	0	0	0	0.0%	0.0%	0.0%	Port Adelaide	0	0	0	0.0%	0.0%	0.0%
Richmond	5	1	4	39.0%	(44.5%)	(18.5%)	Richmond	0	0	0	0.0%	0.0%	0.0%
St Kilda	1	0	1	6.5%	(100.0%)	(6.5%)	St Kilda	0	0	0	0.0%	0.0%	0.0%
Sydney	0	0	0	0.0%	0.0%	0.0%	Sydney	1	1	0	7.3%	65.0%	4.8%
West Coast	0	0	0	0.0%	0.0%	0.0%	West Coast	0	0	0	0.0%	0.0%	0.0%
Western Bulldogs	0	0	0	0.0%	0.0%	0.0%	Bulldogs	0	0	0	0.0%	0.0%	0.0%
Total	34	15	19	277.7%	13.5%	37.4%	Total	5	4	1	16.5%	46.7%	7.8%

BETA FUND							LINE FUND						
	Bets	Win	Loss	% Outlayed	ROI	% ROIF		Bets	Win	Loss	% Outlayed	ROI	% ROIF
Adelaide	0	0	0	0.0%	0.0%	0.0%	Adelaide	1	1	0	7.8%	90.0%	7.0%
Brisbane Lions	2	1	1	3.7%	(2.8%)	(0.1%)	Brisbane Lions	1	0	1	7.0%	(100.0%)	(7.0%)
Carlton	0	0	0	0.0%	0.0%	0.0%	Carlton	4	3	1	28.4%	36.1%	10.2%
Collingwood	2	1	1	5.4%	(32.1%)	(1.9%)	Collingwood	3	2	1	21.5%	35.6%	8.1%
Essendon	1	1	0	5.9%	3.3%	3.3%	Essendon	2	0	2	8.0%	(100.0%)	(8.0%)
Fremantle	0	0	0	0.0%	0.0%	0.0%	Fremantle	1	0	1	5.9%	(100.0%)	(5.9%)
Geelong	0	0	0	0.0%	0.0%	0.0%	Geelong	0	0	0	0.0%	0.0%	0.0%
Hawthorn	0	0	0	0.0%	0.0%	0.0%	Hawthorn	2	1	1	15.6%	(0.2%)	(0.8%)
Kangaroos	0	0	0	0.0%	0.0%	0.0%	Kangaroos	1	1	0	7.8%	90.0%	7.0%
Melbourne	1	0	1	4.1%	(100.0%)	(4.1%)	Melbourne	5	4	1	38.9%	55.6%	20.2%
Port Adelaide	1	0	1	8.3%	(100.0%)	(8.3%)	Port Adelaide	0	0	0	0.0%	0.0%	0.0%
Richmond	0	0	0	0.0%	0.0%	0.0%	Richmond	3	2	1	23.3%	26.5%	6.2%
St Kilda	1	0	1	0.9%	(100.0%)	(0.9%)	St Kilda	1	0	1	7.8%	(100.0%)	(7.8%)
Sydney	1	0	1	1.7%	(100.0%)	(1.7%)	Sydney	1	1	0	5.6%	82.0%	4.6%
West Coast	0	0	0	0.0%	0.0%	0.0%	West Coast	2	1	1	13.4%	10.4%	1.4%
Bulldogs	0	0	0	0.0%	0.0%	0.0%	Bulldogs	1	0	1	6.7%	(100.0%)	(6.7%)
Total	9	3	6	30.1%	(44.8%)	(13.9%)	Total	28	16	12	197.6%	15.3%	28.5%

So, with the Dons' last-gasp victory, the Beta Fund finally has a team with whom it's had a season-wide profitable relationship.

Melbourne's win on Line Betting continues the Line Fund's extraordinary record with the Dees: the Dees are only 6 and 4 this year when receiving start, but the Line Fund has managed to pick two-thirds (4 of 6) of those wins while only stumbling over one one-quarter (1 of 4) of the losses.

(The Line Fund's record on Carlton is even more impressive, however: the Line Fund has benefited from 3 of the 4 Carlton wins with start and tripped up on just 1 of the 8 losses).

Geelong still stands alone as the only team that no Fund has wagered on this season.

Everyone Bags a Hatful

Our tipsters were very much on the money this weekend, averaging 6.2 correct tips out of eight, which is comfortably the best result of the season. MM11 produced only the second perfect round of the season (Chi's was the other, in Round 8), propelling it to equal 4th on the tipsters' ladder, just 2 tips behind Chi. The Kangaroos' victory over the Bulldogs was the only result that might be deemed an upset by the bulk of our tipping panel, as only 2 tipsters correctly predicted this result. The only other result that produced relatively widespread disappointment was the Eagles' victory over Adelaide: only five tipsters correctly predicted this result.

Such high levels of tipping proficiency have produced little significant movement on the tipsters' ladder, though Chi has dropped a tip further back from MM16, and MM16 has regained the outright lead over BKB as result of 2 favourites going down this week.

- MM11 tips the card, MM16 bags 7, and Chi and BKB each score 6.

Here's the detail:

Results of Tips from all the Tipping Models (see Appendix for each Model's strategy)

Tipping	Ess v Mel	Gee v Syd	Fre v Car	Bri v PA	StK v Ric	Ade v WC	Kan v WB	Col v Haw	This Rnd
CTM	Ess by 15	Gee by 9	Fre by 18	PA by 2	StK by 5	Ade by 1	WB by 8	Haw by 10	6
QTM	Ess by 27	Gee by 7	Fre by 16	Bri by 1	StK by 1	Ade by 5	WB by 8	Haw by 10	5
BKB	Ess by 7.5	Gee by 17.5	Fre by 23.5	PA by 6.5	StK by 8.5	Ade by 8.5	WB by 6.5	Haw by 8.5	6
CTL	Essendon	Geelong	Fremantle	Port Adelaide	St Kilda	West Coast	Western Bulldogs	Hawthorn	7
MM2	Essendon	Geelong	Fremantle	Port Adelaide	Richmond	Adelaide	Western Bulldogs	Hawthorn	5
MM4	Essendon	Geelong	Fremantle	Port Adelaide	Richmond	Adelaide	Western Bulldogs	Hawthorn	5
MM6	Essendon	Geelong	Fremantle	Port Adelaide	St Kilda	Adelaide	Western Bulldogs	Hawthorn	6
MM8	Essendon	Geelong	Fremantle	Port Adelaide	St Kilda	West Coast	Kangaroos	Collingwood	7
MM11	Essendon	Geelong	Fremantle	Port Adelaide	St Kilda	West Coast	Kangaroos	Hawthorn	8
MM16	Essendon	Geelong	Fremantle	Port Adelaide	St Kilda	West Coast	Western Bulldogs	Hawthorn	7
MM22	Essendon	Geelong	Fremantle	Port Adelaide	St Kilda	West Coast	Western Bulldogs	Collingwood	6
NIT	Essendon (11-0)	Geelong (11-0)	Fremantle (11-0)	Port Adelaide (10-1)	St Kilda (9-2)	Adelaide (6-5)	Western Bulldogs (9-2)	Hawthorn (9-2)	6

Line Betting	Chi	Quila							
Chi	Essendon	Sydney	Carlton	Brisbane	Richmond	West Coast	Western Bulldogs	Hawthorn	1
Quila	Essendon	Sydney	Carlton	Brisbane	Richmond	West Coast	Western Bulldogs	Hawthorn	1

(Chi's and Quila's 1 from 8 on Line Betting represents their worst performance all year, and comes on the back of a poor Round 12 leaving them at just 51 from 104 and 47 from 104 respectively. Stick to the Line Fund, I reckon.)

Cumulatively, here's where the various tipsters are at:

Cumulative Tipping Results After Round 13

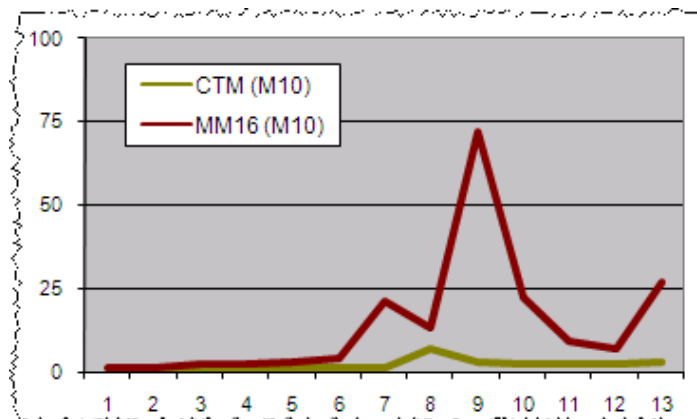
	Cum	% Correct	Av Pred Err
MM16	66.5	63.9%	-
BKB	65.5	63.0%	26.99
CTM	61.5	59.1%	27.62
MM8	59.5	57.2%	-
MM11	59.5	57.2%	-
MM4	58.5	56.3%	-
MM6	56.5	54.3%	-
MM22	56.5	54.3%	-
NIT	56.5	54.3%	-
QTM	55.5	53.4%	29.06
CTL	55.5	53.4%	-
MM2	48.5	46.6%	-

Surely, you'd think, Chi's 6 from 8 this week will have put some space between him and the Monkeys.

Monkeys Slip Slightly

This week's results illustrate just how difficult it is to tip at a level that's demonstrably better than chance.

Round-by-Round M10 Scores



Chi's 6 from 8 was only enough to add one monkey to his M10 score, moving it from 2 and 3. MM16's 7 from 8 made a slightly bigger difference, adding 20 monkeys to its M10 score, lifting it to 27. Still, that's not a lot of monkeys given a 64% accuracy level.

Winning the Tight Ones

It's something of a cliché that champion teams tend to win close games. With that thought in mind and with the relatively small margins of victory recorded in a few games this weekend, I thought it'd be interesting to look at the performance of all the teams so far this season in close games.

Margins of Victory and Defeat

	W1-11	Draw	L1-11	Season		
				W	D	L
Adelaide	1	0	2	7	0	6
Brisbane Lions	0	1	1	4	1	8
Carlton	2	0	0	4	0	9
Collingwood	2	0	1	8	0	5
Essendon	5	0	1	8	0	5
Fremantle	1	0	2	6	0	7
Geelong	1	0	1	10	0	3
Hawthorn	2	0	1	9	0	4
Kangaroos	1	0	1	8	0	5
Melbourne	0	0	4	2	0	11
Port Adelaide	2	0	0	8	0	5
Richmond	0	1	2	1	1	11
St Kilda	0	0	0	6	0	7
Sydney	1	0	2	6	0	7
West Coast	1	0	1	9	0	4
Western Bulldogs	1	0	1	7	0	6

This table is, I'd suggest, worthy of a few minutes review. Let me point out a few things that leap out for me:

- Almost one half of Essendon's games (viz, 6) have been decided by less than 2 goals. Remarkably, it's won 5 of those 6 games, these 5 representing over 60% of its wins for the season.
- In contrast, Melbourne have played in 4 games that have been decided by less than 2 goals and has contrived to lose all four of them.
- Only Carlton and Port Adelaide have perfect records in games won by less than two goals. Both have 2 and 0 records, though the 2 wins represent half of Carlton's but only a quarter of Port's.
- St Kilda have not played in a single game where the final margin has been less than 2 goals. Indeed, though not shown in this table, 10 of their games have been decided by 4 goals or more – 4 in their favour, and 6 against – the highest number of any team.

The Alternative Premierships

Geelong coast-to-coast victory over the Swans has allowed it to retain leadership of all four End of Quarter Premierships.

End of 1st Quarter Premiership			End of 2nd Quarter Premiership			End of 3rd Quarter Premiership			End of 4th Quarter Premiership		
Team	Pts	%	Team	Pts	%	Team	Pts	%	Team	Pts	%
Geelong	44	178.9	Geelong	42	172.6	Geelong	44	186.6	Geelong	40	153.2
Kangaroos	40	136.0	West Coast	38	132.8	West Coast	40	114.6	Hawthorn	36	121.3
Adelaide	40	128.3	Kangaroos	36	114.3	Kangaroos	36	117.3	West Coast	36	121.2
Essendon	36	124.6	Adelaide	34	117.0	Hawthorn	32	114.9	Collingwood	32	106.1
West Coast	32	133.9	Hawthorn	32	104.7	Collingwood	30	105.7	Essendon	32	103.2
Hawthorn	24	97.3	Fremantle	26	106.3	Adelaide	28	106.7	Port Adelaide	32	100.3
Carlton	24	93.9	Essendon	26	100.2	Port Adelaide	28	106.0	Kangaroos	32	99.2
Richmond	22	86.9	Collingwood	26	99.0	Western Bulldogs	28	96.6	Adelaide	28	108.5
Collingwood	22	81.7	Western Bulldogs	24	98.9	Fremantle	24	102.0	Western Bulldogs	28	98.1
Fremantle	20	97.4	Port Adelaide	24	92.6	Sydney	24	93.9	Sydney	24	107.8
Port Adelaide	20	92.0	Sydney	24	89.5	St Kilda	24	91.0	Fremantle	24	103.4
Sydney	20	86.7	Richmond	24	85.6	Brisbane Lions	20	91.5	St Kilda	24	91.0
Brisbane Lions	20	81.9	St Kilda	20	93.9	Essendon	16	93.1	Brisbane Lions	18	89.5
Western Bulldogs	18	89.6	Brisbane Lions	16	90.8	Carlton	16	85.0	Carlton	16	78.7
St Kilda	18	81.8	Carlton	16	81.9	Richmond	14	79.3	Melbourne	8	77.4
Melbourne	16	68.5	Melbourne	8	66.8	Melbourne	12	73.5	Richmond	6	78.4

The variability in Essendon's performances at the end of each quarter is quite extraordinary: they're 4th based on End of Q1 performance, 7th based on half-time scores, 13th based on End of Q3 performances, and 5th on the ladder.

Carlton, meantime should be lobbying the league to shorten all matches to a single quarter. They're 7th based on End of Q1 performances and 14th or 15th on performances at the end of all other quarters.

Turning next to the within-quarter performances, Collingwood stands out as the team that starts and ends poorly: they're 9th on Q1 performances, 1st on Q2, 5th on Q3, and 10th on Q4. So good are they, however, in the middle quarters that they've won 8 of their 13 matches and lie 4th on the ladder.

During 1st Quarter Premiership			During 2nd Quarter Premiership			During 3rd Quarter Premiership			During 4th Quarter Premiership		
Team	Pts	%	Team	Pts	%	Team	Pts	%	Team	Pts	%
Geelong	44	178.9	Collingwood	38	120.8	Geelong	36	154.7	Hawthorn	42	142.1
Kangaroos	40	138.0	Geelong	36	166.1	Port Adelaide	36	140.3	Essendon	40	143.1
Adelaide	40	128.3	West Coast	36	131.5	Kangaroos	34	124.7	Sydney	34	162.5
Essendon	36	124.6	Western Bulldogs	34	113.6	Hawthorn	32	135.9	West Coast	34	144.9
West Coast	32	133.9	St Kilda	34	110.4	Collingwood	32	120.6	Geelong	30	119.7
Hawthorn	24	97.3	Fremantle	28	118.9	Brisbane Lions	28	92.9	Fremantle	30	107.5
Carlton	24	93.9	Adelaide	28	105.8	Sydney	26	104.8	Adelaide	28	114.5
Richmond	22	86.9	Richmond	28	84.2	West Coast	26	85.5	Melbourne	28	90.7
Collingwood	22	81.7	Brisbane Lions	24	101.1	Fremantle	24	95.1	St Kilda	26	91.0
Fremantle	20	97.4	Kangaroos	24	94.9	Western Bulldogs	24	91.8	Collingwood	24	107.1
Port Adelaide	20	92.0	Sydney	24	93.3	Carlton	24	91.1	Western Bulldogs	24	103.4
Sydney	20	86.7	Port Adelaide	22	93.1	Melbourne	24	90.4	Port Adelaide	22	82.6
Brisbane Lions	20	81.9	Hawthorn	20	111.9	St Kilda	20	85.7	Brisbane Lions	20	83.5
Western Bulldogs	18	89.6	Carlton	16	69.9	Essendon	20	80.5	Richmond	16	76.1
St Kilda	18	81.8	Essendon	12	83.2	Adelaide	16	88.8	Kangaroos	14	66.6
Melbourne	16	68.5	Melbourne	12	65.0	Richmond	14	68.5	Carlton	4	61.4

The Kangaroos are another team with highly variable performance levels across the quarters. They're 2nd on Q1 performances, 10th on Q2, 3rd on Q3, and 15th on Q4. Like Collingwood though, they've not suffered for such variability: they've had 8 wins and sit at 7th on the ladder.

For Adelaide, it's Q3 that's been their downfall this season (as, indeed, it was this weekend). They've won only 4 third quarters this season on their way to 7 wins and a precarious grip on a spot in the eight.

Richmond, however, find the entire second half to be a problem. They're 8th in terms of Q1 and Q2 performances, but 16th and 14th in terms of Q3 and Q4 performances respectively.

Sydney's problem is slow starts. They're 12th on Q1 performances, 11th on Q2, 7th on Q3 and 3rd on Q4. Too often though they've left themselves too much to do in the final term, which is why they're now 10th on the ladder.

Team	Pts	%	GF	BF	PF	Ace %	Rank	GA	BA	PA	1	2	3	4	5	6	7	8	9	10	11	12	13
Geelong	40	153.2	210	185	1,445	53.2%	6	135	133	943	L	✓	✓	L	L	✓	✓	✓	✓	✓	✓	✓	✓
Hawthorn	36	121.3	183	154	1,252	54.3%	3	146	156	1,032	L	✓	✓	✓	L	✓	✓	✓	✓	✓	✓	✓	✓
West Coast	36	121.2	169	181	1,195	48.3%	14	143	128	986	✓	✓	✓	✓	✓	✓	L	L	✓	L	✓	L	✓
Collingwood	32	106.1	169	193	1,207	46.7%	16	163	160	1,138	✓	L	✓	L	✓	✓	✓	✓	✓	✓	✓	L	L
Essendon	32	103.2	194	162	1,326	54.5%	2	186	169	1,285	✓	✓	✓	✓	✓	✓	✓	✓	✓	✓	✓	✓	✓
Port Adelaide	32	100.3	177	177	1,239	50.0%	11	178	167	1,235	✓	✓	L	✓	✓	✓	✓	L	L	L	✓	✓	✓
Kangaroos	32	99.2	173	174	1,212	49.9%	12	175	172	1,222	L	L	L	✓	✓	✓	✓	✓	✓	✓	✓	L	✓
Adelaide	28	108.5	152	151	1,063	50.2%	10	136	164	980	L	✓	✓	✓	✓	L	L	✓	✓	✓	✓	✓	✓
Western Bulldogs	28	98.1	191	162	1,308	54.1%	4	192	181	1,333	✓	L	L	✓	✓	✓	✓	✓	L	L	✓	✓	L
Sydney	24	107.8	155	138	1,068	52.9%	7	144	127	991	L	✓	✓	L	✓	L	✓	✓	✓	✓	✓	L	L
Fremantle	24	103.4	195	158	1,328	55.2%	1	186	168	1,284	L	L	✓	✓	✓	✓	✓	✓	✓	✓	✓	L	✓
St Kilda	24	91.0	146	154	1,030	48.7%	13	165	142	1,132	✓	L	L	✓	✓	✓	✓	✓	✓	✓	✓	L	✓
Brisbane Lions	18	89.5	150	163	1,063	47.9%	15	168	180	1,188	✓	✓	L	L	✓	✓	✓	L	L	L	D	L	L
Carlton	16	78.7	192	183	1,335	51.2%	8	250	197	1,697	✓	L	✓	✓	L	L	L	L	L	L	✓	✓	✓
Melbourne	8	77.4	152	149	1,061	50.5%	9	196	194	1,370	L	L	L	✓	✓	✓	✓	✓	✓	✓	✓	✓	✓
Richmond	6	78.4	167	147	1,149	53.2%	5	212	193	1,465	L	L	L	L	L	L	L	L	L	L	D	L	✓

Appendix

Tipping Model Strategies

Strategy Name	Basis for Tips
Chi Tipping Model (CTM)	Complex statistical model incorporating a range of factors.
Quila Tipping Model (QTM)	Uses an approach similar to that used for the CTM.
Bookies Know Best (BKB)	For each game, tips the TAB Sportsbet favourite. In the case of equal favourites, it tips the true home team or, if there's no true home team, tips the team with the higher ladder position (ties are broken using percentage then for-and-against margin).
Consult The Ladder (CTL)	Tips the team with the higher ladder position (ties are broken using percentage then for-and-against margin). For the first round of the season, use the ladder position at the end of the previous regular season.
Momentum Matters (MMx)	A series of strategies that involve building competition ladders based only on the results of the most recent x rounds of regular season games (drawing on games from the previous season if required). The MM2 strategy considers only the last 2 regular season rounds, the MM4 strategy only the last 4 rounds, and so on. Once a ladder has been built for a strategy, the selected team is that with the superior ladder position (as per CTL above). This year we'll track the performance of MM2, MM4, MM6, MM8, MM11, MM16 and MM22.
No Independent Thought (NIT)	Tips the team that is most popular amongst all other strategies.

Notional Initial Funds

For reasons that are somewhat technical (I'm happy to provide details to anyone who's interested but, broadly, it allows me to describe bets in terms of a common percentage for all Investors and still maintain the same share price for all Investors), I need to calculate what I call "Notional Initial Funds". It's calculated separately for each Fund.

For original Investors, the definition is straightforward:

$$\text{Notional Initial Funds} = \text{Actual Funds Invested}$$

For Investors who join the Fund post Round 1:

$$\text{Notional Initial Funds} = \text{Actual Funds Invested} / \text{Share Price at the time of investing}$$

(in other words, it's the notional amount that would need to have been invested at the start of the season in order to have returned an amount equal to the amount actually invested).

1 July 2007