



MAFL Funds : Season 2007

Where Statistics Meets Leather and Grass

11 June 2007

Season 2007, Number 11.1

In this Edition of the newsletter:

- Results of wagers and tips for Round 11
- Monkey Update
- What Lead's A Good Lead?
- The Alternative Premierships

Underdogs 5 : Favourites 3

 <p>Essendon v West Coast Telstra Dome 8th June, 7:40pm</p> <p>Head-to-Head Ess \$2.35 / WC \$1.55 (West Coast 57-65%)</p> <p>Line Betting Essendon +9.5 pts</p> <p>Heritage Fund Bet WON 8.50% (7.11%)</p> <p>Alpha Fund Bet -</p> <p>Beta Fund Bet -</p> <p>Line Fund Bet -</p> <p>Essendon 15.5 (95) <i>def</i> West Coast 14.10 (94)</p> <p>Line Betting Essendon by 10.5pts</p>	 <p>Hawthorn v Sydney MCG 9th June, 2:10pm</p> <p>Head-to-Head Haw \$1.77 / Syd \$1.97 (Hawthorn 49-57%)</p> <p>Line Betting Hawthorn -6.5 pts</p> <p>Heritage Fund Bet LOST 1.88% (1.57%)</p> <p>Alpha Fund Bet -</p> <p>Beta Fund Bet -</p> <p>Line Fund Bet WON 4.59% (4.44%)</p> <p>Sydney 11.9 (75) <i>def</i> Hawthorn 9.12 (66)</p> <p>Line Betting Sydney by 15.5pts</p>	 <p>Carlton v Port Adelaide Telstra Dome 9th June, 7:10pm</p> <p>Head-to-Head Car \$1.87 / PA \$1.87 (Both 47-54%%)</p> <p>Line Betting Carlton +6.5 pts</p> <p>Heritage Fund Bet WON 2.22% (1.86%)</p> <p>Alpha Fund Bet -</p> <p>Beta Fund Bet -</p> <p>Line Fund Bet WON 4.01% (3.88%)</p> <p>Carlton 22.9 (141) <i>def</i> Port Adel 14.18 (102)</p> <p>Line Betting Carlton by 45.5pts</p>	 <p>Brisbane v Bulldogs Gabba 9th June, 7:10pm</p> <p>Head-to-Head Bri \$1.96 / WB \$1.78 (Bulldogs 49-56%)</p> <p>Line Betting Brisbane +6.5 pts</p> <p>Heritage Fund Bet LOST 3.08% (2.57%)</p> <p>Alpha Fund Bet -</p> <p>Beta Fund Bet -</p> <p>Line Fund Bet LOST 7.02% (6.78%)</p> <p>Bulldogs 13.17 (95) <i>def</i> Brisbane 10.12 (72)</p> <p>Line Betting Bulldogs by 16.5pts</p>
 <p>Adelaide v Geelong Football Park 10th June, 12:40pm</p> <p>Head-to-Head Ade \$2.07 / Gee \$1.70 (Geelong 52-59%)</p> <p>Line Betting Adelaide +7.5 pts</p> <p>Heritage Fund Bet -</p> <p>Alpha Fund Bet -</p> <p>Beta Fund Bet -</p> <p>Line Fund Bet WON 7.01% (6.77%)</p> <p>Geelong 9.15 (69) <i>def</i> Adelaide 9.8 (62)</p> <p>Line Betting Adelaide by 0.5pt</p>	 <p>St Kilda v Kangaroos Telstra Dome 10th June, 2:10pm</p> <p>Head-to-Head StK \$1.72 / Kan \$2.04 (St Kilda 51-58%)</p> <p>Line Betting St Kilda -6.5 pts</p> <p>Heritage Fund Bet -</p> <p>Alpha Fund Bet -</p> <p>Beta Fund Bet LOST 0.88% (1.06%)</p> <p>Line Fund Bet -</p> <p>Kangaroos 11.14 (80) <i>def</i> St Kilda 8.10 (58)</p> <p>Line Betting Kangaroos by 28.5pts</p>	 <p>Fremantle v Richmond Subiaco 10th June, 2:40pm</p> <p>Head-to-Head Fre \$1.15 / Ric \$5.00 (Fremantle 80-87%)</p> <p>Line Betting Fremantle -27.5 pts</p> <p>Heritage Fund Bet -</p> <p>Alpha Fund Bet -</p> <p>Beta Fund Bet -</p> <p>Line Fund Bet -</p> <p>Fremantle 18.15 (123) <i>def</i> Richmond 15.12 (102)</p> <p>Line Betting Richmond by 6.5pts</p>	 <p>Melbourne v Collingwood MCG 11th June, 2:10pm</p> <p>Head-to-Head Mel \$2.20 / Col \$1.62 (Collingwood 55-62%)</p> <p>Line Betting Melbourne +7.5 pts</p> <p>Heritage Fund Bet WON 4.46% (3.73%)</p> <p>Alpha Fund Bet -</p> <p>Beta Fund Bet -</p> <p>Line Fund Bet WON 7.01% (6.77%)</p> <p>Melbourne 13.16 (94) <i>def</i> Collingwood 11.15 (81)</p> <p>Line Betting Melbourne by 20.5pts</p>

Four Winning Days

Well that was the kind of weekend to which I'd like to grow accustomed.

Eleven bets for seven wins, and healthy increases in the value of all Investor portfolios, especially those with Strategies B and D, both of which benefitted handsomely from the Line Fund's 4-out-of-5 weekend.

Here's the detail:

Results of Round 11 Wagers

Heritage Fund				ROI	58.3%
	Bet*	Price	Net Return*		
Essendon	6.30%	\$2.35	8.5%	Won by 1 pt	
Hawthorn	1.88%	\$1.77	(1.9%)	Lost by 9 pts	
Carlton	2.55%	\$1.87	2.2%	Won by 39 pts	
Brisbane	3.08%	\$1.96	(3.1%)	Lost by 23 pts	
Melbourne	3.71%	\$2.20	4.5%	Won by 13 pts	
Total	17.5%		10.2%		

Beta Fund				ROI	(100.0%)
	Bet*	Price	Net Return*		
St Kilda	0.88%	\$1.72	(0.9%)	Lost by 22 pts	
Total	0.9%		(0.9%)		

Line Fund				ROI	47.0%
	Bet*	Price	Net Return*		
Sydney	5.60%	\$1.82	4.6%	Won by 15.5 pts	
Carlton	5.01%	\$1.80	4.0%	Won by 45.5 pts	
Brisbane	7.02%	\$1.87	(7.0%)	Lost by 16.5 pts	
Adelaide	7.79%	\$1.90	7.0%	Won by 0.5 pt	
Melbourne	7.79%	\$1.90	7.0%	Won by 20.5 pts	
Total	33.2%		15.6%		

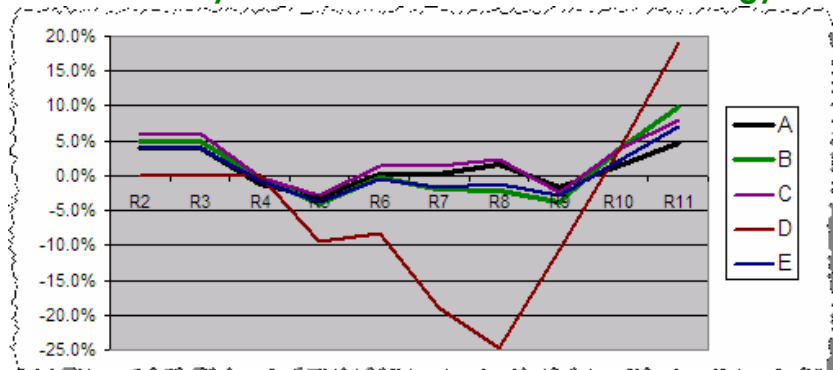
* all bets and net returns are calculated as a percentage of Notional Initial Funds

We certainly had the better of the close games this weekend, firstly with the Dons' 1 point triumph over the Weagles on Friday night, and then with Ken McGregor's 29th minute final-quarter behind narrowing the margin to 7 points and getting us over the line by a scant 1/2 point courtesy of our 7 1/2 points start against the Cats. Still, we've had our bad luck this season too, so penning a sympathy card to Sportsbet is not on the To Do list for this week.

The only dark cloud on the weekend's results was the continuation of the Beta Fund's ability to sniff out and toss money at what prove invariably to be losing favourites. Beta's now 2 and 5 when backing favourites. Fortunately it's not been a particularly active Fund so far, so we're only down just over 17% on this Fund for the season.

From dark clouds to bright sunshine, what a remarkable turnaround it's been for the Line Fund. After Round 8, its record was 3 wins and 7 losses and the Fund price was down to a smidge over 75 cents. In the last three weeks it's gone 9 and 2, rocketing its price to \$1.19, as you can see in the chart below.

Round-by-Round Performance of Each Strategy



- Eleven bets for seven wins and profitability for all Strategies

- All Investors have now made money

Here's the current picture, showing all the performance data, including that for those Investors who joined mid-season and for those who've swapped Strategies:

Overall Fund Performance						
		Heritage	Alpha	Beta	Line	
Fund Return		+29.73%	+7.77%	(-17.11%)	+19.07%	
Joined [Swapped]	Strategy	Heritage	Alpha	Beta	Line	Overall Return
(Percentage in each Fund)						
Pre-Season	A*	20%	35%	35%	10%	+4.58%
Pre-Season	B	25%	25%	25%	25%	+9.87%
Pre-Season	C	30%	30%	30%	10%	+8.02%
Pre-Season	D	0%	0%	0%	100%	+19.07%
Pre-Season	E	20%	30%	30%	20%	+6.96%
Round 6	A*	20%	35%	35%	10%	+7.69%
Pre-Season [Round 7 & 10]	A ▶ C ▶ A	20%	35%	35%	10%	+3.43%

* Recommended portfolio weightings

Just as we like it: lots of green in the Overall Return column.

Next, let's turn to the Fund-by-Fund, Team-by-Team picture.

The Heritage Fund has made 31 bets this season, for 14 wins and 17 losses. Carlton's been its most popular team (and one of its most profitable), with 7 bets yielding 3 wins, 4 losses and delivering a 10.6c hike in the Fund price. Of the 10 teams on which the Heritage Fund has wagered, 7 of them have made a net positive contribution to the Fund price. Conspicuous amongst the teams that haven't delivered are the Tigers, who've managed to knock 31½c off the Fund price without delivering a single increment from 4 bets.

Luck's been fairly even-handed with the Heritage Fund so far. In games decided by 5 points or fewer, the Fund's had 2 wins and 2 losses; in games decided by between 6 and 11 points, it's had 1 win and 1 loss; and in games decided by between 12 and 17 points, it's had 4 wins and 5 losses.

HERITAGE FUND							ALPHA FUND						
	Bets	Win	Loss	% Outlayed	ROI	% RONF		Bets	Win	Loss	% Outlayed	ROI	% RONF
Adelaide	1	1	0	9.8%	180.0%	17.6%	Adelaide	0	0	0	0.0%	0.0%	0.0%
Brisbane Lions	2	1	1	6.7%	26.3%	2.2%	Brisbane Lions	0	0	0	0.0%	0.0%	0.0%
Carlton	7	3	4	35.8%	25.5%	10.6%	Carlton	0	0	0	0.0%	0.0%	0.0%
Collingwood	1	1	0	5.1%	195.0%	9.9%	Collingwood	1	1	0	2.5%	40.0%	1.0%
Essendon	1	1	0	6.3%	135.0%	8.5%	Essendon	0	0	0	0.0%	0.0%	0.0%
Fremantle	0	0	0	0.0%	0.0%	0.0%	Fremantle	1	1	0	2.7%	86.0%	2.3%
Geelong	0	0	0	0.0%	0.0%	0.0%	Geelong	0	0	0	0.0%	0.0%	0.0%
Hawthorn	5	3	2	24.0%	58.2%	13.3%	Hawthorn	1	1	0	1.7%	120.0%	2.0%
Kangaroos	3	2	1	12.9%	79.3%	9.5%	Kangaroos	0	0	0	0.0%	0.0%	0.0%
Melbourne	6	2	4	35.1%	(7.3%)	(3.8%)	Melbourne	1	0	1	2.3%	(100.0%)	(2.3%)
Port Adelaide	0	0	0	0.0%	0.0%	0.0%	Port Adelaide	0	0	0	0.0%	0.0%	0.0%
Richmond	4	0	4	31.5%	(100.0%)	(31.5%)	Richmond	0	0	0	0.0%	0.0%	0.0%
St Kilda	1	0	1	6.5%	(100.0%)	(6.5%)	St Kilda	0	0	0	0.0%	0.0%	0.0%
Sydney	0	0	0	0.0%	0.0%	0.0%	Sydney	1	1	0	7.3%	65.0%	4.8%
Vest Coast	0	0	0	0.0%	0.0%	0.0%	Vest Coast	0	0	0	0.0%	0.0%	0.0%
Western Bulldogs	0	0	0	0.0%	0.0%	0.0%	Bulldogs	0	0	0	0.0%	0.0%	0.0%
Total	31	14	17	173.5%	17.1%	29.7%	Total	5	4	1	16.5%	46.7%	7.8%

BETA FUND							LINE FUND						
	Bets	Win	Loss	% Outlayed	ROI	% RONF		Bets	Win	Loss	% Outlayed	ROI	% RONF
Adelaide	0	0	0	0.0%	0.0%	0.0%	Adelaide	1	1	0	7.8%	90.0%	7.0%
Brisbane Lions	2	1	1	3.7%	(2.8%)	(0.1%)	Brisbane Lions	1	0	1	7.0%	(100.0%)	(7.0%)
Carlton	0	0	0	0.0%	0.0%	0.0%	Carlton	3	3	0	20.6%	87.6%	18.0%
Collingwood	2	1	1	5.4%	(32.1%)	(1.9%)	Collingwood	2	1	1	13.7%	2.4%	1.1%
Essendon	0	0	0	0.0%	0.0%	0.0%	Essendon	1	0	1	5.0%	(100.0%)	(5.0%)
Fremantle	0	0	0	0.0%	0.0%	0.0%	Fremantle	1	0	1	5.9%	(100.0%)	(5.9%)
Geelong	0	0	0	0.0%	0.0%	0.0%	Geelong	0	0	0	0.0%	0.0%	0.0%
Hawthorn	0	0	0	0.0%	0.0%	0.0%	Hawthorn	2	1	1	15.6%	(0.2%)	(0.8%)
Kangaroos	0	0	0	0.0%	0.0%	0.0%	Kangaroos	1	1	0	7.8%	90.0%	7.0%
Melbourne	1	0	1	4.1%	(100.0%)	(4.1%)	Melbourne	4	3	1	31.1%	46.7%	13.2%
Port Adelaide	1	0	1	8.3%	(100.0%)	(8.3%)	Port Adelaide	0	0	0	0.0%	0.0%	0.0%
Richmond	0	0	0	0.0%	0.0%	0.0%	Richmond	1	1	0	7.8%	90.0%	7.0%
St Kilda	1	0	1	0.9%	(100.0%)	(0.9%)	St Kilda	1	0	1	7.8%	(100.0%)	(7.8%)
Sydney	1	0	1	1.7%	(100.0%)	(1.7%)	Sydney	1	1	0	5.6%	82.0%	4.6%
Vest Coast	0	0	0	0.0%	0.0%	0.0%	Vest Coast	1	0	1	5.6%	(100.0%)	(5.6%)
Bulldogs	0	0	0	0.0%	0.0%	0.0%	Bulldogs	1	0	1	6.7%	(100.0%)	(6.7%)
Total	8	2	6	24.2%	(70.0%)	(17.1%)	Total	21	12	9	148.0%	14.0%	19.1%

- Chi's closed to within 3 tips of the lead

Looking next at the Alpha Fund, we find a Fund that's made surprisingly few bets so far this season: just 5 bets in the 8 rounds during which it's been active. But, its 4 and 1 record from those 5 bets has delivered a near 50% ROI and a 7.8c lift in the Fund price, so it's hard to be too critical of its performance, especially when you realise that its only losing bet was on the Dees when they lost by 1 point to the Roos.

Then we come to the Beta Fund, which has, simply, had a poor season so far, bagging just 2 from 8, resulting in a price under 83c. What's more, only one of the teams on which it's wagered has contrived to lose by less than 3 goals - quite an achievement given that all but one of them have been favourites.

And, finally, the bad Fund made good: the Line Fund. Only a few weeks back I had Investors querying what I'd do if the Line Fund ran out of money. Well, fortunately, that doesn't seem like an issue for the immediate term anyway, with the Fund cruising at \$1.19, having made 21 bets for 12 wins and 9 losses. Melbourne and Carlton have been the star performers for this Fund, the Dees winning 3 bets from 4 for a net 13c price gain, and the Blues winning 3 from 3 for a net price gain of 18c.

A balanced assessment would probably conclude that luck's been slightly kind to this Fund. Taking into account the handicap starts, in games decided by 5½ points or fewer, the Fund's had 2 wins and 0 losses; in games decided by between 6½ and 11½ points, it's had 2 wins and 1 loss; and in games decided by between 12½ and 17½ points, it's had 1 win and 3 losses.

Call it luck, call it good management, but I'm happy with where the Funds have finished the first half of the regular season.

Chi Closes the Gap

Something of a mixed bag for our tipsters this weekend, with scores ranging from 3 for the competition front-runners MM16 and BKB, to 6 for the fast-improving MM4, who's now moved 2 tips clear into outright fourth.

The Sydney and Melbourne wins caught virtually all tipsters by surprise, and the Essendon and Carlton wins were also untipped by the majority.

Here's the detail:

Tips from all the Tipping Models (see Appendix for each Model's strategy)

Tipping										This Rnd
	Ess v WC	Haw v Syd	Car v PA	Bri v WB	Ade v Gee	STK v Kan	Fre v Ric	Mel v Col		
CTM	Ess by 4	Haw by 5	Car by 6	WB by 7	Gee by 15	STK by 14	Fre by 17	Col by 1		5
QTM	Ess by 17	Haw by 11	Car by 11	Bri by 2	Gee by 33	STK by 22	Fre by 21	Mel by 1		5
BKB	WC by 9.5	Haw by 6.5	PA by 6.5	WB by 6.5	Gee by 7.5	STK by 6.5	Fre by 27.5	Col by 7.5		3
CTL	West Coast	Hawthorn	Port Adelaide	Western Bulldogs	Geelong	Kangaroos	Fremantle	Collingwood		4
MM2	Essendon	Hawthorn	Carlton	Brisbane Lions	Geelong	Kangaroos	Fremantle	Collingwood		5
MM4	Essendon	Hawthorn	Carlton	Western Bulldogs	Geelong	Kangaroos	Fremantle	Collingwood		6
MM6	West Coast	Hawthorn	Port Adelaide	Western Bulldogs	Geelong	Kangaroos	Fremantle	Collingwood		4
MM8	West Coast	Hawthorn	Port Adelaide	Western Bulldogs	Geelong	Kangaroos	Fremantle	Collingwood		4
MM11	West Coast	Hawthorn	Port Adelaide	Western Bulldogs	Geelong	Kangaroos	Fremantle	Collingwood		4
MM16	West Coast	Hawthorn	Port Adelaide	Western Bulldogs	Geelong	St Kilda	Fremantle	Collingwood		3
MM22	West Coast	Sydney	Port Adelaide	Western Bulldogs	Geelong	St Kilda	Fremantle	Collingwood		3
NIT	West Coast (7-4)	Hawthorn (10-1)	Port Adelaide (7-4)	Western Bulldogs (9-2)	Geelong (11-0)	Kangaroos (6-5)	Fremantle (11-0)	Collingwood (10-1)		4
Line Betting										
Chi	Essendon	Sydney	Carlton	Western Bulldogs	Geelong	St Kilda	Richmond	Melbourne		6
Quila	Essendon	Hawthorn	Carlton	Brisbane	Geelong	St Kilda	Richmond	Melbourne		4

Focussing on Line Betting for a moment, Chi's 6 from 8 this week has moved him to 47 from 88 (53.4%) for the season, a record good enough to be marginally profitable on this form of betting. More impressive is his record from Round 6 onwards during which he's 29 and 19 (60.4%).

And, speaking of Line Betting, the Sportsbet bookie must be getting a little concerned with his ability to set handicaps given that, over the last three rounds, 19 of the 24 teams receiving start have been successful on Line Betting. Expect another round of very small starts this week.

Anyway, moving back to head-to-head tipping, with BKB and MM16 stumbling this week, Chi's 5 from 8 was enough to drag him to within 2 tips of BKB and 3 tips of MM16. Quila also managed 5 correct tips and so remains 4 adrift of the Master Tipster Who Woofs.

Cumulative Tipping Results After Round 11

	Cum	% Correct	Av Pred Err
MM16	55.5	63.1%	-
BKB	54.5	61.9%	26.55
CTM	52.5	59.7%	26.70
MM4	51.5	58.5%	-
MM8	49.5	56.3%	-
QTM	48.5	55.1%	28.13
MM6	47.5	54.0%	-
MM11	47.5	54.0%	-
MM22	47.5	54.0%	-
NIT	47.5	54.0%	-
CTL	44.5	50.6%	-
MM2	41.5	47.2%	-

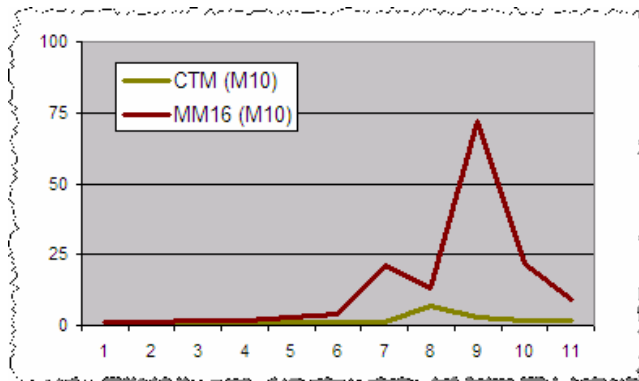
One interesting fact from the first half of the season is that of the 56 games in which Chi's and MM16's tips have agreed, 38 (67.9%) have been correct.

Chi Still Worth A Pair of Monkeys

MM16 slipped down the evolutionary rung again this weekend on the back of a worse-than-chance 3 from 8 tipping performance. MM16's M10 score now stands at just 9, the lowest it's been since Round 6.

Meantime Chi's 5 from 8 made no impression on the monkeys, leaving him with an M10 of 2, roughly where he's been at the end of the past 3 rounds.

M10 Measures After Round 11 : Chi and MM16



What Lead's A Good Lead?

At three-quarter-time on Monday, with the Dees clinging to a 3-point lead and looking dangerously vulnerable, I got to wondering about the importance of leading at the end of each term. This year it's seemed at times that no lead has been safe. On Friday night, for example, the Dons let the Eagles slip away to what appeared to be an insurmountable lead at the half, only to chip away in the third, and then flash home in the final term to grab the points.

Has this, I wondered, been a markedly different season in terms of teams trailing and yet ultimately prevailing?

The tables below show that this hasn't been the case.

Lead at Each Change by Eventual Result – 2006 and 2007

Regular Season 2007

Lead at the end of the 1st Quarter

Lead (pts)	Wins	Losses or Draws	Total	% Win	% Games
1-5	10	9	19	53%	22%
6-11	15	8	23	65%	26%
12-17	13	5	18	72%	21%
18-23	6	6	12	50%	14%
24-29	7	2	9	78%	10%
30-35	4	0	4	100%	5%
36-41	0	1	1	0%	1%
42+	1	0	1	100%	1%
Total	56	31	87	64%	100%

Lead at the end of the 2nd Quarter

Lead (pts)	Wins	Losses or Draws	Total	% Win	% Games
1-5	6	8	14	43%	17%
6-11	10	3	13	77%	15%
12-17	14	5	19	74%	23%
18-23	5	4	9	56%	11%
24-29	8	0	8	100%	10%
30-35	9	2	11	82%	13%
36-41	6	0	6	100%	7%
42+	4	0	4	100%	5%
Total	62	22	84	74%	100%

Lead at the end of the 3rd Quarter

Lead (pts)	Wins	Losses or Draws	Total	% Win	% Games
1-5	9	4	13	69%	15%
6-11	8	3	11	73%	13%
12-17	12	2	14	86%	16%
18-23	12	0	12	100%	14%
24-29	7	1	8	88%	9%
30-35	7	0	7	100%	8%
36-41	9	0	9	100%	10%
42+	12	0	12	100%	14%
Total	76	10	86	88%	100%

Regular Season 2006

Lead at the end of the 1st Quarter

Lead (pts)	Wins	Losses or Draws	Total	% Win	% Games
1-5	18	23	41	44%	24%
6-11	26	13	39	67%	23%
12-17	20	13	33	61%	19%
18-23	20	9	29	69%	17%
24-29	11	0	11	100%	6%
30-35	11	1	12	92%	7%
36-41	7	0	7	100%	4%
42+	1	0	1	100%	1%
Total	114	59	173	66%	100%

Lead at the end of the 2nd Quarter

Lead (pts)	Wins	Losses or Draws	Total	% Win	% Games
1-5	20	13	33	61%	19%
6-11	18	10	28	64%	16%
12-17	23	4	27	85%	15%
18-23	25	2	27	93%	15%
24-29	19	1	20	95%	11%
30-35	6	2	8	75%	5%
36-41	9	1	10	90%	6%
42+	22	0	22	100%	13%
Total	142	33	175	81%	100%

Lead at the end of the 3rd Quarter

Lead (pts)	Wins	Losses or Draws	Total	% Win	% Games
1-5	11	9	20	55%	11%
6-11	14	7	21	67%	12%
12-17	21	3	24	88%	14%
18-23	20	0	20	100%	11%
24-29	17	1	18	94%	10%
30-35	15	0	15	100%	9%
36-41	9	1	10	90%	6%
42+	46	0	46	100%	26%
Total	153	21	174	88%	100%

Let's look firstly at the tables on the left. They tell us that, during the 88 games of the current season:

- 64% of teams that have led at the 1st change by any margin have gone on to win. Of the 15 teams that have led by 4 goals or more at quarter-time, 12 of them (or 80%) have gone on to win.
- 74% of teams that have led at the half have gone on to win. Of the 38 teams that have led by 3 goals or more at half-time, 32 of them (or 84%) have gone on to win.
- 88% of teams that have led at the final change have gone on to win. Of the 73 teams that led by a goal or more at three-quarter-time, 67 of them (92%) have gone on to win. The percentage climbs to 95% for teams that led by 2 goals or more. Even teams that have led by only between 1 and 5 points at the final change have gone on to win 9 times out of 13. That's pretty amazing.

The tables on the right, which show the equivalent numbers for season 2006, suggest that this year's results are by no means atypical. Indeed, this season's results are remarkably similar to last year's, with the only notable exception being that there've been far fewer blowout results this year.

So, if you're happy with 80% certainty (and ignoring the quality of the opposition), to feel confident of victory you need your team to lead by:

- 4 goals or more at quarter-time
- 3 goals or more at half-time
- Anything at all (but preferably at least a goal) at three-quarter-time

The Alternative Premierships

In beating the Crows and, in so doing, winning the 2nd, 3rd and 4th quarters, Geelong have now moved to the top of all 4 End of Quarter Premierships, with a percentage above 150 in each. The Roos and West Coast, as you might expect given their ladder positions, are also well placed in each of the End of Quarter Premierships.

Interestingly, no side has now won fewer than four of its 1st quarters. Amongst the teams who have won just the four is Hawthorn who, despite their slow starts, find themselves 4th on the premiership ladder.

End of 1st Quarter Premiership			End of 2nd Quarter Premiership			End of 3rd Quarter Premiership			End of 4th Quarter Premiership		
Team	Pts	%	Team	Pts	%	Team	Pts	%	Team	Pts	%
Geelong	36	172.3	Geelong	34	160.0	Geelong	36	164.9	Geelong	32	151.7
Kangaroos	36	146.3	West Coast	34	150.5	West Coast	36	116.9	West Coast	32	126.0
Essendon	32	131.7	Kangaroos	32	115.8	Kangaroos	32	119.5	Hawthorn	28	112.9
Adelaide	32	119.0	Adelaide	30	115.2	Collingwood	26	102.1	Essendon	28	106.8
West Coast	28	144.0	Western Bulldogs	24	105.5	Hawthorn	24	107.8	Collingwood	28	105.9
Sydney	20	96.7	Sydney	24	103.5	Adelaide	24	106.3	Kangaroos	28	101.0
Carlton	20	94.7	Hawthorn	24	95.7	Sydney	24	104.1	Sydney	24	113.8
Western Bulldogs	18	97.0	Essendon	22	105.5	Western Bulldogs	24	99.9	Adelaide	24	107.0
Collingwood	18	75.4	Collingwood	22	92.8	Brisbane Lions	20	96.1	Western Bulldogs	24	97.7
Fremantle	16	94.5	Fremantle	18	101.5	Fremantle	20	95.4	Port Adelaide	24	96.7
Hawthorn	16	88.8	Brisbane Lions	16	98.4	Port Adelaide	20	95.0	Fremantle	20	99.3
Port Adelaide	16	81.1	Carlton	16	88.0	Essendon	16	101.4	Brisbane Lions	18	93.1
Brisbane Lions	16	80.7	St Kilda	16	85.5	Carlton	16	93.2	Carlton	16	86.2
Melbourne	16	80.4	Port Adelaide	16	80.7	St Kilda	16	86.9	St Kilda	16	85.1
St Kilda	16	78.5	Richmond	16	72.6	Richmond	10	72.3	Melbourne	8	77.0
Richmond	16	77.0	Melbourne	8	71.9	Melbourne	8	71.1	Richmond	2	72.7

As you can see below, the reason that Hawthorn are 4th on the ladder is because they make up for their slow starts by performing exceptionally well in the 3rd and 4th quarters. Indeed, they have the best final quarter record of all the teams, having won 8 of 11 last quarters and having done so with a percentage of just under 130.

In contrast, the Roos' 4th quarter performances must be of some concern to their supporters – they've only managed to win three and draw one of their final terms, ranking them above only Richmond and Carlton based on 4th quarter performances.

During 1st Quarter Premiership			During 2nd Quarter Premiership			During 3rd Quarter Premiership			During 4th Quarter Premiership		
Team	Pts	%	Team	Pts	%	Team	Pts	%	Team	Pts	%
Geelong	36	172.3	West Coast	32	159.1	Geelong	36	176.5	Hawthorn	34	129.9
Kangaroos	36	146.3	Western Bulldogs	30	118.6	Kangaroos	30	128.0	Essendon	32	124.6
Essendon	32	131.7	Collingwood	30	114.6	Port Adelaide	28	133.2	West Coast	30	158.4
Adelaide	32	119.0	St Kilda	30	94.9	Collingwood	28	123.1	Melbourne	28	97.2
West Coast	28	144.0	Geelong	28	147.9	Hawthorn	24	132.4	Sydney	26	150.6
Sydney	20	96.7	Brisbane Lions	24	123.3	Carlton	24	103.5	Geelong	26	117.2
Carlton	20	94.7	Sydney	24	113.4	Brisbane Lions	24	91.5	Fremantle	26	112.0
Western Bulldogs	18	97.0	Adelaide	24	111.1	Sydney	22	105.5	Collingwood	24	120.2
Collingwood	18	75.4	Fremantle	24	110.8	Essendon	20	94.0	Adelaide	24	109.4
Fremantle	16	94.5	Kangaroos	20	91.5	Western Bulldogs	20	88.8	Port Adelaide	22	103.2
Hawthorn	16	88.8	Richmond	20	67.9	Fremantle	20	86.2	St Kilda	18	80.3
Port Adelaide	16	81.1	Hawthorn	16	102.2	West Coast	18	70.4	Western Bulldogs	16	90.8
Brisbane Lions	16	80.7	Carlton	16	80.9	St Kilda	16	89.5	Brisbane Lions	16	83.7
Melbourne	16	80.4	Port Adelaide	14	80.3	Melbourne	16	69.5	Kangaroos	14	68.2
St Kilda	16	78.5	Essendon	12	87.5	Richmond	14	71.6	Richmond	12	73.7
Richmond	16	77.0	Melbourne	8	64.2	Adelaide	12	91.3	Carlton	4	65.6

*_*_*_*_*_*_*_*_*_*

This season is shaping up as being one of the closest for some time, with even St Kilda, in 14th, only 2 wins out of the eight.

Here's to a second half of the season as good – and at least as profitable – as the first.

'til Thursday

Tony

11 June 2007

Appendix

Tipping Model Strategies

Strategy Name	Basis for Tips
Chi Tipping Model (CTM)	Complex statistical model incorporating a range of factors.
Quila Tipping Model (QTM)	Uses an approach similar to that used for the CTM.
Bookies Know Best (BKB)	For each game, tips the TAB Sportsbet favourite. In the case of equal favourites, it tips the true home team or, if there's no true home team, tips the team with the higher ladder position (ties are broken using percentage then for-and-against margin).
Consult The Ladder (CTL)	Tips the team with the higher ladder position (ties are broken using percentage then for-and-against margin). For the first round of the season, use the ladder position at the end of the previous regular season.
Momentum Matters (MMx)	<p>A series of strategies that involve building competition ladders based only on the results of the most recent x rounds of regular season games (drawing on games from the previous season if required).</p> <p>The MM2 strategy considers only the last 2 regular season rounds, the MM4 strategy only the last 4 rounds, and so on. Once a ladder has been built for a strategy, the selected team is that with the superior ladder position (as per CTL above).</p> <p>This year we'll track the performance of MM2, MM4, MM6, MM8, MM11, MM16 and MM22.</p>
No Independent Thought (NIT)	Tips the team that is most popular amongst all other strategies.

Notional Initial Funds

For reasons that are somewhat technical (I'm happy to provide details to anyone who's interested but, broadly, it allows me to describe bets in terms of a common percentage for all Investors and still maintain the same share price for all Investors), I need to calculate what I call "Notional Initial Funds". It's calculated separately for each Fund.

For original Investors, the definition is straightforward:

$$\text{Notional Initial Funds} = \text{Actual Funds Invested}$$

For Investors who join the Fund post Round 1:

$$\text{Notional Initial Funds} = \text{Actual Funds Invested} / \text{Share Price at the time of investing}$$

(in other words, it's the notional amount that would need to have been invested at the start of the season in order to have returned an amount equal to the amount actually invested).

11 June 2007