



MAFL Funds : Season 2007

Where Statistics Meets Leather and Grass

3 June 2007

Season 2007, Number 10.1

In this Edition of the newsletter:

- Results of wagers and tips for Round 10
- The Alternative Premierships

Upsets Galore

<p> Collingwood v Fremantle MCG 1st June, 7:40pm</p> <p>Head-to-Head Col \$1.45 / Fre \$2.62 (Collingwood 62-69%)</p> <p>Line Betting Collingwood -15.5 pts</p> <p>Heritage Fund Bet -</p> <p>Alpha Fund Bet -</p> <p>Beta Fund Bet -</p> <p>Line Fund Bet -</p> <p>Collingwood 15.13 (103) <i>def</i> Fremantle 13.16 (94)</p> <p>Line Betting Fremantle by 6.5pts</p>	<p> Melbourne v Adelaide MCG 2nd June, 2:10pm</p> <p>Head-to-Head Mel \$2.80 / Ade \$1.40 (Adelaide 64-71%)</p> <p>Line Betting Melbourne +15.5 pts</p> <p>Heritage Fund Bet WON 14.90% (15.89%)</p> <p>Alpha Fund Bet -</p> <p>Beta Fund Bet -</p> <p>Line Fund Bet WON 7.01% (7.83%)</p> <p>Melbourne 13.11 (89) <i>def</i> Adelaide 10.12 (72)</p> <p>Line Betting Melbourne by 32.5pts</p>	<p> West Coast v Kangaroos Subiaco 2nd June, 2:10pm</p> <p>Head-to-Head WC \$1.23 / Kan \$3.80 (West Coast 74-81%)</p> <p>Line Betting West Coast -25.5 pts</p> <p>Heritage Fund Bet -</p> <p>Alpha Fund Bet -</p> <p>Beta Fund Bet -</p> <p>Line Fund Bet -</p> <p>West Coast 18.13 (121) <i>def</i> Kangaroos 7.13 (55)</p> <p>Line Betting West Coast by 40.5pts</p>	<p> Sydney v Essendon SCG 2nd June, 7:10pm</p> <p>Head-to-Head Syd \$1.28 / Ess \$3.45 (Sydney 71-78%)</p> <p>Line Betting Sydney -23.5 pts</p> <p>Heritage Fund Bet -</p> <p>Alpha Fund Bet -</p> <p>Beta Fund Bet LOST 1.71% (1.82%)</p> <p>Line Fund Bet -</p> <p>Essendon 11.8 (74) <i>def</i> Sydney 11.7 (73)</p> <p>Line Betting Essendon by 24.5pts</p>
<p> Richmond v Brisbane Lions Telstra Dome 2nd June, 7:10pm</p> <p>Head-to-Head Ric \$1.75 / Bri \$2.00 (Richmond 50-57%)</p> <p>Line Betting Richmond -6.5 pts</p> <p>Heritage Fund Bet -</p> <p>Alpha Fund Bet -</p> <p>Beta Fund Bet -</p> <p>Line Fund Bet -</p> <p>Richmond 10.13 (73) <i>drew with</i> Brisbane 10.13 (73)</p> <p>Line Betting Brisbane by 6.5pts</p>	<p> Port Adelaide v Hawthorn Football Park 3rd June, 12:40pm</p> <p>Head-to-Head PA \$1.75 / Haw \$2.00 (Port Adelaide 50-57%)</p> <p>Line Betting Port Adelaide -6.5 pts</p> <p>Heritage Fund Bet -</p> <p>Alpha Fund Bet -</p> <p>Beta Fund Bet LOST 8.34% (8.89%)</p> <p>Line Fund Bet -</p> <p>Hawthorn 17.7 (109) <i>def</i> Port Adelaide 10.15 (75)</p> <p>Line Betting Hawthorn by 40.5pts</p>	<p> Carlton v Bulldogs MCG 3rd June, 2:10pm</p> <p>Head-to-Head Car \$3.00 / WB \$1.35 (Bulldogs 67-74%)</p> <p>Line Betting Carlton +17.5 pts</p> <p>Heritage Fund Bet WON 17.34% (18.50%)</p> <p>Alpha Fund Bet -</p> <p>Beta Fund Bet -</p> <p>Line Fund Bet WON 7.01% (7.83%)</p> <p>Carlton 21.12 (138) <i>def</i> Bulldogs 19.14 (128)</p> <p>Line Betting Carlton by 27.5pts</p>	<p> St Kilda v Geelong Telstra Dome 3rd June, 5:10pm</p> <p>Head-to-Head StK \$3.50 / Gee \$1.27 (Geelong 71-79%)</p> <p>Line Betting St Kilda +23.5 pts</p> <p>Heritage Fund Bet LOST 6.48% (6.91%)</p> <p>Alpha Fund Bet -</p> <p>Beta Fund Bet -</p> <p>Line Fund Bet -</p> <p>Geelong 19.11 (125) <i>def</i> St Kilda 9.11 (65)</p> <p>Line Betting Geelong by 36.5pts</p>

Dees and Blues Repay the Faith

Finally, the Heritage Model's faith in Melbourne and Carlton has paid off. There can't be too many punters around who can claim to be in front having backed Carlton 6 times this season, but the Heritage Fund can indeed make such a boast as it now has enjoyed a 25.2% ROI from the Blues on the strength of 2 wins and 4 losses.

The Line Fund also continued its resurgence, bagging 2 from 2 this weekend, lifting its season record to 8 and 8 and its share price over the \$1.00 mark for the first time this season.

The Beta Fund, however, continues to struggle, unlucky to lose its small bet on the Swans, perhaps, but simply picking the wrong team with a sizable bet on Port Adelaide up against the Hawks (though, to be fair, Port did lead 41-14 a few minutes into the second term).

Here's the detail:

Results of Round 10 Wagers

Heritage Fund		ROI		110.0%	
	Bet*	Price	Net Return*		
Melbourne	8.28%	\$2.80	14.9%		Won by 17pts
Carlton	8.67%	\$3.00	17.3%		Won by 10pts
St Kilda	6.48%	\$3.50	(6.5%)		Lost by 60pts
Total	23.4%		25.8%		

Beta Fund		ROI		(100.0%)	
	Bet*	Price	Net Return*		
Sydney	1.71%	\$1.28	(1.7%)		Lost by 1pt
Port Adel	8.34%	\$1.75	(8.3%)		Lost by 34pts
Total	10.1%		(10.1%)		

Line Fund		ROI		90.0%	
	Bet*	Price	Net Return*		
Melbourne	7.79%	\$1.90	7.0%		Won by 32.5 pts
Carlton	7.79%	\$1.90	7.0%		Won by 27.5 pts
Total	15.6%		14.0%		

** all bets and net returns are calculated as a percentage of Notional Initial Funds*

On balance, you gotta be happy with that lot.

Here's where it leaves Investors:

Overall Fund Performance						
		Heritage	Alpha	Beta	Line	
Fund Return		+19.50%	+7.77%	(-16.23%)	+3.47%	
Joined [Swapped]	Strategy	Heritage	Alpha	Beta	Line	Overall Return
(Percentage in each Fund)						
Pre-Season	A*	20%	35%	35%	10%	+1.29%
Pre-Season	B	25%	25%	25%	25%	+3.63%
Pre-Season	C	30%	30%	30%	10%	+3.66%
Pre-Season	D	0%	0%	0%	100%	+3.47%
Pre-Season	E	20%	30%	30%	20%	+2.06%
Round 6	A*	20%	35%	35%	10%	+4.21%
Pre-Season [Round 7 & 10]	A ▶ C ▶ A	20%	35%	35%	10%	(-0.05%)

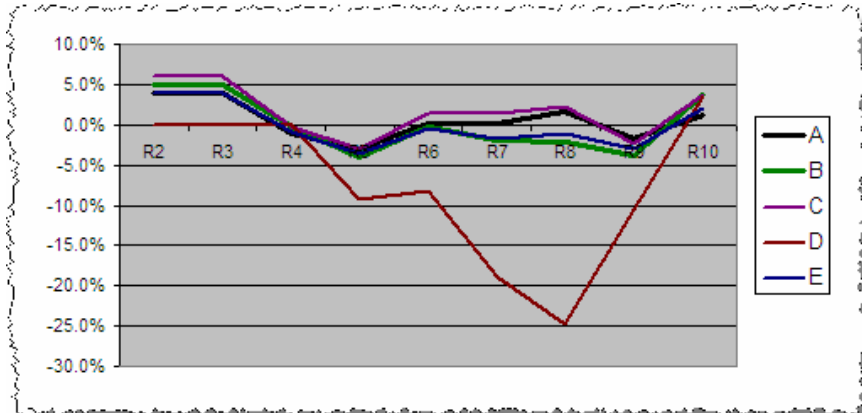
** Recommended portfolio weightings*

Now if we can just remove that nasty red colour under the 'Beta' label.

- 7 bets, 4 winners – profit improvements for all strategies

Here's a new chart, which shows how the return on the various strategies has varied round-by-round.

Round-by-Round Performance of Each Strategy



So, after all that effort, we've all come to about the same place.

And here's how the Fund-by-Fund, team-by-team view now looks:

Fund-by-Fund, Team-by-Team After Round 10

HERITAGE FUND							ALPHA FUND						
	Bets	Win	Loss	% Outlayed	ROI	% RONF		Bets	Win	Loss	% Outlayed	ROI	% RONF
Adelaide	1	1	0	9.8%	180.0%	17.6%	Adelaide	0	0	0	0.0%	0.0%	0.0%
Brisbane Lions	1	1	0	3.7%	145.0%	5.3%	Brisbane Lions	0	0	0	0.0%	0.0%	0.0%
Carlton	6	2	4	33.2%	25.2%	8.4%	Carlton	0	0	0	0.0%	0.0%	0.0%
Collingwood	1	1	0	5.1%	195.0%	9.9%	Collingwood	1	1	0	2.5%	40.0%	1.0%
Essendon	0	0	0	0.0%	0.0%	0.0%	Essendon	0	0	0	0.0%	0.0%	0.0%
Fremantle	0	0	0	0.0%	0.0%	0.0%	Fremantle	1	1	0	2.7%	86.0%	2.3%
Geelong	0	0	0	0.0%	0.0%	0.0%	Geelong	0	0	0	0.0%	0.0%	0.0%
Hawthorn	4	3	1	22.1%	68.6%	15.1%	Hawthorn	1	1	0	1.7%	120.0%	2.0%
Kangaroos	3	2	1	12.9%	73.7%	9.5%	Kangaroos	0	0	0	0.0%	0.0%	0.0%
Melbourne	5	1	4	31.4%	(26.2%)	(8.2%)	Melbourne	1	0	1	2.3%	(100.0%)	(2.3%)
Port Adelaide	0	0	0	0.0%	0.0%	0.0%	Port Adelaide	0	0	0	0.0%	0.0%	0.0%
Richmond	4	0	4	31.5%	(100.0%)	(31.5%)	Richmond	0	0	0	0.0%	0.0%	0.0%
St Kilda	1	0	1	6.5%	(100.0%)	(6.5%)	St Kilda	0	0	0	0.0%	0.0%	0.0%
Sydney	0	0	0	0.0%	0.0%	0.0%	Sydney	1	1	0	7.3%	65.0%	4.8%
West Coast	0	0	0	0.0%	0.0%	0.0%	West Coast	0	0	0	0.0%	0.0%	0.0%
Western Bulldogs	0	0	0	0.0%	0.0%	0.0%	Western Bulldogs	0	0	0	0.0%	0.0%	0.0%
Total	26	11	15	156.1%	12.5%	19.5%	Total	5	4	1	16.5%	47.2%	7.8%

BETA FUND							LINE FUND						
	Bets	Win	Loss	% Outlayed	ROI	% RONF		Bets	Win	Loss	% Outlayed	ROI	% RONF
Adelaide	0	0	0	0.0%	0.0%	0.0%	Adelaide	0	0	0	0.0%	0.0%	0.0%
Brisbane Lions	2	1	1	3.7%	(3.8%)	(0.1%)	Brisbane Lions	0	0	0	0.0%	0.0%	0.0%
Carlton	0	0	0	0.0%	0.0%	0.0%	Carlton	2	2	0	15.6%	90.0%	14.0%
Collingwood	2	1	1	5.4%	(35.4%)	(1.9%)	Collingwood	2	1	1	13.7%	8.2%	1.1%
Essendon	0	0	0	0.0%	0.0%	0.0%	Essendon	1	0	1	5.0%	(100.0%)	(5.0%)
Fremantle	0	0	0	0.0%	0.0%	0.0%	Fremantle	1	0	1	5.9%	(100.0%)	(5.9%)
Geelong	0	0	0	0.0%	0.0%	0.0%	Geelong	0	0	0	0.0%	0.0%	0.0%
Hawthorn	0	0	0	0.0%	0.0%	0.0%	Hawthorn	2	1	1	15.6%	(5.1%)	(0.8%)
Kangaroos	0	0	0	0.0%	0.0%	0.0%	Kangaroos	1	1	0	7.8%	90.0%	7.0%
Melbourne	1	0	1	4.1%	(100.0%)	(4.1%)	Melbourne	3	2	1	23.3%	26.6%	6.2%
Port Adelaide	1	0	1	8.3%	(100.0%)	(8.3%)	Port Adelaide	0	0	0	0.0%	0.0%	0.0%
Richmond	0	0	0	0.0%	0.0%	0.0%	Richmond	1	1	0	7.8%	90.0%	7.0%
St Kilda	0	0	0	0.0%	0.0%	0.0%	St Kilda	1	0	1	7.8%	(100.0%)	(7.8%)
Sydney	1	0	1	1.7%	(100.0%)	(1.7%)	Sydney	0	0	0	0.0%	0.0%	0.0%
West Coast	0	0	0	0.0%	0.0%	0.0%	West Coast	1	0	1	11.2%	(50.0%)	(5.6%)
Western Bulldogs	0	0	0	0.0%	0.0%	0.0%	Western Bulldogs	1	0	1	6.7%	(100.0%)	(6.7%)
Total	7	2	5	23.3%	(69.6%)	(16.2%)	Total	16	8	8	120.4%	2.9%	3.5%

So, after this week's Saints wager, Geelong and Port Adelaide remain as the only teams that none of the Funds have wagered on so far this season.

In contrast, the most backed team is Melbourne who we've financially supported 9 times for 3 wins and 6 losses, then comes Carlton with 8 bets for 4 wins and 4 losses, and then Hawthorn with 7 bets for an impressive 5 bets and 2 losses. Indeed, Hawthorn is responsible for adding 3.7% to Strategy A Investor wealth.

Tough Going For Tipsters

Universally disappointing results for tipsters this weekend, with only CTL, MM8, MM11 and NIT faring better than chance.

Tips from all the Tipping Models
(see Appendix for each Model's strategy)

Tipping									
	Col v Fre	Mel v Ade	WC v Kan	Syd v Ess	Ric v Bri	PA v Haw	Car v WB	StK v Gee	This Rnd
CTM	Col by 10	Ade by 7	WC by 18	Syd by 15	Ric by 5	PA by 12	WB by 10	Gee by 8	3.5
QTM	Col by 18	Ade by 7	WC by 13	Syd by 22	Bri by 20	PA by 13	WB by 7	Gee by 21	3.5
BKB	Col by 15.5	Ade by 15.5	WC by 25.5	Syd by 23.5	Ric by 6.5	PA by 6.5	WB by 17.5	Gee by 23.5	3.5
CTL	Collingwood	Adelaide	West Coast	Sydney	Brisbane	Hawthorn	Western Bulldogs	Geelong	4.5
MM2	Fremantle	Adelaide	Kangaroos	Sydney	Richmond	Hawthorn	Western Bulldogs	Geelong	2.5
MM4	Collingwood	Adelaide	Kangaroos	Sydney	Brisbane	Hawthorn	Western Bulldogs	Geelong	3.5
MM6	Collingwood	Adelaide	Kangaroos	Sydney	Brisbane	Hawthorn	Western Bulldogs	Geelong	3.5
MM8	Collingwood	Adelaide	West Coast	Sydney	Brisbane	Hawthorn	Western Bulldogs	Geelong	4.5
MM11	Collingwood	Adelaide	West Coast	Sydney	Brisbane	Hawthorn	Western Bulldogs	Geelong	4.5
MM16	Fremantle	Adelaide	West Coast	Sydney	Brisbane	Hawthorn	Western Bulldogs	Geelong	3.5
MM22	Fremantle	Adelaide	West Coast	Sydney	Brisbane	Port Adelaide	Western Bulldogs	Geelong	2.5
NIT	Collingwood (8-3)	Adelaide (11-0)	West Coast (8-3)	Sydney (11-0)	Brisbane (8-3)	Hawthorn (7-4)	Western Bulldogs (11-0)	Geelong (11-0)	4.5

Line Betting									
Chi	Fremantle	Melbourne	Kangaroos	Essendon	Brisbane	Port Adelaide	Carlton	St Kilda	5
Quila	Collingwood	Melbourne	Kangaroos	Essendon	Brisbane	Port Adelaide	Carlton	St Kilda	4

(NB: I'll credit all tipsters with ½ a point for the draw).

All of which does relatively little to change the tipster leader board, leaving MM16 one tip ahead of BKB, with Chi still another four tips back.

- Poor tipping all round leaves MM16 atop the table, one ahead of BKB and 5 ahead of Chi

Cumulative Results After Round 10

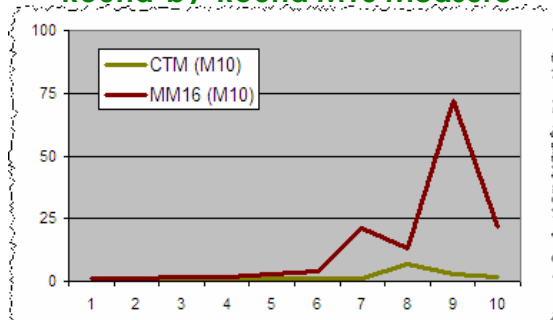
	Cum	% Correct	Av Pred Err
MM16	52.5	65.6%	-
BKB	51.5	64.4%	27.40
CTM	47.5	59.4%	27.78
MM4	45.5	56.9%	-
MM8	45.5	56.9%	-
MM22	44.5	55.6%	-
QTM	43.5	54.4%	28.80
MM6	43.5	54.4%	-
MM11	43.5	54.4%	-
NIT	43.5	54.4%	-
CTL	40.5	50.6%	-
MM2	36.5	45.6%	-

Monkeys Gain Ground

Much hooting and screeching from the primate precinct this weekend as their coin-tossing ways proved more than a match for Chi and MM16.

This week I though I'd show how the M10 measure has tracked across the 10 rounds so far for Chi and for MM16:

Round-by-Round M10 Measure



So, at present, 2 monkeys tipping at random since the start of the season would have a 10% chance of matching Chi's performance; you'd need 22 to have the same chance of matching MM16's performance.

The Alternative Premierships

Geelong remain at the head of the End of 1st, 2nd and 3rd Quarter Premierships, winning all but the 2nd quarter in their game against the Saints. West Coast remains well-placed in all these 'End of' Premierships too.

Meantime, Melbourne led for the first time this season at the main break, three-quarter time and at the final siren, while Richmond also managed to pick up its first premiership points of the season, albeit only 2 in its draw with the Lions.

End of 1st Quarter Premiership			End of 2nd Quarter Premiership			End of 3rd Quarter Premiership			End of 4th Quarter Premiership		
Team	Pts	%	Team	Pts	%	Team	Pts	%	Team	Pts	%
Geelong	36	184.8	Geelong	32	165.4	Geelong	32	171.1	West Coast	32	129.5
Essendon	32	154.9	West Coast	30	147.3	West Coast	32	117.2	Geelong	28	155.0
Kangaroos	32	139.8	Adelaide	28	116.6	Kangaroos	28	117.1	Hawthorn	28	115.3
Adelaide	28	116.3	Kangaroos	28	112.0	Collingwood	26	102.7	Collingwood	28	108.0
West Coast	24	131.0	Sydney	24	104.3	Hawthorn	24	110.1	Adelaide	24	108.5
Sydney	20	103.7	Essendon	22	113.0	Adelaide	24	107.0	Essendon	24	107.3
Collingwood	18	81.9	Collingwood	22	95.2	Sydney	20	103.0	Port Adelaide	24	100.6
Fremantle	16	102.0	Western Bulldogs	20	99.1	Port Adelaide	20	102.6	Kangaroos	24	98.8
Brisbane Lions	16	88.8	Hawthorn	20	94.9	Brisbane Lions	20	102.1	Sydney	20	113.8
Port Adelaide	16	86.9	Fremantle	18	104.6	Western Bulldogs	20	94.5	Western Bulldogs	20	95.4
Carlton	16	86.6	Brisbane Lions	16	106.2	Essendon	16	103.1	Brisbane Lions	18	95.0
St Kilda	16	83.3	St Kilda	16	88.9	Fremantle	16	94.8	Fremantle	16	97.0
Western Bulldogs	14	87.9	Port Adelaide	16	84.4	St Kilda	16	89.1	St Kilda	16	87.0
Hawthorn	12	79.5	Carlton	12	82.0	Carlton	12	86.5	Carlton	12	81.6
Richmond	12	69.7	Richmond	12	68.8	Richmond	10	70.2	Melbourne	4	73.9
Melbourne	12	69.3	Melbourne	4	67.0	Melbourne	4	68.4	Richmond	2	71.8

During 1st Quarter Premiership			During 2nd Quarter Premiership			During 3rd Quarter Premiership			During 4th Quarter Premiership		
Team	Pts	%	Team	Pts	%	Team	Pts	%	Team	Pts	%
Geelong	36	184.8	St Kilda	30	96.5	Geelong	32	185.0	Hawthorn	32	132.3
Essendon	32	154.9	West Coast	28	173.2	Port Adelaide	28	159.2	West Coast	30	173.0
Kangaroos	32	139.8	Western Bulldogs	26	115.6	Kangaroos	26	128.6	Essendon	28	120.2
Adelaide	28	116.3	Collingwood	26	110.7	Hawthorn	24	142.7	Sydney	24	155.4
West Coast	24	131.0	Geelong	24	147.0	Collingwood	24	118.5	Collingwood	24	128.6
Sydney	20	103.7	Brisbane Lions	24	128.0	Brisbane Lions	24	93.3	Adelaide	24	113.9
Collingwood	18	81.9	Adelaide	24	116.9	Carlton	20	95.5	Melbourne	24	92.8
Fremantle	16	102.0	Fremantle	20	108.0	Sydney	18	100.0	Geelong	22	115.2
Brisbane Lions	16	88.8	Sydney	20	105.0	West Coast	18	73.8	Fremantle	22	104.6
Port Adelaide	16	86.9	Richmond	20	67.8	St Kilda	16	89.5	Port Adelaide	18	93.5
Carlton	16	86.6	Hawthorn	16	110.1	Essendon	16	86.4	Western Bulldogs	16	98.3
St Kilda	16	83.3	Kangaroos	16	89.1	Western Bulldogs	16	84.6	St Kilda	16	81.1
Western Bulldogs	14	87.9	Port Adelaide	14	82.1	Fremantle	16	80.3	Richmond	12	75.8
Hawthorn	12	79.5	Essendon	12	86.4	Melbourne	16	71.8	Brisbane Lions	12	75.1
Richmond	12	69.7	Carlton	12	77.4	Richmond	14	72.8	Kangaroos	12	66.3
Melbourne	12	69.3	Melbourne	8	64.8	Adelaide	12	91.0	Carlton	4	66.8

Melbourne, Richmond and Hawthorn are tied as the poorest-starting teams of the competition, having won only 3 of 10 first terms. Hawthorn, though, has more than compensated for this by being the 4th best team in the third quarter and the best team in the final term (they've only lost 2 final terms all season), which has been enough to win them 7 games out of 10.

It's also interesting to note that Port Adelaide have generally performed poorly in the 2nd and the final terms: this week, consistent with this trend, they kicked 4.4 to the Hawks' 12.3 in these two quarters.

The Kangaroos continue to perform poorly in the final term, this week managing only 4 behinds to the Eagles' 8.4, leaving the Roos 2nd last in the During the 4th Quarter Premiership despite being 8th in the Premiership proper. At some point this season, this lack of finish is surely going to hurt them.

'Til Thursday.

Tony

3 June 2007

Appendix

Tipping Model Strategies

Strategy Name	Basis for Tips
Chi Tipping Model (CTM)	Complex statistical model incorporating a range of factors.
Quila Tipping Model (QTM)	Uses an approach similar to that used for the CTM.
Bookies Know Best (BKB)	For each game, tips the TAB Sportsbet favourite. In the case of equal favourites, it tips the true home team or, if there's no true home team, tips the team with the higher ladder position (ties are broken using percentage then for-and-against margin).
Consult The Ladder (CTL)	Tips the team with the higher ladder position (ties are broken using percentage then for-and-against margin). For the first round of the season, use the ladder position at the end of the previous regular season.
Momentum Matters (MMx)	A series of strategies that involve building competition ladders based only on the results of the most recent x rounds of regular season games (drawing on games from the previous season if required). The MM2 strategy considers only the last 2 regular season rounds, the MM4 strategy only the last 4 rounds, and so on. Once a ladder has been built for a strategy, the selected team is that with the superior ladder position (as per CTL above). This year we'll track the performance of MM2, MM4, MM6, MM8, MM11, MM16 and MM22.
No Independent Thought (NIT)	Tips the team that is most popular amongst all other strategies.

Notional Initial Funds

For reasons that are somewhat technical (I'm happy to provide details to anyone who's interested but, broadly, it allows me to describe bets in terms of a common percentage for all Investors and still maintain the same share price for all Investors), I need to calculate what I call "Notional Initial Funds". It's calculated separately for each Fund.

For original Investors, the definition is straightforward:

$$\text{Notional Initial Funds} = \text{Actual Funds Invested}$$

For Investors who join the Fund post Round 1:

$$\text{Notional Initial Funds} = \text{Actual Funds Invested} / \text{Share Price at the time of investing}$$

(in other words, it's the notional amount that would need to have been invested at the start of the season in order to have returned an amount equal to the amount actually invested).

3 June 2007