

Looking at football  
from a different  
point of view

# MAFL 2008

9th June  
Round #11.1 2008

## Round 11 Results

62 Correct		Kangaroos v Geelong (Docklands, 6th June 2008)	
Sportsbet	\$5.75	\$1.12	
	11% - 17%	83% - 89%	
	Kangaroos +32½ pts (\$1.90/\$1.90)		
Heritage	Lost 12.06% (14.04%)		
Alpha	-		
Beta	-		
Chi	-		
Line	-		
Chi	Geelong by 8		
Quila	Geelong by 5		
Shadow	Geelong		
CTL	Geelong		
MARS	Geelong		
MM	Geelong (42-1) (Dissenters: MM2)		
Super MM	Geelong (14-0) (Dissenters: None)		
Uber MM	Kangaroos		
Simplified	Kangaroos		
Result	Geelong 19.13 (127) def Kangaroos 17.12 (114)		

62 Correct		Richmond v Adelaide (MCG, 7th June 2008)	
Sportsbet	\$2.50	\$1.50	
	33% - 40%	60% - 67%	
	Richmond +12½ pts (\$1.90/\$1.90)		
Heritage	Lost 7.59% (8.85%)		
Alpha	-		
Beta	-		
Chi	-		
Line	-		
Chi	Adelaide by 1		
Quila	Adelaide by 5		
Shadow	Adelaide		
CTL	Adelaide		
MARS	Adelaide		
MM	Adelaide (42-1) (Dissenters: MM2)		
Super MM	Adelaide (14-0) (Dissenters: None)		
Uber MM	Richmond		
Simplified	Richmond		
Result	Adelaide 22.14 (146) def Richmond 14.12 (96)		

65 Correct		Essendon v Hawthorn (Docklands, 7th June 2008)	
Sportsbet	\$6.00	\$1.10	
	9% - 17%	83% - 91%	
	Essendon +39½ pts (\$1.90 / \$1.90)		
Heritage	Lost 12.43% (14.48%)		
Alpha	-		
Beta	-		
Chi	-		
Line	-		
Chi	Hawthorn by 17		
Quila	Hawthorn by 16		
Shadow	Hawthorn		
CTL	Hawthorn		
MARS	Hawthorn		
MM	Hawthorn (43-0) (Dissenters: None)		
Super MM	Hawthorn (14-0) (Dissenters: None)		
Uber MM	Hawthorn		
Simplified	Hawthorn		
Result	Hawthorn 19.16 (130) def Essendon 12.7 (79)		

64 Correct		West Coast v Sydney (Subiaco, 7th June 2008)	
Sportsbet	\$4.00	\$1.22	
	18% - 25%	75% - 82%	
	West Coast +23½ pts (\$1.90 / \$1.90)		
Heritage	Lost 7.05% (8.22%)		
Alpha	-		
Beta	-		
Chi	Lost 18.00% (21.48%)		
Line	-		
Chi	West Coast by 2		
Quila	Sydney by 1		
Shadow	Sydney		
CTL	Sydney		
MARS	Sydney		
MM	Sydney (43-0) (Dissenters: None)		
Super MM	Sydney (14-0) (Dissenters: None)		
Uber MM	Sydney		
Simplified	Sydney		
Result	Sydney 12.11 (83) def. West Coast 11.12 (78)		

57 Correct		Bris Lions v Fremantle (Gabba, 8th June 2008)	
Sportsbet	\$1.10	\$6.00	
	83% - 91%	9% - 17%	
	Bris Lions -36½ pts (\$1.90 / \$1.90)		
Heritage	-		
Alpha	-		
Beta	-		
Chi	-		
Line	-		
Chi	Brisbane Lions by 20		
Quila	Brisbane Lions by 20		
Shadow	Brisbane Lions		
CTL	Brisbane Lions		
MARS	Brisbane Lions		
MM	Brisbane Lions (35-8) (Dissenters: MM37-44)		
Super MM	Brisbane Lions (14-0) (Dissenters: None)		
Uber MM	Brisbane Lions		
Simplified	Brisbane Lions		
Result	Brisbane Lions 14.12 (96) def. Fremantle 10.14 (74)		

52 Correct		St Kilda v W Bulldogs (Docklands, 8th June 2008)	
Sportsbet	\$2.60	\$1.45	
	31% - 38%	62% - 69%	
	St Kilda +15½ pts (\$1.90 / \$1.90)		
Heritage	Lost 2.55% (2.97%)		
Alpha	-		
Beta	-		
Chi	-		
Line	Lost 7.79% (8.47%)		
Chi	Western Bulldogs by 1		
Quila	Western Bulldogs by 1		
Shadow	Western Bulldogs		
CTL	Western Bulldogs		
MARS	Western Bulldogs		
MM	Western Bulldogs (32-11) (Dissenters: MM2,17,18,20,21,39-44)		
Super MM	Western Bulldogs (14-0) (Dissenters: None)		
Uber MM	St Kilda		
Simplified	St Kilda		
Result	W Bulldogs 15.16 (106) def. St Kilda 11.13 (79)		

1 Correct		Pt Adelaide v Carlton (Football Park, 8th June 2008)	
Sportsbet	\$1.12	\$5.75	
	83% - 89%	11% - 17%	
	Pt Adelaide -36½ pts (\$1.90/\$1.90)		
Heritage	-		
Alpha	-		
Beta	-		
Chi	-		
Line	-		
Chi	Port Adelaide by 15		
Quila	Port Adelaide by 4		
Shadow	Carlton		
CTL	Port Adelaide		
MARS	Port Adelaide		
MM	Port Adelaide (43-0) (Dissenters: None)		
Super MM	Port Adelaide (14-0) (Dissenters: None)		
Uber MM	Port Adelaide		
Simplified	Port Adelaide		
Result	Carlton 10.15 (75) def. Port Adelaide 8.15 (63)		

65 Correct		Melbourne v Collingwood (MCG, 9th June 2008)	
Sportsbet	\$8.50	\$1.05	
	5% - 12%	88% - 95%	
	Melbourne +46½ pts (\$1.90/\$1.90)		
Heritage	Lost 14.35% (16.71%)		
Alpha	-		
Beta	-		
Chi	-		
Line	-		
Chi	Collingwood by 7		
Quila	Collingwood by 1		
Shadow	Collingwood		
CTL	Collingwood		
MARS	Collingwood		
MM	Collingwood (43-0) (Dissenters: None)		
Super MM	Collingwood (14-0) (Dissenters: None)		
Uber MM	Collingwood		
Simplified	Collingwood		
Result	Collingwood 17.14 (116) def. Melbourne 13.17 (95)		

Round 11 Statistics		
Scoring	Winners	Losers
Goals	128	96
Behinds	111	102
Ave Score	117.9	92.8
Ave Marg	25.1	
Qtrs Won	Winners	Losers
1st	2	6
2nd	4	4
3rd	6	2
4th	5	3
Qtr Leads	Winners	Losers
End of 1st	2	6
End of 2nd	5	3
End 3rd	6	2
Tipping	Tipster	Score
1st	BKB	68
2nd	MARS	66
Last	MM41,43,44	51
Ave Score	6.58 (Std Dev = 0.86)	

## Results in Review

MAFL Funds

Well that just stings.

Eight bets, eight losses – thank you linesmen, thank you ballboys.

My head tells me that, statistically, weekends like the one we just had are inevitable, but that doesn't dilute the bitter aftertaste at all.

Hardest to take was the Eagles' loss to the Swans. To lead for all but the last 80 seconds of the contest is a torture that no gambler should be forced to endure, especially when that lead extends to 6 straight goals at the major break.

This year, it seems, no lead is safe. In this round alone we saw 6 teams come from behind at the end of the first quarter, 3 teams come from behind at the half and 2 come from behind at the final change. Alas, none of them was a team with our money riding on it.

So the sad picture for Investors is now the one you see in the table at right.

There's a lot of catching up to do in the second half of the season.

Investor #	Profit/Loss (%)
001	(42.54%)
002	(70.18%)
003	(33.37%)
004	(33.37%)
005	(41.74%)
006	(33.37%)
007	(33.37%)
008	(33.37%)
009	(33.37%)
010	-
011	-
012	(33.37%)
013	(33.37%)
014	(33.37%)
015	(8.64%)
016	(33.37%)

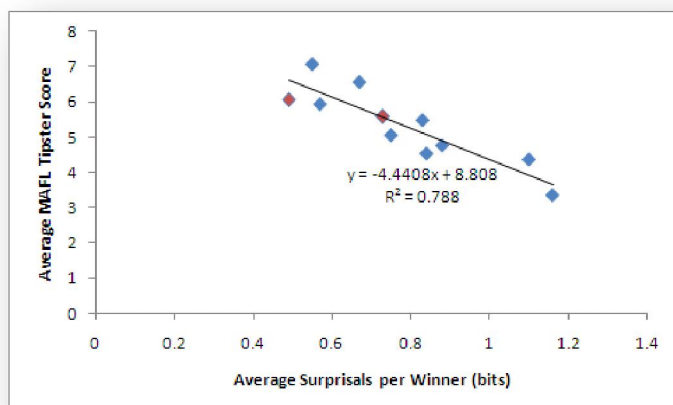
### Surprisal

Based on surprisals, this was the season's sixth "Very Predictable" round and the fifth such round type in the last seven rounds.

Round	Average Surprisal per Winner (bits)	Number of Games included in Average	Number of Victorious Favourites	Ave MAFL Tipster Performance (SD in brackets)
1	0.84 (Predictable)	8	5	4.54 (0.59)
2	0.75 (Very Predictable)	8	7	5.06 (0.77)
3	0.83 (Predictable)	8	6	5.49 (0.77)
4	1.10 (Unpredictable)	8	5	4.37 (0.86)
5	0.73 (Very Predictable)	7	6	5.58 (1.00)
6	0.49 (Very Predictable)	7	7	6.05 (0.61)
7	0.88 (Somewhat Predictable)	8	6	4.77 (0.93)
8	0.55 (Very Predictable)	8	7	7.09 (0.72)
9	1.16 (Unpredictable)	8	4	3.35 (0.87)
10	0.57 (Very Predictable)	8	7	5.95 (0.51)
11	0.67 (Very Predictable)	8	7	6.58 (0.86)

As you'd expect, there's been a strong relationship between Average Surprisal per Winner and Average MAFL Tipster Performance as the chart at right demonstrates.

(The points in red are for the weeks where there were draws and so the surprisal scores are for just 7 games and the maximum MAFL Tipsters score is 7½ from 8).





## Tipping

This was yet another good weekend for tipsters, producing the second-highest average of the season to date, though with an unusually high standard deviation reflecting the fact that a few tipsters did miss out.

The breakdown of tipster performance appears in the table at right.

Shadow was rewarded for his loyalty to the Blues by being the only tipster who scored 8 from 8 this weekend. Exactly three-quarters of the remaining tipsters were, however, just a single tip behind him on 7.

The weekend's worst tipping performances belonged to MM2, the Über Model and the Simplified Über Model, each of whom scored just 4, dropping them all back into the pack of tipsters.

In overall tipping BKB continues to lead and is now on 68 from 88 (77%) followed by MARS on 66 from 88 (75%), Chi on 65 from 88 (74%), and then Quila and CTL both on 64 from 88 (73%).

Running totals for all tipsters appear in pictorial form in Appendix 1.

Score	# Tipsters
8	1
7	48
6	7
5	6
4	3

## Mean and Median Absolute Prediction Errors

The average margin of victory in Round 11 was just over 25 points. Generally, given the conservative nature of Chi's and Quila's tipped margins, low average victory margins mean small absolute prediction errors for them, and this was indeed the case this weekend.

Chi's average absolute error was just 20.5 points and Quila's just 19.5 points, both eclipsing BKB's which was 23.4 points.

For the season to date:

- Chi's mean absolute prediction error is 30.08 points; his median absolute prediction error is 26 points
- Quila's mean absolute prediction error is 30.47 points; her median absolute prediction error is 26 points
- BKB's mean absolute prediction error is 28.57 points; his median absolute prediction error is 21.5 points

## Good Bets and Bad Bets

During the weekend's carnage, between bouts of gnashing and wailing, I got to pondering the question of whether or not it's possible to judge the quality of an individual bet. In other words is it possible to state with any objectivity that Bet A was a good bet and Bet B a bad one?

In the simple case where each bet's probability of success is known it's easy to make such a good/bad assessment. One reasonable and fairly intuitive approach is to proclaim any bet with a positive expectation as a 'good' bet and any bet with a negative expectation a 'bad' bet. So, for example, if I'm offered 5/1 odds on the toss of a fair coin, that would be a 'good' bet, whereas being offered even money on rolling a 6 with a fair die would be a 'bad' bet, regardless of the outcome in either case.

But, what if – as is the case in the overwhelming majority of instances – the true underlying probabilities are unknown? How might we use the actual result as an indicator of whether or not a bet was good or bad?

You could, of course, equate the quality of a bet directly with its outcome, deeming all successful bets 'good' and all unsuccessful ones 'bad'. Whilst this approach undoubtedly has simplicity on its side, it is surely deficient in that it precludes the existence of 'good' but unprofitable and of 'bad' but profitable bets. Taking my earlier example of obtaining 5/1 odds on the toss of a fair coin, I would end up declaring this bet a 'bad' one about 50% of the time (ie whenever I lost the bet).

Dwelling on this example for a moment suggests a variant of the 'good equals profitable' approach that works where the true probabilities aren't known in advance. It requires, however, that we consider groups of bets and not individual bets and it is as follows: provided we have a large enough sample of bets, in aggregate those bets were 'good' if they made money and 'bad' if they didn't.

The 'large enough' requirement ensures that we remove the confounding influence of random fluctuations on our assessment; having 'enough' bets allows us to make a reasonable post hoc estimate of the true aggregate probability of the bets concerned. 'Good' bets, on average and in aggregate, make money; 'bad' bets lose money. Adopting this approach would, for example, prevent us from deeming a large enough series of 5/1 bets on the toss of a fair coin as 'bad' bets, which would seem to be a good thing.

There's hardly a Nobel prize in that suggestion though is there? Boldly, I'm declaring, you can decide whether a pile of bets was 'good' or 'bad' depending on the impact they have on your wallet. Whilst this is probably the only way to truly and objectively make such an assessment, it still leaves us none the wiser about the whether a particular bet might be classified as 'good' or as 'bad'.

Let me offer a tentative suggestion then. A bet that's decided by 3 goals or less is a bet that could readily in most instances have gone the other way. Let's call that a 'marginal bet' and contrast it with a 'comprehensive bet', which is one where the victory margin (adjusted by the amount of any handicap if the bet in question is a Line bet) was more than 3 goals. Sure, 3 goals is a bit arbitrary, but it is approximately the standard deviation of the margin of all games if you (equally arbitrarily) cap the maximum margin at 75 points.

If I employ the 3-goal rule, there are four bet outcomes:

- Comprehensive wins: successful bets where the victory margin, adjusted for handicap if it was a Line Bet, was more than 18 points
- Marginal losses: unsuccessful bets where the victory margin, adjusted for handicap if it was a Line Bet, was less than 18 points
- Comprehensive losses: unsuccessful bets where the victory margin, adjusted for handicap if it was a Line Bet, was more than 18 points
- Marginal wins: successful bets where the victory margin, adjusted for handicap if it was a Line Bet, was less than 18 points

Using this classification system, the performance of the 5 funds breaks down as follows:

Fund	Comprehensive Wins	Marginal Wins	Marginal Losses	Comprehensive Losses
Heritage (-70.2% from 30 bets)	+101.2% (4 bets)	+24.6% (2 bets) <i>Impact if results reversed -36.7%</i>	-46.3% (6 bets) <i>Impact if results reversed +205.4%</i>	-149.6% (18 bets)
Alpha (-12.2% from 3 bets)	+2.2% (1 bet)	-	-6.9% (1 bet) <i>Impact if result reversed +10.2%</i>	-7.5% (1 bet)
Beta (-5.1% from 4 bets)	+2.2% (1 bet)	+0.4% (1 bet) <i>Impact if result reversed -1.4%</i>	-	-7.6% (2 bets)
Chi (-34.2% from 10 bets)	+4.9% (4 bets)	+1.5% (1 bet) <i>Impact if result reversed -4.5%</i>	-30.5% (4 bets) <i>Impact if results reversed +91.5%</i>	-10.2% (1 bet)
Line (-24.9% from 7 bets)	+14.0% (2 bets)	-	-39.0% (5 bets) <i>Impact if results reversed +74.0%</i>	-

So, for example, the Heritage Fund, which has currently lost 70% of its initial value across 30 bets has made 101.2% from 4 bets that can be classified as Comprehensive Wins, has made 24.6% from 2 bets that can be classified as Marginal Wins, has lost 46.3% from 6 bets that can be classified as Marginal Losses, and has lost 149.6% from 18 bets that can be classified as Comprehensive Losses.

Were we to reverse all the Marginal results then the Heritage Fund would be 36.7% worse off from swapping the Marginal Wins to Losses but a staggering 205.4% better off from swapping the Marginal Losses to Wins. Lady Luck has truly not been kind to the Heritage Fund this year. Adding to this diagnosis, a closer look reveals that 4 of the Heritage Fund's 6 Marginal Losses have been by 6 points or fewer.

The Chi and Line Funds have also suffered mightily from a preponderance of Marginal Losses over Marginal Wins. A reversal of Marginal Wins and Losses would see the Chi Fund increase by 87% and the Line Fund by 74%. Undertaking the same reversal for the Alpha Fund would lift its value by 10.2% and, for the Beta Fund would drop its value by 1.4%.

On any fair assessment I think you'd have to say that Investors have had poor luck so far this season and that many of the Funds' bets, whilst unprofitable, have not necessarily been bad. (Though that's not to shy away from the fact that some of them have been stinkers ...)



## Team Quarter-by-Quarter Analysis

Here are the teams' quarter-by-quarter performance details.

### RESULT AT END OF EACH QUARTER BY TEAM

	Quarter 1							Quarter 2							Quarter 3							Quarter 4						
	R	W	D	L	PF	PA	%	R	W	D	L	PF	PA	%	R	W	D	L	PF	PA	%	R	W	D	L	PF	PA	%
<i>Adelaide</i>	14	3	2	6	236	239	98.7	8	6	0	5	483	438	110.3	5	8	0	3	822	670	122.7	4	8	0	3	1134	938	120.9
<i>Brisbane Lions</i>	5	7	0	4	265	245	108.2	7	6	0	5	597	473	126.2	8	5	0	6	917	774	118.5	7	7	0	4	1191	1057	112.7
<i>Carlton</i>	6	6	1	4	262	261	100.4	9	6	0	5	549	528	104.0	13	4	0	7	751	833	90.2	10	5	0	6	1043	1134	92.0
<i>Collingwood</i>	10	5	0	6	283	261	108.4	1	8	0	3	638	502	127.1	1	9	0	2	960	732	131.1	6	7	0	4	1289	1027	125.5
<i>Essendon</i>	16	2	0	9	180	328	54.9	15	3	0	8	461	695	66.3	15	2	0	9	756	1025	73.8	14	2	0	9	955	1371	69.7
<i>Fremantle</i>	13	4	0	7	250	233	107.3	12	4	0	7	479	544	88.1	7	6	0	5	765	772	99.1	15	1	0	10	962	1139	84.5
<i>Geelong</i>	7	6	0	5	278	247	112.6	3	8	0	3	591	503	117.5	2	9	0	2	915	723	126.6	2	10	0	1	1218	955	127.5
<i>Hawthorn</i>	8	6	0	5	258	255	101.2	6	7	0	4	555	474	117.1	3	9	0	2	927	758	122.3	1	10	0	1	1290	969	133.1
<i>Kangaroos</i>	4	6	2	3	278	232	119.8	14	3	0	8	507	581	87.3	10	5	0	6	819	854	95.9	8	5	1	5	1071	1114	96.1
<i>Melbourne</i>	15	2	0	9	176	317	55.5	16	1	0	10	351	676	51.9	16	0	0	11	535	1048	51.0	16	1	0	10	846	1397	60.6
<i>Port Adelaide</i>	9	5	1	5	301	247	121.9	5	7	0	4	608	483	125.9	9	5	0	6	852	781	109.1	11	4	0	7	1087	1091	99.6
<i>Richmond</i>	12	4	1	6	259	310	83.5	10	5	0	6	526	584	90.1	11	5	0	6	784	930	84.3	12	3	1	7	1073	1203	89.2
<i>St Kilda</i>	1	8	0	3	296	211	140.3	11	4	1	6	525	512	102.5	12	4	0	7	739	797	92.7	9	5	0	6	1048	1071	97.9
<i>Sydney</i>	2	8	0	3	279	211	132.2	4	7	1	3	531	416	127.6	6	6	0	5	791	586	135.0	5	7	1	3	1090	816	133.6
<i>West Coast</i>	11	5	0	6	225	248	90.7	13	4	0	7	442	566	78.1	14	3	0	8	627	876	71.6	13	2	0	9	850	1168	72.8
<i>Western Bulldogs</i>	3	7	1	3	295	276	106.9	2	8	0	3	649	517	125.5	4	8	0	3	995	796	125.0	3	9	1	1	1352	1049	128.9

### QUARTERS WON, DRAWN & LOST BY TEAM

	Quarter 1							Quarter 2							Quarter 3							Quarter 4						
	R	W	D	L	PF	PA	%	R	W	D	L	PF	PA	%	R	W	D	L	PF	PA	%	R	W	D	L	PF	PA	%
<i>Adelaide</i>	14	3	2	6	236	239	98.7	4	8	0	3	247	199	124.1	4	6	2	3	339	232	146.1	6	6	0	5	312	268	116.4
<i>Brisbane Lions</i>	5	7	0	4	265	245	108.2	2	8	0	3	332	228	145.6	9	5	0	6	320	301	106.3	15	2	1	8	274	283	96.8
<i>Carlton</i>	6	6	1	4	262	261	100.4	10	4	0	7	287	267	107.5	14	4	0	7	202	305	66.2	12	4	1	6	292	301	97.0
<i>Collingwood</i>	10	5	0	6	283	261	108.4	1	9	0	2	355	241	147.3	5	7	0	4	322	230	140.0	7	6	0	5	329	295	111.5
<i>Essendon</i>	16	2	0	9	180	328	54.9	11	4	0	7	281	367	76.6	12	4	0	7	295	330	89.4	14	3	0	8	199	346	57.5
<i>Fremantle</i>	13	4	0	7	250	233	107.3	12	4	0	7	229	311	73.6	6	7	0	4	286	228	125.4	16	2	0	9	197	367	53.7
<i>Geelong</i>	7	6	0	5	278	247	112.6	5	8	0	3	313	256	122.3	2	8	0	3	324	220	147.3	3	7	1	3	303	232	130.6
<i>Hawthorn</i>	8	6	0	5	258	255	101.2	3	8	0	3	297	219	135.6	7	6	0	5	372	284	131.0	1	10	0	1	363	211	172.0
<i>Kangaroos</i>	4	6	2	3	278	232	119.8	15	3	0	8	229	349	65.6	3	8	0	3	312	273	114.3	13	4	0	7	252	260	96.9
<i>Melbourne</i>	15	2	0	9	176	317	55.5	16	1	0	10	175	359	48.7	16	1	0	10	184	372	49.5	9	5	0	6	311	349	89.1
<i>Port Adelaide</i>	9	5	1	5	301	247	121.9	7	7	0	4	307	236	130.1	10	5	0	6	244	298	81.9	11	5	0	6	235	310	75.8
<i>Richmond</i>	12	4	1	6	259	310	83.5	8	5	1	5	267	274	97.4	11	5	0	6	258	346	74.6	8	5	0	6	289	273	105.9
<i>St Kilda</i>	1	8	0	3	296	211	140.3	13	3	0	8	229	301	76.1	13	4	0	7	214	285	75.1	5	7	0	4	309	274	112.8
<i>Sydney</i>	2	8	0	3	279	211	132.2	9	5	0	6	252	205	122.9	9	5	0	6	260	170	152.9	4	7	1	3	299	230	130.0
<i>West Coast</i>	11	5	0	6	225	248	90.7	14	3	0	8	217	318	68.2	15	2	2	7	185	310	59.7	10	5	0	6	223	292	76.4
<i>Western Bulldogs</i>	3	7	1	3	295	276	106.9	6	7	1	3	354	241	146.9	8	6	0	5	346	279	124.0	2	8	0	3	357	253	141.1

Hawthorn won yet another 4<sup>th</sup> quarter on the weekend maintaining their near-perfect record in that quarter and building an astonishing 172 percentage for that term. The Bulldogs retain second spot for this quarter and Geelong retain third, each winning the final quarters of their respective games too.

Ironically, Fremantle, who failed to lead at the final change for the first time in 5 weeks, won their final term against the Lions but still went down by 22 points.

On the Overall table (see right), in winning all four quarter in their game against the Dons, Hawthorn have leapt from 4<sup>th</sup> to 1<sup>st</sup>, relegating the Cats to 2<sup>nd</sup> and last week's leaders, the Bulldogs, to 3<sup>rd</sup>.

The correlation between:

- overall performance and competition points is +0.93
- 1<sup>st</sup> quarter performance and competition points is +0.60
- 2<sup>nd</sup> quarter performance and competition points is +0.76
- 3<sup>rd</sup> quarter performance and competition points is +0.61
- 4<sup>th</sup> quarter performance and competition points is +0.71

This year, it's all about the 2<sup>nd</sup> and the 4<sup>th</sup> quarters.

	Total Quarters Won				
	R	W	D	L	Pts
<i>Adelaide</i>	6	23	4	17	100
<i>Brisbane Lions</i>	7	22	1	21	90
<i>Carlton</i>	12	18	2	24	76
<i>Collingwood</i>	5	27	0	17	108
<i>Essendon</i>	15	13	0	31	52
<i>Fremantle</i>	13	17	0	27	68
<i>Geelong</i>	2	29	1	14	118
<i>Hawthorn</i>	1	30	0	14	120
<i>Kangaroos</i>	9	21	2	21	88
<i>Melbourne</i>	16	9	0	35	36
<i>Port Adelaide</i>	7	22	1	21	90
<i>Richmond</i>	11	19	2	23	80
<i>St Kilda</i>	9	22	0	22	88
<i>Sydney</i>	4	28	1	15	114
<i>West Coast</i>	14	15	2	27	64
<i>Western Bulldogs</i>	3	28	2	14	116

## Team Ratings Update

With most of the favourites winning this weekend and no margin of victory exceeding 51 points, the highest ratings point increase was only 3.7 points and was earned by Adelaide for their 50-point victory over the Tigers.

Next best was the 2.9 points earned by Hawthorn for their 51-point victory over the Dons, then 2.8 points which was earned by Carlton for their upset victory by 12 points away to Port. The only other change greater than 2 points was the Bulldogs' 2.3 point increase earned by beating the Saints by 27 points.

Two winning teams – Collingwood and Sydney – suffered ratings point decreases as the margins of their respective victories were insufficient given their ratings point superiority.

Here's how the ratings now look:

Team	Initial	Δ R1	Δ R2	Δ R3	Δ R4	Δ R5	Δ R6	Δ R7	Δ R8	Δ R9	Δ R10	Δ R11	End R11
Geelong	1,027.4	+0.3	+5.4	+0.3	+2.7	+3.0	-1.4	+0.9	+1.1	-7.5	+3.0	+0.1	1,035.2
Sydney	1,010.7	-0.3	+5.4	+1.2	+4.4	-3.0	-0.4	-2.5	+4.6	+0.9	+5.0	-0.9	1,025.1
Hawthorn	1,002.9	+5.5	+1.4	+1.4	+3.8	+0.8	-0.1	+5.0	-0.2	-0.2	-3.7	+2.9	1,019.5
Collingwood	1,004.0	+2.2	-0.3	+3.4	-3.5	-1.1	+5.1	-5.0	+0.9	+7.5	+5.3	-0.1	1,018.2
Adelaide	1,008.4	-0.8	+6.0	-0.1	-3.8	+0.8	+1.7	+2.4	+4.2	-5.5	-1.5	+3.7	1,015.4
Western Bulldogs	988.4	+0.8	+6.3	+3.5	+2.7	-0.8	+4.6	+2.5	+0.0	-0.8	+3.7	+2.3	1,013.3
Brisbane Lions	999.6	-1.0	+0.3	-1.2	+2.3	-0.8	+3.1	-0.9	+2.4	+3.6	+2.4	+1.1	1,010.9
Port Adelaide	1,007.4	-0.3	-5.4	+0.1	-2.3	+2.4	+1.7	+4.8	+0.2	-0.9	+2.3	-2.8	1,007.2
Kangaroos	1,000.7	-5.4	+3.7	-1.4	+3.6	+1.1	+0.4	-2.4	-0.0	+0.8	-2.4	-0.1	998.6
St Kilda	1,001.0	+0.3	+2.3	-3.5	-2.7	+2.7	-1.7	-0.3	-0.9	-3.6	+5.0	-2.3	996.3
Fremantle	1,004.0	-2.2	-1.4	+1.6	-6.5	-0.8	+1.4	-1.6	+0.0	-1.4	-2.3	-1.1	989.7
West Coast	1,006.6	+1.0	-6.0	-1.6	-4.4	-2.4	-4.6	-4.2	+0.0	+5.5	-5.3	+0.9	985.6
Richmond	986.3	+2.6	-3.7	-3.4	+6.5	+0.8	+0.1	+0.3	-1.1	+3.0	-5.0	-3.7	982.8
Carlton	975.2	-2.6	-2.3	-0.5	+3.5	+3.2	-1.7	+4.2	-2.4	+1.4	-3.0	+2.8	977.8
Essendon	990.0	+5.4	-5.4	+0.5	-2.7	-2.7	-5.1	-4.8	-4.6	-3.0	+1.5	-2.9	966.5
Melbourne	987.2	-5.5	-6.3	-0.3	-3.6	-3.2	-3.1	+1.6	-4.2	+0.2	-5.0	+0.1	957.9

After losses for the teams ranked 9<sup>th</sup> through 11<sup>th</sup> on MARS, Port Adelaide remains in 8<sup>th</sup> and still with an 8½ ratings point margin to the Roos in 9<sup>th</sup>. Next weekend Port play Geelong at Kardinia and the Roos take on Freo at Subiaco, so there's some prospect for a narrowing of the gap.

Team	Initial	R1	R2	R3	R4	R5	R6	R7	R8	R9	R10	R11
Geelong	1	1	1	1	1	1	1	1	1	1	1	1
Sydney	2	2	2	2	2	2	2	3	3	2	2	2
Hawthorn	8	3	4	4	3	3	3	2	2	3	4	3
Collingwood	6	7	5	5	5	5	5	7	7	5	3	4
Adelaide	3	5	3	3	4	4	4	4	4	4	5	5
Western Bulldogs	13	13	12	10	6	8	6	6	6	8	6	6
Brisbane Lions	11	10	11	11	8	10	9	8	8	7	8	7
Port Adelaide	4	6	7	7	9	7	7	5	5	6	7	8
Kangaroos	10	12	10	12	7	6	8	9	9	9	9	9
St Kilda	9	9	6	8	10	9	10	10	10	10	10	10
Fremantle	7	8	9	6	12	11	11	11	11	11	11	11
Richmond	15	14	14	14	13	13	12	12	12	12	12	13
West Coast	5	4	8	9	11	12	13	13	13	13	13	12
Carlton	16	16	16	16	15	15	15	14	14	14	14	14
Essendon	12	11	13	13	14	14	14	15	15	15	15	15
Melbourne	14	15	15	15	16	16	16	16	16	16	16	16

The MARS Top 8 has now contained the same teams for the past 5 weeks and the only difference between the competition Top 8 and the MARS Top 8 continues to be Port's inclusion in the MARS Top 8 at the expense of the Roos.



Speaking of the competition ladder, here's how it now looks:

Team	Pts	%	GF	BF	PF	Acc %	Rank	GA	BA	PA	1	2	3	4	5	6	7	8	9	10	11
Hawthorn	40	133.1	190	150	1,290	55.9%	5	142	117	969	W	W	W	W	W	W	W	W	W	L	W
Geelong	40	127.5	177	156	1,218	53.2%	11	138	127	955	W	W	W	W	W	W	W	W	L	W	W
Western Bulldogs	38	128.9	201	146	1,352	57.9%	3	155	119	1,049	W	W	W	W	D	W	W	W	L	W	W
Adelaide	32	120.9	162	162	1,134	50.0%	13	136	122	938	L	W	W	L	W	W	W	W	L	W	W
Sydney	30	133.6	159	136	1,090	53.9%	9	115	126	816	L	W	W	W	L	D	L	W	W	W	W
Collingwood	28	125.5	191	143	1,289	57.2%	4	150	127	1,027	W	L	W	L	L	W	L	W	W	W	W
Brisbane Lions	28	112.7	170	171	1,191	49.9%	14	154	133	1,057	L	W	L	W	L	W	L	W	W	W	W
Kangaroos	22	96.1	157	129	1,071	54.9%	7	161	148	1,114	L	W	L	W	W	D	L	W	W	L	L
St Kilda	20	97.9	153	130	1,048	54.1%	8	159	117	1,071	W	W	L	L	W	L	W	L	L	W	L
Carlton	20	92.0	152	131	1,043	53.7%	10	166	138	1,134	L	L	L	W	W	L	W	L	W	L	W
Port Adelaide	16	99.6	160	127	1,087	55.7%	6	160	131	1,091	L	L	L	L	W	W	W	L	L	W	L
Richmond	14	89.2	160	113	1,073	58.6%	1	176	147	1,203	W	L	L	W	D	L	L	L	W	L	L
West Coast	8	72.8	121	124	850	49.4%	15	173	130	1,168	W	L	L	L	L	L	L	L	W	L	L
Essendon	8	69.7	142	103	955	58.0%	2	201	165	1,371	W	L	W	L	L	L	L	L	L	L	L
Fremantle	4	84.5	138	134	962	50.7%	12	165	149	1,139	L	L	W	L	L	L	L	L	L	L	L
Melbourne	4	60.6	120	126	846	48.8%	16	202	185	1,397	L	L	L	L	L	W	L	L	L	L	L

\*~\*~\*~\*~\*~\*~\*~\*~\*~\*~\*~\*~\*~\*~\*~\*

Enough already of this week. Bring on Round 12.  
 (This week I felt like there was an elephant in the way too ...)

2. A 3-kg object is released from rest at a height of 5m on a curved frictionless ramp. At the foot of the ramp is a spring of force constant  $k = 100 \text{ N/m}$ . The object slides down the ramp and into the spring, compressing it a distance  $x$  before coming to rest.

10 (a) Find  $x$ .  
 5 (b) Does the object continue to move after it comes to rest? If yes, how high will it go up the slope before it comes to rest?

$U = 3(9.8)(5) = 147.15$   
 $U_s = \frac{1}{2}(100)x^2 = 50x^2 \dots?$   
 NO. there is an elephant in the way.

(Again with thanks to Denis)

'til Thursday,  
 Tony  
 9 June 2008

### Appendix 1 : Cumulative Tipping Performance – All Tipsters

